



Washington State Field Operations Guide (WAFOG)

May 2026

Name: _____

Phone: _____

Email: _____

If found, please return to the person above

About this Guide

Points of Contact for this Guide

Agency:	Washington Emergency Management Division
Name:	George Long
Title:	Statewide Interoperability Coordinator (SWIC)
Address:	Camp Murray, WA 98430
Office:	253 512-7134
E-Mail:	George.Long@mil.wa.gov
Agency:	Washington Emergency Management Division
Name:	Jonathan Brock
Title:	Deputy State 911 Coordinator
Address:	Camp Murray, WA 98430
Office:	253 512-7081
E-Mail:	Jonathan.Brock@mil.wa.gov

The purpose of the Washington Field Operations Guide (WAFOG) is to increase efficiency in establishing interoperable communications during incidents, create a consistent knowledge base of interoperable communications frequencies and networks, and provide a helpful tool for pre-planning and interoperable communications training and exercises.

Please send updates, corrections, or comments about the WAFOG in word format to the point of contact (POC) listed above.

Table of Contents

About this Guide	2
Points of Contact for this Guide	2
Table of Contents	3
Common Responsibilities of All Deployed Responders	5
General Rules of Use for Communication Equipment or Channels	5
Interoperable Communications	6
Common Issues	6
System User Responsibilities	6
Prioritization and Shared Use of Regional Interoperability Assets	6
ICS Communications Unit Organization	8
ICS Personnel Responsibilities	8
Communication Unit Leader Position Checklist	9
General Rules of Use for Interoperability Assets	11
Resource Management (Equipment and Personnel)	12
Request	12
Mobilization	12
Staging	12
Assignment/Deployment	12
Deactivation/Demobilization	12
Request to use Communication Resources	13
Washington State Regional Interoperability Assets	13
Shared Systems	13
Gateways	14
Repeaters	14
Radio Cache	15
Data Communications	15
Networks/Connections	16
Devices/Sensors	16
Applications	16
Mobile Communications Units (MCU)	16
Auxiliary Communications (AUXCOMM)	17
10th Civil Support Team (WA)	17
Washington State Shared Systems (All Regions 1 thru 9)	19
Washington State Interoperable Channels	20
VHF Interoperable Channels	21
Search and Rescue	21
Washington Weather Radio (Rx ONLY!)	21
800 MHz Interoperable Channels	22
700 MHz Interoperable Channels (Narrowband Digital)	22
Washington State Department of Corrections	24
Washington State Department of Fish and Wildlife (DFW)	25
Washington State Department of Natural Resources	26

Washington State Department of Transportation	30
Washington State Patrol	32
Dispatch Service Agreements	32
Washington State Asset Location Maps (All Regions 1 thru 9)	39
Washington State CEMNET	39
Washington State Counties and Regions	41
Adams County	41
Asotin County	42
Benton County	43
Clallam County	44
Clark County	46
Columbia County	47
Cowlitz County	49
Chelan and Douglas County	49
Ferry County	51
Franklin County	51
Garfield County	52
Grant County	52
Grays Harbor County	53
Island County	54
Jefferson County	56
King County	57
Kitsap County	60
Kittitas County	62
Klickitat County	63
Lewis County	65
Lincoln County	66
Mason County	68
Okanogan County	70
Pacific County	71
Pend Oreille County	73
Pierce County	75
San Juan County	76
Skagit County	77
Skamania County	79
Snohomish County	81
Spokane County	84
Stevens County	85
Thurston County	86
Wahkiakum County	87
Walla Walla County	89
Whatcom County	92
Whitman County	94
Yakima County	95
Resources and Links	97

Common Responsibilities of All Deployed Responders

- Be prepared to deploy – have Go kit(s) ready
- Receive assignments – DO NOT self-deploy
 - Reporting location, time, and travel route
 - Instructions for communication while enroute
- Description of type and severity of incident
- Monitor incident status while enroute
- Start an ICS 214 to document activities
- Upon arrival, check in at correct location
- Receive briefing from immediate supervisor
- Gather information on current incident status
- Copy of IAP, face-to-face, ICS 201
- Document current situation if necessary
- Document significant activities on ICS 214
- Maintain asset accountability
- Brief, assign and manage subordinates, if any
- Work safely – ensure safety
- Participate in planning process if appropriate
- Keep systems operational – verify!
- Brief replacement prior to shift change
- Demobilize as directed – when and how

General Rules of Use for Communication Equipment or Channels

- Shall only be used for official business or emergency communications
- Shall be consistent with Federal Communications Commission (FCC) or National Telecommunications and Information (NTIA) Rules
- Use during a Type 3, 2, or 1 incident shall be authorized by the COML of the incident
- Verify that the interoperability channel is clear before transmitting to avoid interfering with the communications of another user
- Follow Rules and Guidelines of interoperable channels (i.e. Line A power levels, appropriate use, etc.)
- Only users actively participating in the incident or authorized by a COML or COMC should monitor or transmit on a given talkgroup
- Scanning across multiple channels to be avoided when using interoperable communications
- All voice radio communications are to be brief and concise
- No use of nicknames, slang, or Citizens Band (CB) type handles shall be used on any interoperable channels

Interoperable Communications

Common Issues

- Incident is using radio channels in more than one band (VHF, UHF, and/or 700/800 MHz)
- Incident using different radio bands via console or gateway patches
- Unable to communicate critical information due to radio congestion
- Unfamiliar with radio system(s) or assigned radio functionality
- Instructions and assignments not clear
- Have no or inadequate communication with your crew members or supervisor
- Dispatch to dispatch channel patching
- Inadequate number of tactical channels available or assigned
- Multiple conversations on the same talk group or channel
- Lack of sufficient coverage areas for existing systems
- High level of background noise that makes communications difficult
- Potential for uncoordinated multiple radio gateways in an area that would interfere with each other
- Multiple agencies performing individual radio programming at the incident
- Non-standardized use of plain language and continuing use of 10 codes
- Responding agencies have not identified a single Communications Unit Leader (COML) for the incident
- Some radio equipment and systems do not provide dependable coverage inside buildings

System User Responsibilities

Agencies will retain the following rights and responsibilities:

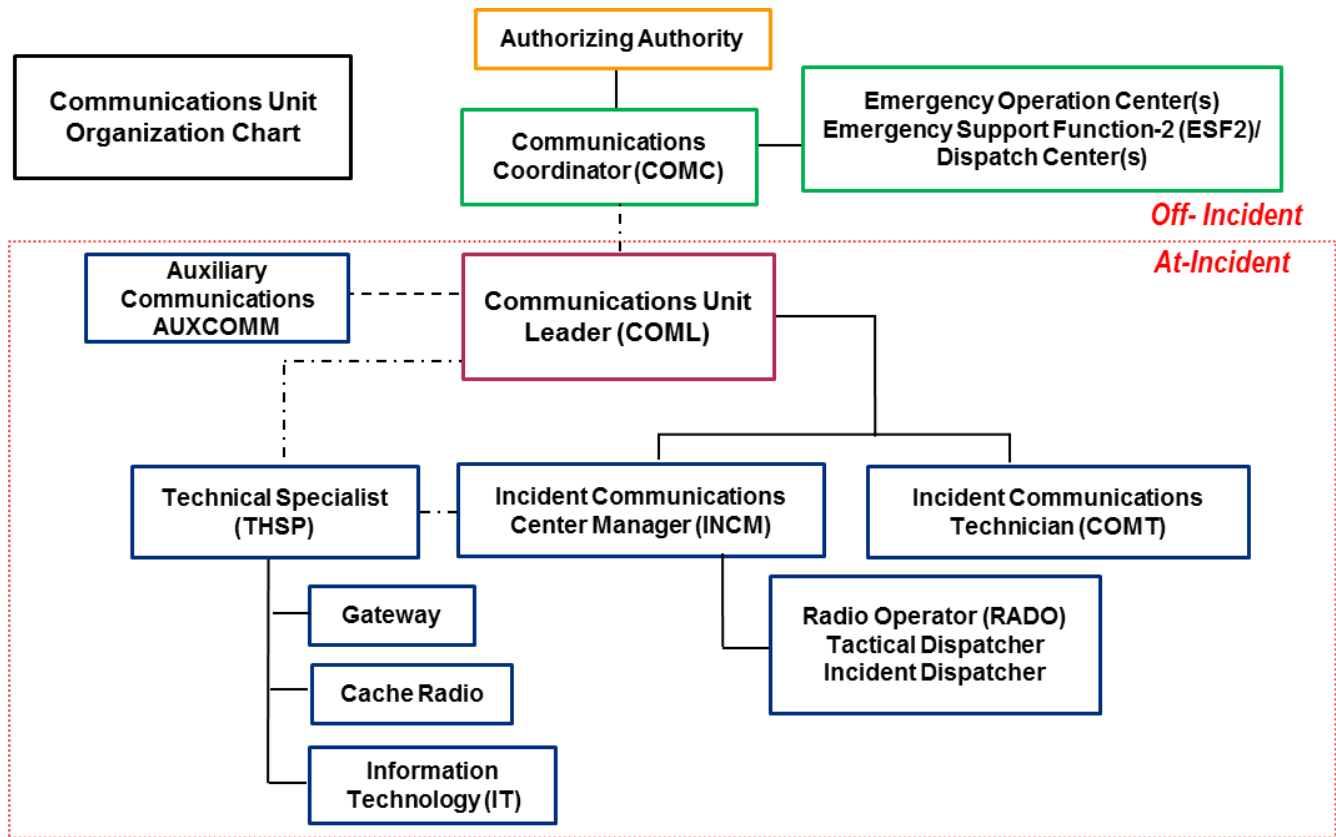
- Agencies are responsible for complying with Memorandum of Understanding (MOUs) and Agreements within their respective jurisdictions.
- Authorized representatives of agencies participating in this plan have the authority to request the use of equipment, including systems and mobile assets, in accordance with Standard Operating Procedures (SOPs).
- Where applicable, agencies will be responsible for consistently maintaining, testing, and exercising connectivity to interoperable communications.
- Incident Commanders (ICs) retain the right to decide how to utilize interoperable communications.

Prioritization and Shared Use of Regional Interoperability Assets

- In response to events or incidents which cross over agency responsibilities, there will potentially be competing demands and priorities for the use of interoperable communications assets.
- An Incident Commander (IC), in cooperation with assisting agencies, will have the authority to request the use of interoperability assets. The IC, Logistics Section Chief, or COML, when designated, will direct further coordination and delegation of the interoperable communications assets assigned to the event or incident in question.

- Agencies should judiciously activate needed interoperable assets both to respond effectively to the event and/or incident and to minimize any negative impact on surrounding agencies or jurisdictions. Specifically, interoperable communications should be attempted with the following order of deployment in mind (subject to the involved agencies' disciplines/responsibilities and the nature of the event/incident).
 1. Leverage face-to-face communications wherever appropriate. For example, co-location of all command and general staff at the Incident Command Post (ICP) provides the best direct communications and reduces the demand on interoperability resources.
 2. Employ local communications assets until those assets become taxed or inadequate based on the nature and/or scope of the incident.
 3. If response agencies operate on disparate systems, use shared or mutual aid channels to establish interoperable communications.
 4. If response agencies do not share systems or channels, use a gateway solution to establish interoperable communications.
 5. Where interoperable communications cannot otherwise be established between response agencies, use swap or cache radios to establish communications for responders.
 6. Use non-public safety common carrier communications systems.
 7. If no other method of interoperability can be established, relay communications through staff members (runners).
- When the same resources are requested for two or more incidents, resource assignments should be based on the priority levels listed below (in decreasing priority; i.e. lower number indicates a higher priority).
 1. Incidents where imminent danger exists to life or property
 2. Disasters, large scale incidents, or extreme emergencies requiring mutual aid or interagency communications
 3. Incidents requiring the response of multiple agencies
 4. Pre-planned events requiring mutual aid or interagency communications
 5. Incidents involving a single agency where supplemental communications are needed for agency use
 6. Drills, tests, and exercises
- In the event of multiple simultaneous incidents within the same priority level, the resources should be allocated with the following principles in mind.
- Incidents with the greatest level of exigency (e.g., greater threat to life or property, more immediate need, etc.) have priority over less exigent incidents.
- Agencies with single/limited interoperability options have priority use of those options over agencies with multiple interoperability options.
- When possible, agencies already using an interoperability asset during an incident or event should not be redirected to another resource.

ICS Communications Unit Organization



ICS Personnel Responsibilities

The following list is applicable to all ICS personnel:

- Receive assignment from your agency, including
 - Job assignment, e.g., Strike Team designator, overhead position, etc.
 - Resource order number and request number
 - Reporting location
 - Reporting time
 - Travel instructions
 - Any special communications instructions, e.g. Travel Channel/Talkgroup
- Upon arrival at the incident, check in at designated Check-In location. Check in may be found at:
 - Incident Command Post (ICP)
 - Base or Camps
 - Staging Areas
 - Helibases
 - If instructed to report directly to a line assignment, check in with the Division/Group Supervisor
- Receive briefing from immediate supervisor
- Acquire work materials
- Conduct all tasks in a manner that ensures the safety of you and your co-workers

- Organize and brief subordinates
- Know the assigned frequency/talkgroup(s) for your area of responsibility and ensure that communications equipment is working properly
- Use clear text and ICS terminology (no codes) in all radio communications. All communications to the Incident Communications Center will be addressed “(Incident Name) Communications,” e.g., “Hayman Communications.”

Communication Unit Leader Position Checklist

Note that some tasks are one-time actions while others are ongoing or repeated during the incident. The term “Communication” may refer to radio systems, data/internet systems, or telephone systems.

- Obtain briefing from appropriate ICS staff member (your supervisor)
- Assess communications systems/frequencies in use – document if not already done
- Organize and staff Communications Unit as appropriate:
- Assign Incident Communications Center Manager (INCM), if necessary
- Order and assign adequate staff (COMTs, RADOs, THSPs)
- Brief incoming staff on current activities, duties, responsibilities and procedures
- Establish safety procedures for personnel and ensure compliance
- Participate in planning cycle meetings and briefings
- Advise on communications capabilities/limitations
- Coordinate all communication systems use with local, area or state Communications Coordinator (COMC) as appropriate
- Develop/implement effective communications flow to/from the Incident Command Post (ICP)
- Assess ICP telephone needs / request additional lines if necessary
- Prepare and implement Incident Radio Communications Plan (ICS 205):
- Obtain current organizational chart (ICS 203 or ICS 207)
- Determine most hazardous tactical activity; ensure adequate communications
- Make communications assignments for all other Operations Section elements
- Determine Command and General Staff communications needs
- Determine support (Logistics, Planning and Admin Sections) communications needs
- Establish specific procedures for use of all communications equipment
- Ensure communications data on ICS 204 and ICS 206 is correct
- Document cellular phones and pagers in Incident Communications Plan (ICS 205T), if appropriate:
- Determine specific organizational elements to be assigned telephones
- Identify all facilities/locations needing telephone communications, identify/document phone numbers
- Determine which phones/numbers should be used by what personnel and for what purpose. Assign specific telephone numbers for incoming calls, and report these numbers to staff and off-site parties
- Do Not publicize OUTGOING phone lines
- Activate, serve as contact point, integrate and supervise auxiliary communications units (AUXCOMM)
- Ensure use of Communications Logs (ICS 309) for radio and telephone traffic
- Determine need and availability of additional nets and systems:

- Obtain copy of local Tactical Interoperable Communications Plan (TICP)
- Order resources as appropriate after approval by Section Chief
- Ensure that communications equipment operation is monitored continuously
- Document malfunctioning communications equipment, facilitate repair
- Establish and maintain communications equipment accountability system
- Provide technical information, as required, on:
 - Adequacy of communications system currently in use
 - Geographic limitation on communications equipment
 - Equipment capabilities
 - Amount and types of equipment available
 - Anticipated problems in the use of communications
- Estimate Communications Unit needs for expected operations, order relief personnel
- Provide briefing to relief on current activities and unusual situations
- Document all activity on Unit Log (ICS 214)

General Rules of Use for Interoperability Assets

The following general requirements apply to interoperability channels designated specifically for that purpose.

Encryption

The use of FCC-designated interoperability channels for the transmission of encoded, encrypted or scrambled messages is prohibited.

Monitoring of Channels

Personnel should monitor interoperability channels/talkgroups prior to transmitting to minimize the possibility of interference with in-progress communications.

Plain Language

All communications on interoperability channels/talkgroups shall be in plain language. Abbreviations, acronyms and radio codes shall be avoided since they may cause confusion between agencies.

Unit Identification

The agency name or identifier shall always precede the unit identifier when operating on interoperability channels and talkgroups. The following additional procedures then apply:

Always identify who you are calling first, followed by your unit ID. There is an implied "this is" between the two IDs, e.g., "Ocean Engine 51, "Division B, XXX Strike Team 2001 C," or "Golden Dog 1, State Patrol 21 (Note: these are examples)." This identification process is critical, especially when a unit is broadcasting an emergency.

Units must use their agency-assigned unit designator during transmissions. These should not be shortened and should include the entire set of letters and/or numbers.

Base stations should identify themselves by using their agency name along with any other usual identifier. Unless equipped for automatic station ID, base stations must also use the FCC call sign shown on their license at least once every 30 minutes or at the end of a series of transmissions.

When agencies, operating on different radio systems, respond to incidents requiring interoperability, units should finish their transmission with the channel on which they are transmitting (e.g., ""Command, this is Monson Ambulance A1" or "Operations, Division A on Command" Note: these are examples).

Loaned Equipment

Equipment Return – The requesting agency is responsible for the returned condition of any equipment that is issued to them. Individuals or agencies will be billed for any replacement costs for equipment, accessories, batteries and any other item that was not returned in the same condition as issued.

Resource Management (Equipment and Personnel)

Request

Radio users requiring direct communication with a user from a different agency shall follow their agency's established procedures for requesting connectivity.

The following information should be provided by the requesting agency at the time of an activation request:

- Requesting user's agency.
- On-scene agencies requiring interoperability.
- Reason for request/type of incident.
- Equipment and/or personnel required.
- Expected duration of incident.
- Reporting location (ICP, Staging Area, etc.)
- Any special travel information, to include any designated "travel" channel(s)/talkgroup(s).
- Requester's and/or dispatch center contact telephone number.

Mobilization

The responding agency POC should provide estimated activation and response times to be relayed to the dispatch center of the agency having jurisdiction over the incident. The dispatch center will relay the information to the Incident Commander or designee.

Supporting agency responder(s) should respond with appropriate equipment and supplies required to support their participation in the incident for the expected duration of that incident.

Staging

Supporting agency responder(s) should arrive at the designated arrival/staging location/Incident Command Post.

Responder(s) should check in with the appropriate manager at the incident and complete any required ICS forms prior to reporting to their specific assignment(s).

Assignment/Deployment

Operators or providers of interoperability equipment, once checked in to an incident, should report to the COML for specific information on their assignment.

Deactivation/Demobilization

IMPORTANT: Active channels/talkgroups supporting responders in hazardous or remote locations must be very carefully deactivated so that no responder is left on **an interoperability resource with the belief that it is** still active and/or still being monitored by a RADO or supervisor. In such deactivations, a rollcall of all responders on the channel is appropriate to ensure that the demobilization message has been received and responders are switching to their new assigned channel or talkgroup.

Before leaving the incident scene, responder(s) should check out with their supervisor and any appropriate manager at the incident, and complete any required ICS forms, as appropriate for the incident:

- Unit Log (ICS Form 214)
- Demobilization Checkout (ICS Form 221)
- Performance Rating (ICS Form 225)

Request to use Communication Resources

Un-Planned Event	Pre-Planned Event
<ul style="list-style-type: none"> • Consult on-scene COML or equivalent • Contact Local EMA with information required in Request form • Describe nature/incident type • Communications equipment requested • Location of Incident • Agencies involved • Anticipated duration • POC information • Additional resources needed • Local EMA Director submits request • EMA ESF-2 function assigns appropriate assets • Responding agency notified to deploy assets • Track deployment and delivery progress 	<ul style="list-style-type: none"> • Consult COML or equivalent • Submit request at least 60-90 days in advance of event start date to EMA • Supply Local EMA with information required in Request form • Describe nature/incident type • Communications equipment requested • Location of Incident • Agencies involved • Anticipated duration • POC information • Additional resources needed • Local EMA submits request to State EMD • EMA ESF-2 function assigns appropriate assets • Responding agency notified to deploy assets; or requestor picks up desired cache • Track deployment and delivery progress

Washington State Regional Interoperability Assets

The following pertains to all regions.

Shared Systems

Shared systems provide public safety/service communications for agencies within the region. “Shared system” refers to a single radio system used to provide service to several public safety or public service agencies.

“Intra-system shared channels” refers to common frequencies/talk groups established and programmed into radios to provide interoperable communications among agencies using the same shared radio system. “Channel,” in this context, refers to the name of a common frequency/talk group programmed into a user’s radio.

Gateways

Gateways interconnect channels of disparate systems (whether on different frequency bands or radio operating modes), allowing first responders using their existing radios and channels to be interconnected with the channels of other users outside of their agency.

A **Communications Unit Leader (COML) or Incident Commander (IC)** must be aware that multiple gateway activations in support of an incident can result in interference. Interference issues are best resolved by the technical support personnel assigned to the gateways.

Whenever possible, patches of one talkgroup to another talkgroup on the same system or platform should be accomplished at the console level to minimize channel loading.

Requesting a Gateway - The incident COML/COMC or their designee determines when a situation exists that requires the use of a radio gateway and notifies the appropriate dispatch center. The COML or COMC determines what gateways are available for use, identifies a specific gateway, activates that gateway, and coordinates the gateway deployment with the requesting agency Incident Commander or their designee.

Repeaters

A “repeater” is a combination of a radio receiver and a radio transmitter that receives a weak or low-level signal and retransmits it at a higher level or higher power, so that the signal can cover longer distances without degradation. “Mobility” of a repeater is defined as:

- Portable: can be carried by a person and is self-contained.
- Transportable: requires a vehicle to transport it and can be setup to operate external to the transport vehicle.
- Vehicle Mounted: **mounted/fixed in the transport vehicle and operates from within.**

There are two types of repeaters: a simplex repeater and a duplex repeater.

A **simplex repeater** consists of a radio on a simplex frequency and a digital voice recorder. When a signal is received, the recorder stores the message (usually up to 60 seconds maximum.). When the received signal ends, the digital voice recorder retransmits the message on the same frequency. A commonly used term to describe this activity is “store and forward”.

A **duplex repeater** uses two radio frequencies; a receive frequency for incoming signals and a transmit frequency, on which it retransmits the received signals. The repeater transmits and receives at the same time; i.e., simultaneously.

Some jurisdictions have deployed radio repeaters that provide interoperable communications allowing efficient coordination of first responders during an incident or planned event. These repeaters may be in fixed positions using permanent towers; or they may be transportable, allowing for deployment at or near the incident scene. Proper operation of repeater stations is necessary for the efficient use of the interoperability channels, especially in minimizing and eliminating potential interference.

Best Practice Summary:

- Only the minimum number of calling channel repeaters should be in “Repeater ON” mode across the region.
- Repeaters on the tactical frequencies should always be in “Repeater OFF” mode, unless they are actually in use.
- Agencies should periodically check their repeaters to make sure they are in “Repeater OFF” mode to prevent interference to other agencies.
- Having multiple repeaters active on the same frequency in the same area causes the mobile and portable radio users to hear interference from multiple repeaters.
- Dispatch centers using direct repeater control normally cannot hear other active repeaters on their consoles unless they also have a monitor radio on that channel. They will hear the input channel from any mobile, portable, or control stations from any agency within range of their repeaters.
- Calling Channels - Many agencies monitor the calling channels for their area on their own repeaters.
- Tactical Channels are used for incident communications.
- All tactical repeaters will be set to “Repeater Off”, or equivalent, unless needed for an incident or event in that area.
- If possible, configure tactical repeaters to default to “Repeater OFF” in the event of a power cycle or other disruption.
- In general, the tactical channel repeater that is closest to the incident and provides the minimum effective coverage area for the incident should be used. This allows greater reuse of frequencies for multiple incidents across the region.
- Requesting a Repeater - The incident COML/COMC or their designee determines when a situation exists that requires the use of a repeater and notifies the appropriate dispatch center. The COML or COMC determines what repeater are available for use, identifies a specific repeater, activates that repeater, and coordinates the repeater deployment with the requesting agency Incident Commander or their designee.

Radio Cache

A “radio cache” refers to a designated reserve of standby radios that can be deployed to support regional incidents. These radios may be from a regional cache or from a participating agency. These radios allow all responders to use common, compatible equipment during an incident.

Requesting a Cache - The incident COML/COMC or their designee determines when a situation exists that requires the use of a radio cache and notifies the appropriate dispatch center. The COML or COMC determines what radio caches are available for use, identifies a specific cache, activates that cache, and coordinates the cache deployment with the requesting agency Incident Commander or their designee.

Data Communications

Data Communications refers to deployable computer networks, devices and applications that support real time data exchange between public safety entities involved in a coordinated incident response or any mutual aid effort.

Networks/Connections

The Radio Access Network (RAN) portion of the network consists of the radio base station infrastructure that connects to user devices. RAN includes cell towers as well as mobile hotspots embedded in vehicles that backhaul to the core network over satellite or other types of wireless infrastructure.

A local area network (LAN) is a group of computers and associated devices that share a common communications line or wireless link to a server. Typically, a LAN encompasses computers and peripherals connected to a server within a distinct geographic area such as an office or a commercial establishment. Computers and other mobile devices use a LAN connection to share resources such as a printer or network storage.

Devices/Sensors

Devices and sensors refer to the many types of user access points that send and receive voice, data, or video information over the network. Devices and sensors consist of hardware items such as smartphones, computers/laptops, telecommunications systems, tablets, dongles, and cameras, along with a wide variety of specialized products designed for public safety or other purposes. Device Type Description: End-User Handheld (e.g., voice, data, video, multi-function, etc.), Remote Sensor (e.g., handheld/ portable, transportable, vehicle mounted, fixed site), IP Camera, Environmental Sensor.

Applications

A mobile application, most commonly referred to as an app, is a type of application software designed to run on a mobile device, such as a smartphone or tablet computer. Mobile applications frequently serve to provide users with similar services to those accessed on PCs.

Mobile Communications Units (MCU)

A Mobile Communications Units Center (MCU) refers to any vehicular asset that can be deployed to provide or supplement communications. The following additional policies and procedures apply to establishing interoperable communications between agencies via MCUs:

- Equipment Return – The requesting agency is responsible for the return of any MCUs in the condition that they were received and/or as dictated by existing Memoranda of Agreement (MOAs).
- Resource Modifications – The requesting agency is not allowed to change anything in the MCU without written permission of the owning agency.
- Technical Support – Qualified MCU THSPs or COMTs must be available for on-scene support during the deployment of MCUs.

Auxiliary Communications (AUXCOMM)

Through ICS the amateur radio section is known as AUXCOMM. Individual operators are designated Auxiliary Communicators (AUXC) and a lead position is identified as Auxiliary Communications Manager (AUXM).

Amateur Radio Emergency Services (ARES)

A program of the American Radio Relay League (ARRL). ARES consists of amateur radio operators who volunteer to provide emergency communications when needed. ARES groups are structured at the county level and often closely aligned with emergency management.

Radio Amateur Civil Emergency Service (RACES)

RACES is a services defined in FCC rules part 97.407 of licensed amateur radio operators registered with the local “civil defense organization” to provide auxiliary emergency communications on behalf of local, state or federal government.

Each local RACES group is administered by a local government agency responsible for disaster services. RACES may be activated by the director of an emergency management office, or authorized representative, for a particular area. The activation is in accordance with an approved civil defense communications plan.

Auxiliary Communications Service (ACS)

ACS is an organization of volunteer radio operators serving a local government agency. ACS is organized and managed locally without the limitations the FCC defines for RACES.

More information about the AUXCOMM groups and organization around the state can be found at <https://www.waraces.us/>.

10th Civil Support Team (WA)

Agency:	10th Civil Support Team (WA)
Contact Name:	William Bean
Title:	Communications Chief
Address:	
Office Phone:	253 512-7689/253 377-7239
24/7 Phone:	253 377-7225 (Supervisor)
E-Mail:	william.a.bean10.mil@army.mil

Two communications experts who maintain and employ the:

- Unified Command Suite (UCS) W/ Kymeta
- ADVONB2 W/ Starshield
- Dismounted Strike Kit (DSK) / StarShield



Dismounted Strike Kit (DSK) / StarShield

ADVON (Advanced Echelon)

Radios
<ul style="list-style-type: none"> • APX 8500 • Harris 152A • ACU-T
ICRI (Incident Commander Radio Interface)
<ul style="list-style-type: none"> • Cross Banding Frequencies • Range Extender (Retransmit) • Misc. Patching
Phones
<ul style="list-style-type: none"> • Analog • VOIP • Commercial and DSN • Iridium Satellite Phone • 4G Cellular FIRSTNET • TOCNET
Data
<ul style="list-style-type: none"> • Satellite (Commercial) • Starlink • NIPRNET • Wired/Wireless • Commercial • IT Assets <ul style="list-style-type: none"> ○ 1 IT Stack ○ 2 MFK Computers ○ 1 MFK Server (Military or Commercial)



ADVON (Advanced Echelon)

JRIS (Joint Regional Interoperability Suite)

Radios
<ul style="list-style-type: none"> • 5 APX 8500 (UHF,VHF,800) <ul style="list-style-type: none"> ○ Preloaded with State and National interop channels • APX 8000 Portables • 1 UHF/VHF Harris 117g • 1 UHF/VHF Harris 152A • TOCNET • HF Radio and Antenna
Mobile Repeaters
<ul style="list-style-type: none"> • Daniels 30 W • RELM • CODAN 30 W
Phones
<ul style="list-style-type: none"> • Analog • VOIP • Commercial and DSN • Iridium Satellite Phone • viPer Secure Phone



Video
<ul style="list-style-type: none"> • Video Teleconference • Mast w/camera • Down range video system
Data
<ul style="list-style-type: none"> • NIPRNET and Commercial • Wireless • Firstnet 4G • Starlink • MPU5 Mesh Network

<ul style="list-style-type: none"> • Satellite (Military)
IT Assets
<ul style="list-style-type: none"> • IT Stack • 13 MFK Computers/Tablets • 1 MFK Server (Military or Commercial)
DSK (Dismounted Strike Kit)
<ul style="list-style-type: none"> • NIPR • Commercial Internet <ul style="list-style-type: none"> ○ Wired and Wireless • VOIP

MPU-5
<ul style="list-style-type: none"> • Creates a Mesh Network • Approx. 1-2 Mile Range • Can be extended where ever is needed • Approx. 5-10 Mile Range with high gain directional antenna
Misc
<ul style="list-style-type: none"> • 20KW Generator <ul style="list-style-type: none"> ○ Power TOC, break out boxes, other CST activities as needed • EZW Network Extender Kit • Network Transit Case

Washington State Shared Systems (All Regions 1 thru 9)

System Name	Agency	Freq	24 Hr. #
On-Scene Command and Coordination (OSCCR)	Washington State Emergency Management Division (EMD)	VHF High Band (HB)	253 512-7176
Comprehensive Emergency Management Network (CEMNET)	Washington State EMD	VHF Low Band (LB)	253 512-7176
State Emergency Communications Using Radio Effectively (SECURE)	Washington State EMD	HF	253 512-7176
WSP Radio	Washington State Patrol (WSP)	VHF/700 MHz	360 596-4000
Washington State Department of Transportation (WSDOT) Radio (ITS) Intelligent Transportation Systems & Wireless Technology	Washington State Department of Transportation (WSDOT)	VHF HB 800 MHz to 700 MHz P25 Phase II	
Department of Natural Resources (DNR) Radio	Department of Natural Resources (DNR)	VHF HB	360 902-1480
WILDCOMM	Department of Fish & Wildlife (DFW)	VHF HB/UHF Trunked and Conv/700 MHz Trunked/800 MHz Trunked	360 902-2447
DOC Radio	Department of Corrections (DOC)	800 MHz	
Washington State Department of Enterprise Services (DES) Capitol Complex Radio	DES		
IWIN	Federal Bureau of Investigations (FBI)	800 MHz SmartZone V4.1	425 487-4621

Washington State Interoperable Channels

The following frequencies are identified for the use as stated. Approval and authorization by the agency identified is needed prior to being used.

Use	Frequency	Approval/Authorization
On-Scene Command and Coordination (OSCCR)	156.1350 MHz	Washington State Emergency Management Division (EMD)
Search and Rescue (SAR)	155.1600 MHz	Washington State EMD
State Fire Control Channel - REDNET/FIRECOM	153.8300 MHz	Washington State Fire Chiefs Association (WSFCA)
National Law Enforcement Emergency Channel (NLEEC)	155.4750 MHz	Washington State Patrol (WSP)
Hospital Emergency Administrative Radio (HEAR)	155.2800 MHz (Hospital to Hospital)	Washington State Patrol (WSP)
VMED28 (Ambulance to Hospital)	155.3400 MHz	Washington State Patrol (WSP)
Medical Emergency Delivery Network (MEDNET)	462.9500 MHz and 468.1750 MHz	FCC

OSCCR: Primarily used by public-safety agencies, "on-scene" at an event/incident, for command and coordination of activities between agencies. OSCCR can only be employed in the simplex mode via mobile and/or handheld equipment. For further information and/or obtain authorization for its use contact the EMD Telecommunications Section at: 253.512.7302 or <https://mil.wa.gov/other-radio-systems>

SAR: Primarily used by Search and Rescue organizations for coordinating operations between SAR units. Can only be employed in the simplex mode via mobile and/or handheld equipment. Authorization for all federal, state, local and private entities actively involved in SAR operations or training can be found at [SAR Frequency Authorization Letter](#) or <https://mil.wa.gov/asset/5ba420d411886> (PDF). For further information and/or to obtain authorization for its use contact the EMD Telecommunications Section at: 253.512.7036

REDNET/FIRECOM: Primarily used by fire departments and districts for coordinating operations between fire-fighting units. For further information and/or obtain authorization for its use contact the [Washington State Association of Fire Chiefs \(WSAFC\)](#) or <http://www.washingtonfirechiefs.com/>.

NLEEC: Primarily used by law enforcement agencies for mutual operations. Also used by EMD for activation of the [Emergency Alert System \(EAS\)](#) relay network. For information and/or obtain authorization for its use contact the [Washington State Patrol \(WSP\)](#) or <http://www.wsp.wa.gov/>.

HEAR: Primarily used for communications between hospitals. VMED28 is used for communications between ambulances and hospitals. Both of these are licensed by WSP and they are willing to do authorizations.

MEDNET: Primarily used by ambulance services for medical operations with hospitals while enroute.

VHF Interoperable Channels

Name	Primary Use	Frequency		Tone
		Tx	Rx	Rx/Tx
CEMNET F1	Emergency Management (Licensed by State EMD and others)	45.2000	45.2000	127.3
CEMNET F2		45.3600	45.3600	127.3
CEMNET F3		45.4800	45.4800	127.3
MARS ¹	Mutual Aid	154.6500 N	155.1900 N	100
HEAR	Hospitals and Emergency Medical Services	155.2800 N	155.2800 N	CSQ
VMED28	Hospitals and Emergency Medical Services	155.3400 N	155.3400 N	CSQ
LERN	Law (Licensed by WSP and others)	155.3700 N	155.3700 N	CSQ
On-Scene Command and Coordination (OSCCR)	(Licensed by WSP)	156.1350 N	156.1350 N	CSQ
REDNET	State Fire (WSP has statewide license)	153.8300 N	153.8300 N	
SAR	SAR (EMD has statewide license KRG779)	155.1600 N	155.1600 N	CSQ
SAR 2	SAR (EMD has statewide license WQFY938)	155.2425 N	155.2425 N	CSQ/156.7
SAR 3	SAR (EMD has statewide license WQFY938)	155.3025 N	155.3025 N	CSQ/156.7
SAR 4	SAR (EMD has statewide license WQFY938)	155.1675 N	155.1675 N	CSQ/156.7
SAR 5	SAR (EMD has statewide license WQFY938)	155.1825 N	155.1825 N	CSQ/156.7
Scene TAC	DNR Common	151.4150 N	151.4150 N	CSQ
WSP COMM	WSP (WSP calls this STATE)	155.9700N	155.9700 N	CSQ
Marine 16	Marine (Coast Guard only)	156.8000 W	156.8000 W	CSQ

Default operation should be carrier squelch receive, CTCSS 156.7(5a) TX. If the user can enable/disable CTCSS without reprogramming the radio, the indicated CTCSS tone should also be programmed for receive, and the user instructed how and when to enable/disable.

Search and Rescue

These frequencies are to be used for “Search and Rescue Operations and Training activities only”. The SAR frequency (155.160) was previously approved by the FCC for other types of entities and users are advised to operate on a cooperative and/or non-interference basis with those other license holders. SAR 2, 3, 4 and 5 are exclusively licensed statewide for SAR activities under the WQFY938 license and [EMD authorization letter](#).

Washington Weather Radio (Rx ONLY!)

Callsign	Site Name	Frequency	Weather Office
WZ2502	Randle	162.425	Seattle/Tacoma WA
WXN21	Cle Elum	162.400	Pendleton OR
WXM62	Capitol Peak	162.475	Seattle/Tacoma WA
WXM48	Wenatchee	162.475	Spokane WA
WXL86	Spokane	162.400	Spokane WA

¹ Tied to King County trunked LMR System as MARS 800. WSP has a mobile license.

Callsign	Site Name	Frequency	Weather Office
WWH27	Plymouth	162.425	Pendleton OR
WWG24	Puget Sound Marine	162.425	Seattle/Tacoma WA
WWF56	Richland	162.450	Pendleton OR
WWF49	Okanogan	162.525	Spokane WA
WNG604	Davis Peak	162.525	Portland OR
KZZ73	Dayton	162.525	Pendleton OR
KXI27	Forks	162.425	Seattle/Tacoma WA
KIH36	Neah Bay	162.550	Seattle/Tacoma WA
KIG75	Yakima	162.550	Pendleton OR
KHB60	Seattle	162.550	Seattle/Tacoma WA
KEC91	Astoria	162.400	Portland OR
KAD93	H Street - Blaine Area	162.525	Seattle/Tacoma WA

800 MHz Interoperable Channels

Name	Primary Use	Frequency		Tone
		Rx	Tx	Rx/Tx
STATEOPS-1	State Operations/Fire-EMS	852.5375	807.5375	156.7
STATEOPS-1D	State Operations/Fire-EMS	852.5375	852.5375	156.7
STATEOPS-2	State Operations/Law	852.5625	807.5625	156.7
STATEOPS-2D	State Operations/Law	852.5625	852.5625	156.7
STATEOPS-3	State Operations/Common	852.5875	807.5875	156.7
STATEOPS-3D	State Operations/Common	852.5875	852.5875	156.7
STATEOPS-4	State Operations/Fire-EMS	852.6125	807.6125	156.7
STATEOPS-4D	State Operations/Fire-EMS	852.6125	852.6125	156.7
STATEOPS-5	State Operations/Law	852.6375	807.6375	156.7
STATEOPS-5D	State Operations/Law	852.6375	852.6375	156.7

For all 800 MHz users, STATEOPS3 will be implemented in simplex mode on the repeater output frequency (852.5875). This will provide a common simplex communications path for any 800 MHz radio used in the state.

In addition to the above required channels, licensees are also encouraged to implement as many of the other STATEOPS channels as is reasonable for their operation. For example, a fire department or EMS agency may also choose to put STATEOPS1 and STATEOPS4 on their radios and a police department may choose STATEOPS2 and STATEOPS5. Additionally, agencies should implement the STATEOPS channels in the full repeat mode if they also operate, or participate in the operation of, a temporary mobile repeater for unique events.

700 MHz Interoperable Channels (Narrowband Digital)

Name	Primary Use	Frequency	
		Rx	Tx
7CALL50	Calling Channel	769.24375	799.24375
7TAC51	General Public Safety Services	769.14375	799.14375

Name	Primary Use	Frequency	
		Rx	Tx
7TAC52	General Public Safety Services	769.64375	799.64375
7TAC53	General Public Safety Services	770.14375	800.14375
7TAC54	General Public Safety Services	770.64375	800.64375
7TAC55	General Public Safety Service	769.74375	799.74375
7TAC56	General Public Safety Service	770.24375	800.24375
7GTAC57	Other Public Service	770.99375	800.99375
7MOB59	Mobile Repeater	770.89375	800.89375
7LAW61	Law Enforcement Service	770.39375	800.39375
7LAW62	Law Enforcement Service	770.49375	800.49375
7FIRE63	Fire Service	769.89375	799.89375
7FIRE64	Fire Service	769.99375	799.99375
7MED65	Emergency Medical Service	769.39375	799.39375
7MED66	Emergency Medical Service	769.49375	799.49375
7DATA69	Mobile Data ²	770.74375	800.74375
7CALL70	Calling Channel	773.25625	803.25625
7TAC71	General Public Safety Services	773.10625	803.10625
7TAC72	General Public Safety Services	773.60625	803.60625
7TAC73	General Public Safety Services	774.10625	804.10625
7TAC74	General Public Safety Services	774.60625	804.60625
7TAC75	General Public Safety Services	773.75625	803.75625
7TAC76	General Public Safety Services	774.25625	804.25625
7GTAC77	Other Public Services	774.85625	804.85625
7MOB79	Mobile Repeater	774.50625	804.50625
7LAW81	Law Enforcement Service	774.00625	804.00625
7LAW82	Law Enforcement Service	774.35625	804.35625
7FIRE83	Fire Service	773.50625	803.50625
7FIRE84	Fire Service	773.85625	803.85625
7MED86	Emergency Medical Service	773.00625	803.00625
7MED87	Emergency Medical Service	773.35625	803.35625
7DATA89	Mobile Data ³	774.75625	804.75625

Mode: Only P25 FDMA Phase 1 Common Air Interface permitted per FCC R&O 14-172 ¶ 87 (10/24/2014).

All channels have a Direct (Simplex) mode with transmit on the receive frequency.

TX NAC: \$293 RX NAC \$F7E Talk Group ID: \$00001 Manufacturer's ID: \$00

Message ID: \$00000000000000000000 Encryption: No encryption on calling channels

- Algorithm ID: \$80 (12810)
- Key ID: \$0000

² Voice communications are permitted on 7DATA69 and 7DATA89 on a secondary basis 90.531(b)(1)(i)

³ Voice communications are permitted on 7DATA69 and 7DATA89 on a secondary basis 90.531(b)(1)(i)

Washington State Department of Corrections

Agency:	Washington State Department of Corrections
Contact Name:	Chris Welch
Title:	Emergency Communications Specialist
Address:	7345 Linderson Way SW Tumwater, WA 98501
Office Phone:	360 725-8491
24/7 Phone:	360 480-2696
E-Mail:	cjwelch@doc1.wa.gov

Gateways

Fixed Gateways

Name/Gateway Type	24 Hr. #	Agency
SyTech/Radius 2U	360 480-2696	Washington State DOC

Transportable/Mobile Repeaters

Name/Agency	24 Hr. #	Band	Qty
Chris Welch/Washington State Department of Corrections	360 480-2696	800MHz	1

Radio Cache

Name/Agency	24 Hr. #	Make/Mode (Qty)	Band
Washington State DOC	360 480-2696	Motorola APX 8000 (15)	700/800/VHF/UHF
Washington State DOC	360 480-2696	Motorola APX 1000/6000 (5)	UHF
Washington State DOC	360 480-2696	Motorola APX 7000 (100)	700/800/VHF

Mobile Communications Units (MCU)

Unit ID/Designator	Agency/Location	24 Hr. #
MOCC	Washington DOC/7345 Linderson Way SW Tumwater, WA	360 480-2696

Interoperable Channels Frequencies

VHF/UHF Interoperable Infrastructure

Name	Primary Use	Frequency			
		Rx	RX Tone	Tx	Tx Tone
LERN	Mutual Aid	155.3700 N	CSQ	155.3700 N	100.0

700/800 MHz Interoperable Infrastructure

Name	Primary Use/Locations	Frequency			
		Rx	RX Tone	Tx	Tx Tone
8TAC93	Mutual Aid/All 10 Prisons	852.5125 W	156.7	807.5125 W	156.7

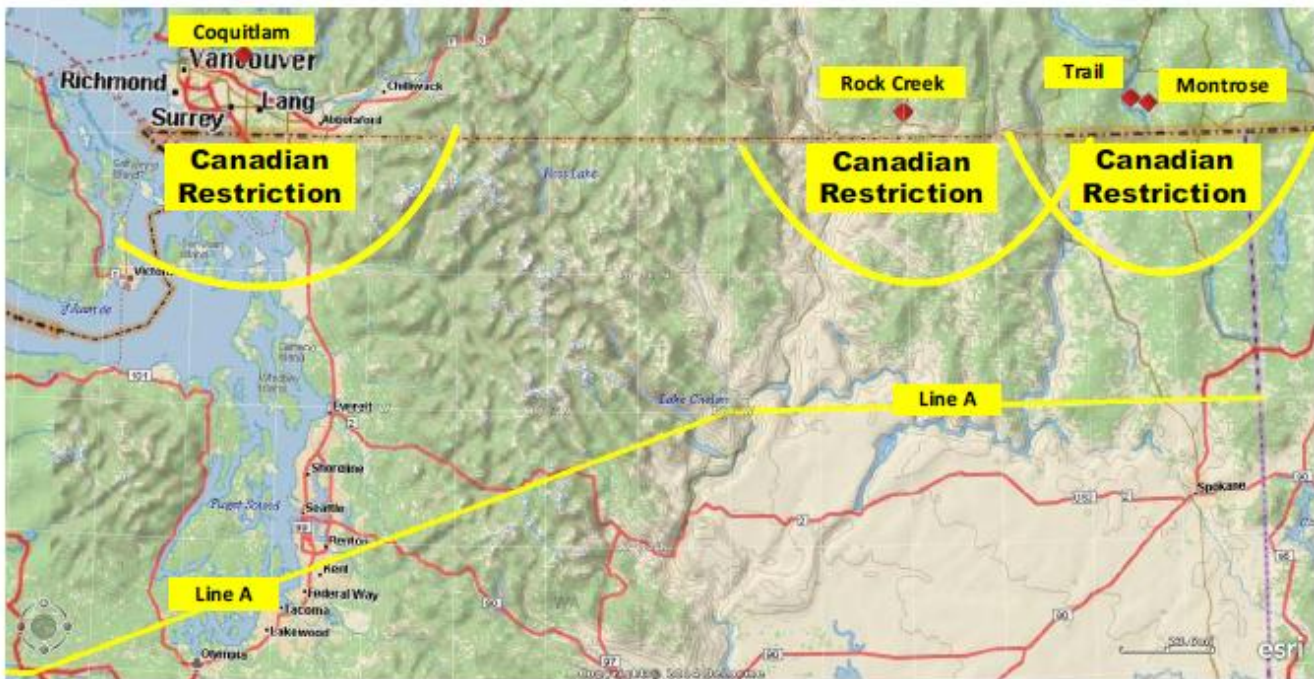
Washington State Department of Fish and Wildlife (DFW)

Agency Communications POC Information

Agency:	Dept of Fish & Wildlife, Enforcement Program
Contact Name:	Michael Grant
Title:	Senior Wireless Communications Technician 4
Address:	9628 Lathrop Industrial DR SW, Tumwater, WA 98512
Office Phone:	N/A
24/7 Phone:	360-489-4725
E-Mail:	Michael.Grant@dfw.wa.gov

Agency Dispatch Center

Agency:	WILDCOMM Dispatch
Contact Name:	Fletcher Mansfield
Title:	Communications Officer 3
Address:	1111 Washington St, Olympia 98504
Office Phone:	360-902-2447
24/7 Phone:	360-915-2779
E-Mail:	fletcher.mansfield@dfw.wa.gov



DFW Tactical Channels: Fish & Wildlife has included the following channels in the Radio Sharing Agreement. DNR use is secondary; these are to be used as a last resort. As noted, there are Canadian restrictions.

Name	User RX	Tone	User TX	Tone	Notes
DFW TAC 6	153.9350	186.2	153.9350	186.2	1
DFW TAC 7	151.4975	186.2	151.4975	186.2	2
DFW TAC 18	151.4900	186.2	151.4900	186.2	3

Note: 153.9350 MHz — Cannot be used within 80 KM of Rock Creek B.C., Canada (49.0321N – 118.5951W); 50 KM of Coquitlam, B.C. Canada (49.1500N – 122.4812W) or Trail, B.C., Canada. ERP < 25W. (See Map) / 151.4975 MHz — Below Line A and Whatcom, Skagit, Snohomish, King, Kitsap, Clallam, Jefferson, Mason, Island and Grays Harbor Counties. 3. 153.9350 MHz — Note Canadian Operation at Montrose, BC.

WILDCOMM and officers utilize and monitor all of the DNR “State” repeaters listed in their section. WILDCOMM direct line is 360-902-2447 open 7 days a week from 0700-2000.

Washington State Department of Natural Resources

Agency Communications POC Information

Agency:	Dept of Natural Resources
Contact Name:	Anton Damm
Title:	Radio Operations Program Director
Address:	815 88th Ave SE, Tumwater 98501
Office Phone:	360 902-1186
24/7 Phone:	360 951-8730
E-Mail:	Anton.Damm@dnr.wa.gov

Agency Dispatch Center

Agency:	Dept of Natural Resource Coordination Center
Contact Name:	Jennifer Bammert
Title:	Dispatch Center Manager
Address:	1111 Washington St, Olympia 98504
Office Phone:	360 902-1300
24/7 Phone:	360 902-1300
E-Mail:	Jennifer.Bammert@dnr.wa.gov

Repeaters

Fixed Repeaters

Name/Agency	24 Hr. #	Frequency			
		Rx	Rx Tone	Tx	Tx Tone
DNR Northeast Region	509 685-6900 Dispatch				
Brewster	Goat Mtn	159.4350	123.0	151.2425	123.0
Cheney	Mica Peak	159.3675	156.7	151.4675	156.7
Chewelah	Stranger Mtn	159.4500	156.7	151.4600	118.8
Colville	Flagstaff Mtn	159.4350	156.7	151.1600	156.7

Deer Park	Chewelah Peak	159.4050	156.7	151.2500	156.7
Lincoln	Reinbold Ranch	159.2400	156.7	151.2650	156.7
Okanogan	Little Buck Mtn	159.3150	156.7	151.3025	118.8
Republic	Bodie Mtn	159.3600	118.8	151.2350	118.8
Tonasket	Aeneas Mtn	159.3675	118.8	151.2575	156.7
State Aeneas	Aeneas Mtn	159.4200	D261	151.2950	D261
State Mead	Mt Spokane	159.4200	D664	151.2950	D664
State Methow	Little Buck Mtn	159.4200	D172	151.2950	D172
State Pateros	Goat Mtn	159.4200	D125	151.2950	D125
State Pend Oreille	Calispell Peak	159.4200	D754	151.2950	D754
State Stevens	Stranger Mtn	159.4200	D047	151.2950	D047
DNR Northwest Region	360 854-2824 Dispatch				
Arlington	Frailey Mtn	159.3300	156.7	151.2500	192.8
Lyman	Lyman Hill	159.3750	141.3	151.3700	141.3
Orcas	Mt Constitution	159.2400	114.8	151.2350	114.8
Sauk	Leonard Ridge	159.2850	141.3	151.3850	141.3
Snohomish	Maynard Hill	159.4350	141.3	151.1900	141.3
Sultan	8 Mi NE of Sultan	159.2475	141.3	151.1825	141.3
Sumas	Sumas Mtn	159.3150	141.3	151.3250	141.3
State Index	Deer Flats	159.4200	D516	151.2950	D516
State San Juan	Mt Constitution	159.4200	D143	151.2950	D143
State Skagit	Lyman Hill	159.4200	D073	151.2950	D073
DNR Olympic Region	360 374-2800 Dispatch				
Canal	Gold Mtn	159.3450	103.5	151.1600	103.5
Discovery	Maynard Hill	159.4050	103.5	151.2200	206.5
Hoh	Octopus Mtn	159.2025	D365	151.2125	D131
Ozette	Ellis Lookout	159.2550	D365	151.4000	D131
Quinalt	Neilton Point	159.4575	D365	151.2500	D131
Straits	Striped Peak	159.3000	173.8	151.2650	173.8
Wishkah	Weatherwax Ridge	155.7600	114.8	151.1300	82.5
Harbor	Scar Hill	159.4425	D365	151.4450	D131
State Forks	Octopus Mtn	159.4200	D412	151.2950	D412
State Westport	Scar Hill	159.4200	D251	151.2950	D251
State Sequim	Blyn Mtn	159.4200	D205	151.2950	D251
DNR Pacific Cascade Region	360 575-5089 Dispatch				
Abernathy	Abernathy Mtn	151.4750	173.8	159.1950	162.2
Baw Faw	Boistfort Peak	159.3825	136.5	151.4000	136.5
Burley	Burley Mtn	159.2175	173.8	151.1450	173.8
Capitol	Capitol Peak	159.2250	136.5	151.4300	173.8
Defiance	Mt Defiance, OR	159.4500	136.5	151.3250	136.5
Hopkins	Hopkins Hill	159.1875	136.5	151.1675	136.5

Kalama	Green Mtn (Kalama)	159.2475	136.5	151.1975	136.5
Larch	Larch Mtn	159.4275	136.5	151.3850	136.5
Mitchell	Mt Mitchell	159.2025	136.5	151.2125	136.5
Naselle	Naselle Ridge	159.1275	186.2	151.3775	186.2
Nicolai	Mt Nicolai, OR	159.3300	136.5	151.2500	136.5
Signal Peak	Flattop Mtn	159.3000	162.2	151.2350	136.5
State Adams	Larch Mtn	159.4200	D031	151.2950	D031
State Clark	Green Mtn (Kalama)	159.3375	D156	151.2725	D156
State Cowlitz	Mt Defiance, OR	159.4200	D031	151.2950	D031
State Gorge	Naselle Ridge	159.4200	D632	151.2950	D632
State Pacific	Burley Mtn	159.4200	D464	151.2950	D464
State Packwood	White Pass	159.4200	D732	151.2950	D732
State Rimrock	Signal Peak	159.4200	D734	151.2950	D734
State St Helens	Flattop Mtn	159.4200	D703	151.2950	D703
DNR Southeast Region	509 884-3473 Dispatch				
Badger	Badger Mtn	159.4425	127.3	151.2125	127.3
Chelan	Chelan Butte	159.2250	156.7	151.4750	156.7
Cleman	Mt Cleman	159.3450	114.8	151.4675	114.8
SE Defiance	Mt Defiance, OR	159.3750	127.3	151.3700	127.3
Grayback	Grayback Mtn	159.3000	103.5	151.2575	103.5
Juniper	Juniper Point	159.3525	114.8	151.2500	114.8
Naneum	Wenatchee Mtn	159.3225	D023	151.3625	D023
Peoh	Peoh Point	159.3675	141.3	151.4450	141.3
Sedge	Sedge Ridge	159.2550	107.2	151.1825	107.2
Whiskey	Whiskey Dick Mtn	151.4000	156.7	159.2850	156.7
Beezley	Beezley Hill	159.3825	162.2	151.1975	127.3
Big Butte	Big Butte	159.3750	162.2	151.2350	127.3
Joe Butte	Jump Off Joe Butte	159.3375	162.2	151.4675	127.3
Lookout	Lookout Mtn	159.4575	162.2	151.3925	127.3
Steptoe	Steptoe Butte	159.3075	162.2	151.2275	127.3
State Alpentel	Dodge Ridge	159.4200	D162	151.2950	D162
State Asotin	Big Butte	159.4200	D365	151.2950	D365
State Badger	Badger Mtn	159.4200	D606	151.2950	D606
State Cle Elum	Peoh Point	159.4200	D115	151.2950	D115
State Colfax	Steptoe Butte	159.4200	D627	151.2950	D627
State Dayton	Thorn Point	159.4200	D223	151.2950	D223
State Grant	Beezley Hill	159.4200	D431	151.2950	D431
State Hanford	Lookout Mtn	159.4200	D065	151.2950	D065
State Lyons Ferry	Palouse Well	159.4200	D226	151.2950	D226
State Manson	Chelan Butte	159.4200	D346	151.2950	D346
State Maryhill	Juniper Point	159.4200	D131	151.2950	D131

State Naches	Mt Cleman	159.4200	D503	151.2950	D503
State Pasco	Jump Off Joe Butte	159.4200	D271	151.2950	D271
State Priest	Saddle Mtn	159.4200	D723	151.2950	D723
DNR South Puget Region	360 802-7080 Dispatch				
Belfair	Gold Mtn	159.2550	114.8	151.2050	114.8
Capitol	Capitol Peak	159.2250	136.5	151.4300	173.8
Carbon	Cowling Ridge	159.3600	D072	151.3700	D065
Eatonville	Puyallup Ridge	159.3075	114.8	151.2275	114.8
Enumclaw	Grass Mtn	159.4575	141.3	151.2575	141.3
North Bend	Rattlesnake Mtn	159.2925	114.8	151.3925	114.8
Shelton	North Mtn	159.3150	127.3	151.1750	127.3
State Issaquah	Rattlesnake Mtn	159.4200	D532	151.2950	D532
State Kitsap	Gold Mtn	159.4200	D315	151.2950	D315
State Rainier	Puyallup Ridge	159.4200	D743	151.2950	D743
State Thurston	Capitol Peak	159.2850	D244	151.2725	D244

Transportable/Mobile Repeaters

Name/Agency	24 Hr. #	Band	Qty
Dept of Natural Resources	360 902-1480 Ext 0	VHF High	10

Radio Cache

Name/Agency	24 Hr. #	Make/Mode (Qty)	Band
Dept of Natural Resources	360 902-1480 Ext 0	Bendix King – BKR5000 (48)	VHF High

Interoperable Channels Frequencies

VHF/UHF Interoperable Infrastructure

Name	Primary Use	Frequency			
		Rx	RX Tone	Tx	Tx Tone
DNR Common	Tactical Coordination / Interop	151.4150	103.5	151.4150	103.5
DNR TAC 1	Tactical	151.3100	103.5	151.3100	103.5
DNR TAC 2	Tactical	151.3400	103.5	151.3400	103.5
DNR A/G 1	Air to Ground	159.2700	103.5	159.2700	103.5
DNR A/G 2	Air to Ground	151.2875	103.5	151.2875	103.5
DNR A/G 3	Air to Ground	156.0225	103.5	156.0225	103.5
Repeater 1	Portable Repeater / Tone Assigned Per Incident	159.4125	NA	151.4450	NA
Repeater 2	Portable Repeater / Tone Assigned Per Incident	159.4275	NA	151.2725	NA
Repeater 3	Portable Repeater / Tone Assigned Per Incident	159.2400	NA	151.2650	NA
Repeater 4	Portable Repeater / Tone Assigned Per Incident	159.3300	NA	151.1675	NA
Repeater 5	Portable Repeater / Tone Assigned Per Incident	159.3750	NA	151.3250	NA
Note: Additional Incident Frequencies Available with Specific Coordination Considerations					

Washington State Department of Transportation

Agency:	Washington State Department of Transportation
Contact Name:	Dongho Chang
Title:	STATE TRAFFIC ENGINEER/DIR OF TRAFFIC OPS • TRAFFIC OPERATIONS
Address:	310 Maple Park Ave SE, Olympia WA. 98501
Office Phone:	360 705 7280
24/7 Phone:	206 440 4491
E-Mail:	dongho.chang@wsdot.wa.gov

WSDOT Secondary Contact

Agency:	Washington State Department of Transportation
Contact Name:	Tim McDowell
Title:	ITS Communications & Wireless Manager
Address:	7345 Linderson Way SW, Tumwater WA. 98501
Office Phone:	360 705 7028
24/7 Phone:	360 280 9174
E-Mail:	Tim.mcdowell@wsdot.wa.gov

Local Traffic Management Centers (non 911)/Emergency Management

Agency	Location	24 Hour #
WSDOT Emergency Management	Olympia WA	360 705 6977
WSDOT Northwest Region Dispatch	Shoreline WA	360 440 4490
WSDOT Northcentral Region Dispatch	Wenatchee WA	509 667 2802
WSDOT Olympic Region Dispatch	Tacoma WA	253 538 3300
WSDOT Southwest Region Dispatch	Vancouver WA	360 905 2269
WSDOT South Central Region Dispatch	Yakima WA	509 577 1990
WSDOT Eastern Region Dispatch	Spokane WA	206 515 3456

Shared Systems

System Name	Agency	Freq	24 Hr. #
WSDOT 700 LMR	WSDOT	L3Harris 700/800 MHZ Phase 2 trunked	360 280 9174

700/800 MHz Interoperable Infrastructure

Name	Primary Use/Locations	Frequency			
		Rx	Rx NAC	Tx	Tx NAC
7TAC71	North Point/Forks	773.10625	\$F7E	803.10625	\$293
7TAC71	Mt Constitution/Orcas Island	773.10625	\$F7E	803.10625	\$293
7TAC71	Neilton Point/Neilton	773.10625	\$F7E	803.10625	\$293
7TAC71	Stafford Creek/Hoquiam	773.10625	\$F7E	803.10625	\$293
7TAC71	Naselle/Naselle	773.10625	\$F7E	803.10625	\$293
7TAC71	Buckhorn/Winlock	773.10625	\$F7E	803.10625	\$293
7TAC71	Cape Horn/SR14 Cape Horn overlook	773.10625	\$F7E	803.10625	\$293

Name	Primary Use/Locations	Frequency			
		Rx	Rx NAC	Tx	Tx NAC
7TAC71	White Pass/SR12 White pass	773.10625	\$F7E	803.10625	\$293
7TAC71	Bickleton/SR97 Northeast of Goldendale	773.10625	\$F7E	803.10625	\$293
7TAC71	Manastash/Ellensburg	773.10625	\$F7E	803.10625	\$293
7TAC71	Dodge Ridge/I90 Snoqualmie Pass	773.10625	\$F7E	803.10625	\$293
7TAC71	Skline/Stevens Pass	773.10625	\$F7E	803.10625	\$293
7TAC71	Babcock/New Halem	773.10625	\$F7E	803.10625	\$293
7TAC71	McClure/Twisp	773.10625	\$F7E	803.10625	\$293
7TAC71	Burch/Wenatchee	773.10625	\$F7E	803.10625	\$293
7TAC71	Bodie/Waconda	773.10625	\$F7E	803.10625	\$293
7TAC71	Tunk/Tonasket	773.10625	\$F7E	803.10625	\$293
7TAC71	Electric City Ridge/Electric City	773.10625	\$F7E	803.10625	\$293
7TAC71	Bisbee/Kette Falls	773.10625	\$F7E	803.10625	\$293
7TAC71	Magnuson/Airway Heights	773.10625	\$F7E	803.10625	\$293
7TAC71	Lind/Lind	773.10625	\$F7E	803.10625	\$293
7TAC71	Hansens Ranch/Dixie	773.10625	\$F7E	803.10625	\$293
7TAC72	Sumas/Nooksack	773.10625	\$F7E	803.10625	\$293
7TAC72	Concrete/Concrete	773.60625	\$F7E	803.60625	\$293
7TAC72	Ross Dam/Ross Dam Trail Head	773.60625	\$F7E	803.60625	\$293
7TAC72	Round Mtn/Nason Creek	773.60625	\$F7E	803.60625	\$293
7TAC72	Goat/Pateros	773.60625	\$F7E	803.60625	\$293
7TAC72	Pilot Rock/Coulee City	773.60625	\$F7E	803.60625	\$293
7TAC72	Jones Bay/Wilbur	773.60625	\$F7E	803.60625	\$293
7TAC72	Stampede Pass/Easton	773.60625	\$F7E	803.60625	\$293
7TAC72	Lookout/Selah	773.60625	\$F7E	803.60625	\$293
7TAC72	Hopkins Hill/Morton	773.60625	\$F7E	803.60625	\$293
7TAC72	Haystack/Maryhill	773.60625	\$F7E	803.60625	\$293
7TAC72	Kahlotus/Kahlotus	773.60625	\$F7E	803.60625	\$293
7TAC75	Jackass Butte/Okanogan	773.75625	\$F7E	803.75625	\$293
7TAC75	Yakima Ridge/Yakima	773.75625	\$F7E	803.75625	\$293
7TAC75	Steptoe Butte/Steptoe	773.75625	\$F7E	803.75625	\$293
7TAC75	Alpowa Summit/Mentor	773.75625	\$F7E	803.75625	\$293

Washington State Patrol

Agency Communications POC Information

Agency:	Washington State Patrol
Contact Name:	Steve Brown
Title:	Electronic Services Division Commander
Address:	106 11th Ave SW, Olympia 98501
Office Phone:	360 534-0601
24/7 Phone:	360 970-0995
E-Mail:	steven.brown@wsp.wa.gov

Agency Dispatch Center

Agency:	Washington State Patrol
Contact Name:	Vanessa Barnes
Title:	Communications Division Commander
Address:	106 11th Ave SW, Olympia 98501
Office Phone:	360 704-2282
24/7 Phone:	360 790-0127
E-Mail:	vanessa.barnes@wsp.wa.gov

Local Dispatch Centers/Emergency Management

Agency	Location	24 Hour #
WSP - Tacoma	2502 112 th Street East, Tacoma WA 98445-5104	253 538-3150
WSP - Bellevue	2803 156 Ave SE, Bellevue WA 98007-6523	425 401-7798
WSP - Yakima	2715 Rudkin Rd, Union Gap WA 98903	509 249-6700
WSP - Spokane	6403 W Rowand Rd Spokane WA 99224	509 227-6650
WSP - Vancouver	11018 NE 51 st Circle, Vancouver WA 98682	360 449-7950
WSP - Marysville	2700 116 th St NE, Marysville, WA 98271-9425	360 654-1204
WSP - Bremerton	4811 Werner Rd, Bremerton WA 98312-3333	360 473-0319

Dispatch Service Agreements

Agency
Burlington Northern Santa Fe Railway Police
Muckleshoot Indian Tribe – Wildlife Department
U.S. Army Corps of Engineers - Seattle
U.S. Army Corps of Engineers – Walla Walla District
U.S. Bureau of Land Management
U.S. Dept. of Agriculture
U.S. Dept of Dept. of Homeland Security – Federal Protective Services
U.S. Fish & Wildlife Service
U.S. Marshals Service

WA State Dept. of Corrections
WA State Dept. of Fish & Wildlife
WA State Dept. of Natural Resources
WA State Gambling Commission
WA State Liquor & Cannabis Board
WA State Dept. Parks & Recreation

Shared Systems

System Name	Agency	Freq	24 Hr. #
IWIN	Federal Bureau of Investigations (FBI)	800 MHz SmartZone V4.1	425 487-4621
WSDOT	Washington State Department of Transportation	Harris P25 Phase 2 700MHz Trunked	360 280-9174
Clark County 800 MHz Radio System	CRESA	800 MHz Trunked	360 696-4461
Pierce County	Pierce County	700MHz Trunking system	
Puget Sound Emergency Radio Network	PSERN	800 MHz (Digital Trunked)	425 736-9161
Sno911 Wireless	Snohomish County 911	Motorola ASTRO25 800 MHz trunked with VHF/UHF IO	425 407-3999
Thurston County Emergency Radio Network	TCOMM911	Motorola Astro (Phase 2) 700 MHz Trunked with VHF Interop Channels	360 704-2740
Tacoma	City of Tacoma	Motorola trunking system P25	253 328-0407

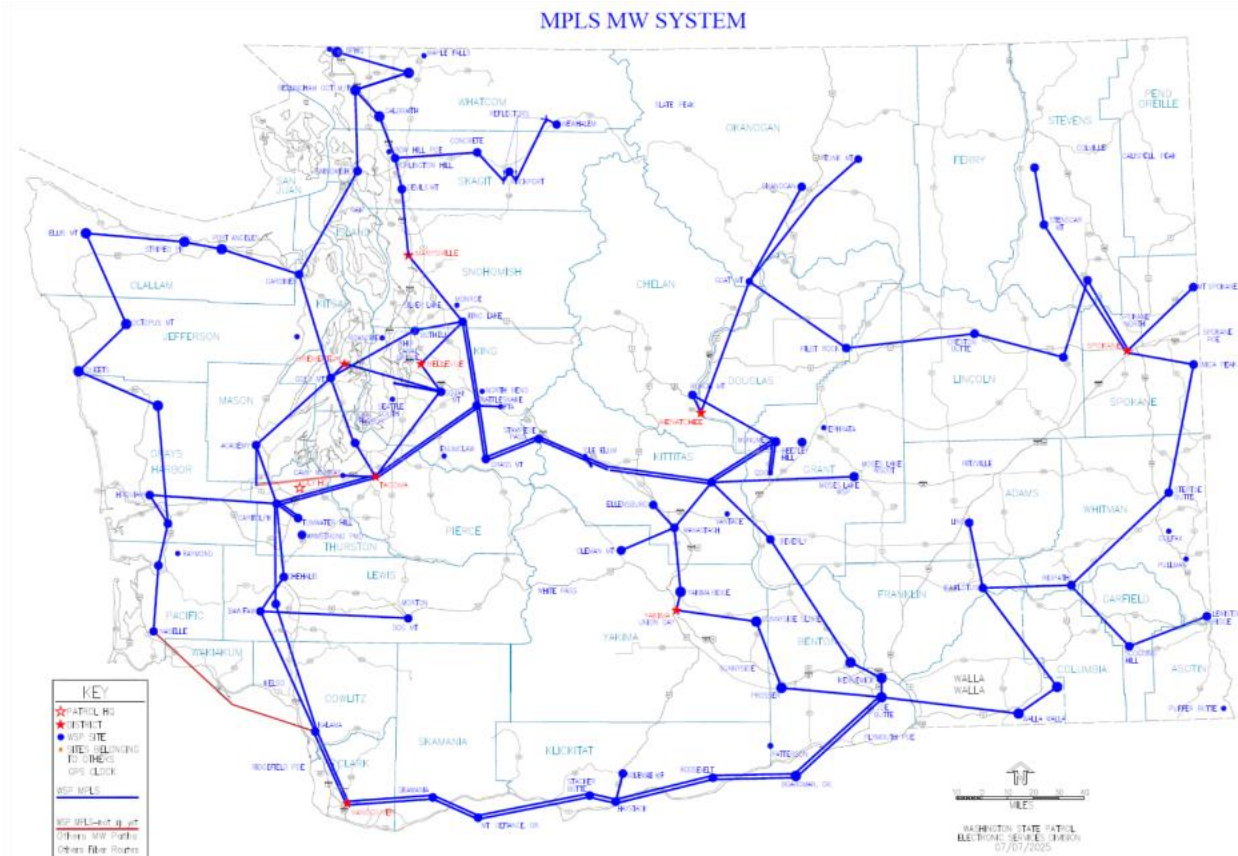
Interoperable Channels Frequencies

VHF/UHF Interoperable Infrastructure

Name	Primary Use	Rx	Tx
VCALL 10	Calling	155.7525	155.7525
VTAC 11	Tactical	151.1375	151.1375
VTAC 12	Tactical	154.4525	154.4525
VTAC 13	Tactical	158.7375	158.7375
VTAC 14	Tactical	159.4725	159.4725
VSAR16	Search And Rescue	155.1600	155.1600
SAR 2	Search And Rescue	155.2425	155.2425
SAR 3	Search And Rescue	155.3025	155.3025
STATE OPS1	WA State Operations	852.5375	852.5375
STATE OPS2	WA State Operations	852.5625	852.5625
STATE OPS3	WA State Operations	852.5875	852.5875
STATE OPS4	WA State Operations	852.6125	852.6125

STATE OPS5	WA State Operations	852.6375	852.6375
8CALL90	Calling	851.0125	806.0125
8CALL90D	Calling	851.0125	851.0125
8TAC91	Tactical	851.5125	806.5125
8TAC91D	Tactical	851.5125	851.5125
8TAC92	Tactical	852.0125	807.0125
8TAC92D	Tactical	852.0125	852.0125
8TAC93	Tactical	852.5125	807.5125
8TAC93D	Tactical	852.5125	852.5125
8TAC94	Tactical	853.0125	808.0125
8TAC94D	Tactical	853.0125	853.0125
7CALL50	Calling	769.24375	799.24375
7CALL70	Calling	773.25625	803.25625
7TAC71	Tactical	773.10625	803.10625
7TAC71D	Tactical	773.10625	773.10625
7TAC72	Tactical	773.60625	803.60625
7TAC72D	Tactical	773.60625	773.60625
7LAW61	Law Enforcement	770.39375	800.39375
7LAW61D	Law Enforcement	770.39375	770.39375
7LAW62	Law Enforcement	770.49375	800.49375
7LAW62D	Law Enforcement	770.49375	770.49375
7TAC75	Tactical	773.75625	803.75625
7TAC75D	Tactical	773.75625	773.75625
7LAW81	Law Enforcement	774.00625	804.00625
7LAW81D	Law Enforcement	774.00625	774.00625
7LAW82	Law Enforcement	774.35625	804.35625
7LAW82D	Law Enforcement	774.35625	774.35625
Note: 90+ Interagency RF sharing agreements exist for the purpose of mutual aid. More information is available at esdrfmou@wsp.wa.gov			

700/800 MHz Interoperable Infrastructure



Microwave Backhaul Path	Counties	Bandwidth	Frequency Band
Academy: Capitol Peak	Mason: Thurston	150Mbps	6 GHz
Academy: Gold	Mason: Kitsap	150Mbps	6 GHz
Academy: Maxwell	Mason: Thurston	150Mbps	11 GHz
Academy: Capitol Peak	Mason: Thurston	150Mbps	6 GHz
Academy: Gold	Mason: Kitsap	8Mbps	6 GHz
Academy: Maxwell	Mason: Thurston	150Mbps	11 GHz
Bellingham: Galbraith	Whatcom: Whatcom	150Mbps	6 GHz
Bellingham: Sumas	Whatcom: Whatcom	150Mbps	6 GHz
Bellingham: Swinomish	Whatcom: Skagit	150Mbps	6 GHz
Bellevue: King Lake	King: Snohomish	150Mbps	6 GHz
Bellevue: Squak Mt	King: King	150Mbps	11 GHz
Bellevue: VA Hospital	King: King	50Mbps	11 GHz
Beverly: Rattlesnake SO	Grant: Benton	150Mbps	11 GHz
Beverly: Whiskey Ridge	Grant: Kittitas	150Mbps	11 GHz
Blaine: Sumas	Whatcom: Whatcom	150Mbps	6 GHz
Bothell: Gold	Snohomish: Kitsap	150Mbps	6 GHz
Bothell: King Lake	Snohomish: Snohomish	150Mbps	11 GHz
Boardman: Joe Butte	Morrow OR: Benton	150Mbps	11 GHz

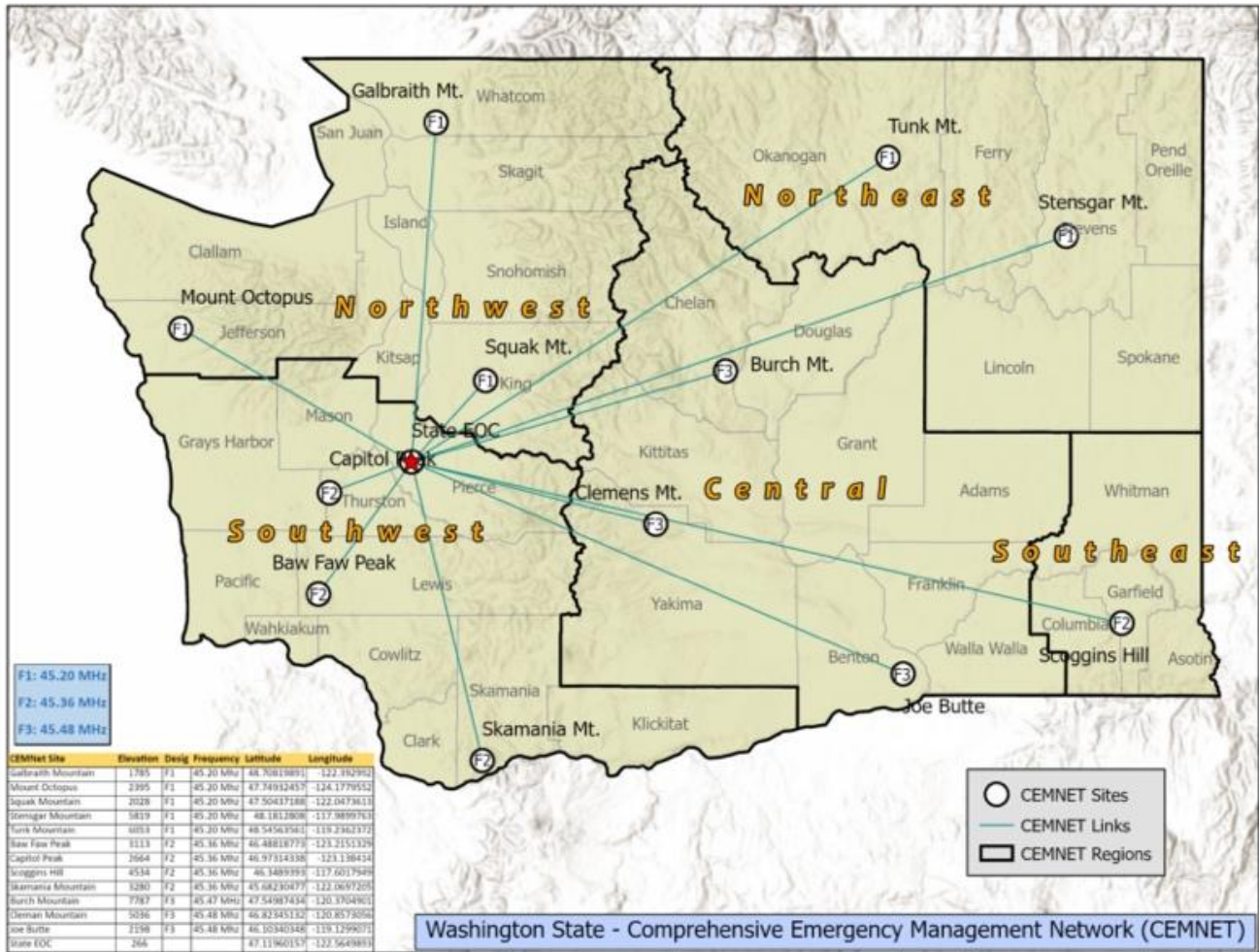
Boardman: Joe Butte	Morrow OR: Benton	150Mbps	11 GHz
Boardman: Roosevelt	Morrow OR: Klickitat	150Mbps	11 GHz
Boardman: Roosevelt	Morrow OR: Klickitat	150Mbps	11 GHz
Bremerton: Gold	Kitsap: Kitsap	150Mbps	11 GHz
Bremerton: Squak Mt	Kitsap: King	150Mbps	6 GHz
Buckhorn: Capitol Peak	Lewis: Thurston	150Mbps	6 GHz
Buckhorn: Kalama	Lewis: Cowlitz	150Mbps	6 GHz
Burch: Monument Hill	Chelan: Grant	150Mbps	6 GHz
Burch: Wenatchee	Chelan: Chelan	150Mbps	11 GHz
Burlington Hill: Concrete	Skagit: Skagit	150Mbps	6 GHz
Burlington Hill: Devils Mt	Skagit: Skagit	150Mbps	11 GHz
Burlington Hill: Galbraith	Skagit: Whatcom	150Mbps	6 GHz
Camp Murray: Maxwell	Pierce: Thurston	150Mbps	6 GHz
Camp Murray: Tacoma	Pierce: Pierce	150Mbps	11 GHz
Capitol Peak: Chehalis	Thurston: Lewis	150Mbps	6 GHz
Capitol Peak: Hoquiam	Thurston: Grays Harbor	150Mbps	6 GHz
Capitol Peak: Tacoma A	Thurston: Pierce	150Mbps	6 GHz
Capitol Peak: Tacoma B	Thurston: Pierce	150Mbps	6 GHz
Capitol Peak: Tumwater Hill	Thurston: Thurston	150Mbps	11 GHz
Capitol Peak: Tumwater Hill-2	Thurston: Thurston	150Mbps	11 GHz
Clemans: Manastash	Yakima: Kittitas	50Mbps	6 GHz
Concrete: Burlington Hill	Skagit: Skagit	150Mbps	6 GHz
Concrete: Rockport	Skagit: Skagit	50Mbps	6 GHz
Cosmopolis: Holy Cross	Grays Harbor: Pacific	50Mbps	11 GHz
Cosmopolis: Hoquiam	Grays Harbor: Grays Harbor	150Mbps	11 GHz
Cosmopolis: Neilton	Grays Harbor: Grays Harbor	150Mbps	6 GHz
Creston Butte: Magnuson Butte	Lincoln: Lincoln	150Mbps	11 GHz
Creston Butte: Pilot Rock	Lincoln: Douglas	150Mbps	11 GHz
Devils MT: Marysville	Skagit: Snohomish	150Mbps	11 GHz
Ellensburg: Manastash	Kittitas: Kittitas	50Mbps	6 GHz
Ellis: Octopus	Clallam: Clallam	150Mbps	6 GHz
Ellis: Striped Peak	Clallam: Clallam	150Mbps	6 GHz
Goldendale: Haystack	Klickitat: Klickitat	150Mbps	11 GHz
Goat: Pilot Rock	Okanogan: Douglas	150Mbps	6 GHz
Goat: Pitcher Hill	Okanogan: Okanogan	50Mbps	6 GHz
Goat: Wenatchee	Okanogan: Chelan	150Mbps	6 GHz
Gold: Gardiner	Kitsap: Jefferson	150Mbps	6 GHz
Gold: LESA	Kitsap: Pierce	150Mbps	6 GHz
Grass: Rattlesnake NB	King: King	150Mbps	6 GHz
Grass: Rattlesnake NB	King: King	150Mbps	6 GHz

Grass: Stampede	King: Kittitas	150Mbps	11 GHz
Grass: Stampede	King: Kittitas	150Mbps	11 GHz
Gardiner: Port Angeles	Jefferson: Clallam	150Mbps	11 GHz
Gardiner: Swinomish	Jefferson: Skagit	150Mbps	6 GHz
Hansens Ranch: Kahlotus	Walla Walla: Franklin	150Mbps	11 GHz
Hansens Ranch: Walla Walla	Walla Walla: Walla Walla	150Mbps	11 GHz
Haystack: Roosevelt	Klickitat: Klickitat	150Mbps	11 GHz
Haystack: Roosevelt	Klickitat: Klickitat	150Mbps	11 GHz
Haystack: Stacker Butte	Klickitat: Klickitat	150Mbps	11 GHz
Haystack: Stacker Butte	Klickitat: Klickitat	150Mbps	11 GHz
Holy Cross: Naselle	Pacific: Pacific	50Mbps	11 GHz
Joe Butte: Kennewick	Benton: Benton	150Mbps	11 GHz
Joe Butte: Prosser Butte	Benton: Benton	150Mbps	11 GHz
Joe Butte: Walla Walla	Benton: Walla Walla	150Mbps	11 GHz
Kahlotus: Lind	Franklin: Adams	50Mbps	6 GHz
Kahlotus: Ridpath	Franklin: Whitman	150Mbps	6 GHz
Kennewick: Rattlesnake SO	Benton: Benton	150Mbps	11 GHz
King Lake: Marysville	Snohomish: Snohomish	150Mbps	6 GHz
King Lake: Rattlesnake NB A	Snohomish: King	150Mbps	6 GHz
King Lake: Rattlesnake NB-BR	Snohomish: King	150Mbps	6 GHz
Kalama: Vancouver A	Cowlitz: Clark	150Mbps	11 GHz
Kalama: Vancouver B	Cowlitz: Clark	150Mbps	11 GHz
LESA: Tacoma	Pierce: Pierce	150Mbps	11 GHz
Lewiston Ridge: Scoggins Hill	Asotin: Garfield	50Mbps	6 GHz
Magnuson Butte: Scoop	Lincoln: Spokane	150Mbps	6 GHz
Manastash: Whiskey Ridge	Kittitas: Kittitas	150Mbps	11 GHz
Manastash: Yakima Ridge	Kittitas: Yakima	150Mbps	6 GHz
Mica Peak: Spokane	Spokane: Spokane	150Mbps	11 GHz
Mica Peak: Steptoe Butte	Spokane: Whitman	150Mbps	6 GHz
Monument Hill: Quincy Data Center	Grant: Grant	150Mbps	11 GHz
Monument Hill: Quincy Data Center	Grant: Grant	150Mbps	11 GHz
Monument Hill: Whiskey Ridge	Grant: Kittitas	150Mbps	6 GHz
Monument Hill: Whiskey Ridge	Grant: Kittitas	150Mbps	6 GHz
Monumental Mt: Stensgar	Stevens: Stevens	150Mbps	6 GHz
Moses Lake: Whiskey Ridge	Grant: Kittitas	50Mbps	6 GHz
Mt Defiance: Skamania	Hood River OR: Skamania	150Mbps	11 GHz
Mt Defiance: Skamania	Hood River OR: Skamania	150Mbps	11 GHz
Mt Defiance: Stacker Butte	Hood River OR: Klickitat	150Mbps	11 GHz
Mt Defiance: Stacker Butte	Hood River OR: Klickitat	150Mbps	11 GHz
Mt Spokane: Spokane	Spokane: Spokane	150Mbps	6 GHz

North Bend FTA: Rattlesnake NB	King: King	150Mbps	11 GHz
Neilton: Queets	Grays Harbor: Jefferson	150Mbps	6 GHz
Newhalem: Rockport	Whatcom: Skagit	50Mbps	6 GHz
Octopus: Queets	Clallam: Jefferson	150Mbps	6 GHz
Okanogan: Goat	Okanogan: Okanogan	50Mbps	6 GHz
Pitcher Hill: Tunk Mt	Okanogan: Okanogan	50Mbps	11 GHz
Prosser Butte: Sunnyside Slope	Benton: Yakima	150Mbps	11 GHz
Port Angeles: Striped Peak	Clallam: Clallam	150Mbps	11 GHz
Rattlesnake Bascome	King: Pierce	150Mbps	6 GHz
Rattlesnake NB: Tacoma-BR	King: Pierce	150Mbps	6 GHz
Ridpath: Scoggins Hill	Whitman: Garfield	50Mbps	6 GHz
Ridpath: Steptoe Butte	Whitman: Whitman	150Mbps	6 GHz
Scoop: Spokane	Spokane: Spokane	150Mbps	6 GHz
Skamania: Vancouver A	Skamania: Clark	150Mbps	11 GHz
Skamania: Vancouver B	Skamania: Clark	150Mbps	11 GHz
Sky Meadows: Stampede	Kittitas: Kittitas	150Mbps	11 GHz
Sky Meadows: Stampede	Kittitas: Kittitas	150Mbps	11 GHz
Sky Meadows: Whiskey Ridge	Kittitas: Kittitas	150Mbps	6 GHz
Sky Meadows: Whiskey Ridge	Kittitas: Kittitas	150Mbps	6 GHz
Spokane: Stensgar	Spokane: Stevens	150Mbps	6 GHz
Squak MT: Tacoma	King: Pierce	150Mbps	6 GHz
Sunnyside Slope: Yakima	Yakima: Yakima	150Mbps	6 GHz
Yakima: Yakima Ridge	Yakima: Yakima	150Mbps	11 GHz
Yakima Ridge: Manastash	Yakima: Kittitas	150Mbps	6 GHz

Washington State Asset Location Maps (All Regions 1 thru 9)

Washington State CEMNET



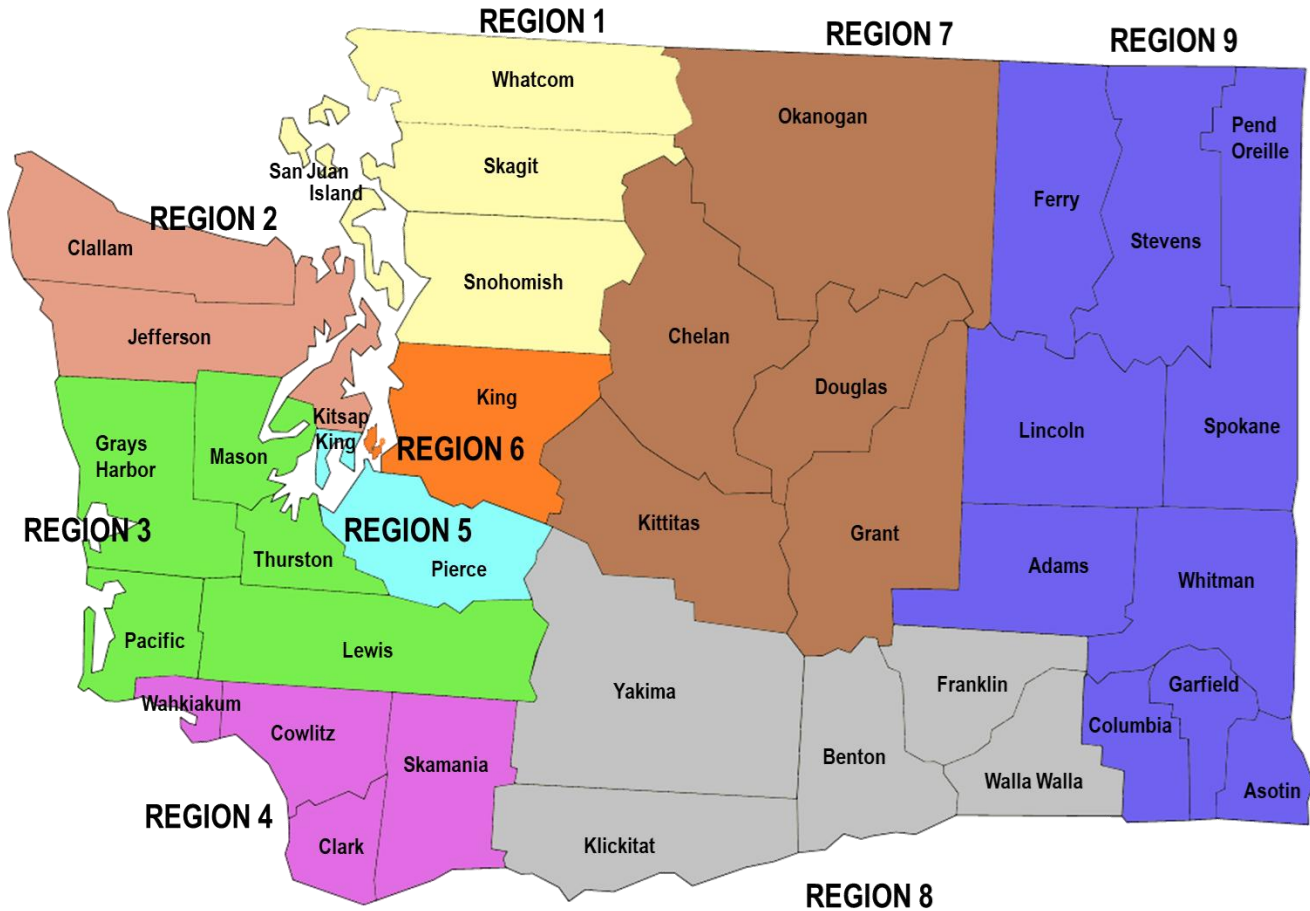
12 sites operating on 3 VHF low-band frequencies, Base stations controlled from State EOC through WSP microwave system.

CEMNET REGION AND CHANNEL ASSIGNMENTS

NORTHWEST (F1-45.20 MHz)	SOUTHWEST (F2-45.36 MHz)	CENTRAL (F3-45.48 MHz)	NORTHEAST (F1-45.20 MHz)	SOUTHEAST (F2-45.36 MHz)
Clallam Co.	Clark Co.	Adams Co.	Ferry Co.	Asotin Co.
Island Co.	Cowlitz Co.	Benton Co.	Lincoln Co.	Columbia Co.
Jefferson Co.	Grays Harbor Co.	Chelan Co.	Okanagan Co.	Garfield Co.
King Co.	Lewis Co.	Douglas Co.	Pend Orielle Co.	Whitman Co.
Kitsap Co.	Mason Co.	Franklin Co.	Spokane Co.	
San Juan Co.	Pacific Co.	Grant Co.	Stevens Co.	
Skagit Co.	Pierce Co.	Kittitas Co.		
Snohomish Co.	Skamania Co.	Klickitat Co.		
Whatcom Co.	Thurston Co.	Yakima Co.		
	Wahkiakum Co.	Walla Walla Co.		
Auburn	Lacey			
Bellevue	Puyallup			
Kent	Shelton			
Kirkland	Tacoma			
Mercer Island				
Port Angeles				
Redmond				
Seattle				
Snoqualmie				

Local jurisdictions listed above are authorized to use the assigned region channel for local operations. Each local license holder is authorized to operate up to five (5) mobiles.

Washington State Counties and Regions



Adams County

Agency:	Adams County 911
Contact Name:	Melissa Shepherd
Title:	911 Coordinator
Address:	210 West Broadway, Ritzville, WA 99169
Office Phone:	509 659-3323
24/7 Phone:	509 659-1122
E-Mail:	melissa@co.adams.wa.gov

Agency:	Adams County Emergency Management
Contact Name:	Sandi Duffey
Title:	Emergency Management Director
Address:	2069 W Hwy 26, Othello, WA 99344
Office Phone:	509 659-3337
24/7 Phone:	509 659-1122

E-Mail: sandid@co.adams.wa.gov

Local Dispatch Centers/Emergency Management

Agency	Location	24 Hour #
Adams County Communications Center	210 WEST BROADWAY AVENUE, RITZVILLE 99169	

Repeaters

Fixed Repeaters

Name/Agency	Frequency			
	Rx	Rx Tone	Tx	Tx Tone
ACFD 2 – Adams 2 Dispatch	158.9700	77.0		
ACFD 5 – Adams 5	154.1900	77.0		
ACFD Tac – Fire Tactical	154.0100	77.0		
ACSO L1 Ritz – ACSO Law 1 Ritzville Dispatch	158.7600	\$100 NAC		
ACSO L2 Othello – ACSO Law 2 Othello Dispatch	158.8050	\$114 NAC		
Othello Police – City of Othello Police	155.5950	\$A21 NAC		
Adams Co Roads – Adams County Road District	156.2400	173.8		

Auxiliary Communications (AUXCOMM) Frequencies

Ch Config	Name	Primary Use	Frequency		Tone
			Rx	Tx	Rx/Tx
2 MTR	WD7C Ritzville	Ritzville	146.7200	146.1200	CSQ
70 CM	W7UPS Lind	Lind	448.7000	443.7000	123.0

Asotin County

Agency:	Asotin County Department of Emergency Management
Contact Name:	Nick Bacon
Title:	Emergency Services Director
Address:	PO Box 250 Asotin WA 99402
Office Phone:	509 243-2088
24/7 Phone:	509 780-2782
E-Mail:	nbacon@asotincountywa.gov

Local Dispatch Centers/Emergency Management

Agency	Location	24 Hour #
WHITCOM – See Whitman County		
Asotin County Department of Emergency Management	95 2 nd St Asotin WA 99402	509 780-2782

Non-Government Contact Information

Agency	24 Hr. #
American Red Cross	833 583-3111

Repeaters*Fixed Repeaters*

Name/Agency	24 Hr. #	Frequency			
		Rx	Rx Tone	Tx	Tx Tone
ACSO – Stout	509 780-2782	155.4150	173.8	157.5000	032
ACSO – West Asotin	509 780-2782	155.4150	173.8	157.5000	173.8
ACSO – Puffer Butte	509 780-2782	155.4150	173.8	157.5000	026
ACSO – Big Butte	509 780-2782	155.4150	173.8	157.5000	054
ACFD#1 - Stout	509 780-2782	154.2050	192.8	159.1800	94.8
ACFD#1 – West Asotin	509 780-2782	154.2050	192.8	159.1800	110.9
ACFD#1 – Mt. Wilson	509 780-2782	154.2050	192.8	159.1800	74.4
Asotin Grade Tactical	509 780-2782	154.0250	151.4	150.8040	151.4

Transportable/Mobile Repeaters

Name/Agency	24 Hr. #	Band	Qty
Asotin County DEM	509 780-2782	VHF	1

Radio Cache

Name/Agency	24 Hr. #	Make/Mode (Qty)	Band
Asotin County DEM	509 780-2782	BK DPH (10)	VHF

Benton County

Agency:	Benton County Emergency Services
Contact Name:	Jay Atwood
Title:	Executive Director
Address:	651 Truman Ave, Richland WA 99352
Office Phone:	509 460-5027
24/7 Phone:	509 537-7755
E-Mail:	j.atwood@bces.wa.gov

Agency:	Benton County Emergency Management
Contact Name:	Deanna Davis
Title:	Emergency Manager
Address:	651 Truman Ave, Richland WA 99352
Office Phone:	509 628.8092
24/7 Phone:	509 380.4522
E-Mail:	d.davis@bces.wa.gov

Agency:	Southeast Communications Center (SECOMM)
Contact Name:	Gwen Stanley
Title:	SECOMM Operations Manager

Address:	651 Truman Ave, Richland WA 99352
Office Phone:	509 628-0333 – Non-Emergency Dispatch
24/7 Phone:	509 579-6014
E-Mail:	g.stanley@bces.wa.gov

Local Dispatch Centers/Emergency Management

Agency	Location	24 Hour #
Southeast Communications Center (SECOMM)	651 Truman Ave, Richland, WA 99352	509 628-0333

Shared Systems

System Name	Agency	Freq	24 Hr. #
BCES Communications System	Benton County Emergency Services (BCES)	800/VHF	509 628-0333

Repeaters

Fixed Repeaters

Name/Agency	24 Hr. #	Frequency			
		Rx	Rx Tone	Tx	Tx Tone
VTAC33		159.4725	CSQ	151.1375	136.5

Radio Cache

Name/Agency	24 Hr. #	Make/Mode (Qty)	Band
Benton Co Emergency Services (Jay Atwood)	509 537-7755	Motorola N50 (12)	800 MHz

Interoperable Channels Frequencies

VHF/UHF Interoperable Infrastructure

Name	Primary Use	Frequency			
		Rx	RX Tone	Tx	Tx Tone
LERN	Mutual Aid	155.3700	CSQ	155.3700	100.0
REDNET	Mutual Aid	153.8300	CSQ	153.8300	156.7

700/800 MHz Interoperable Infrastructure

Name	Primary Use/Locations	Frequency			
		Rx	RX Tone	Tx	Tx Tone
8TAC91	Tri-Cities	851.5125	156.7	806.5125	156.7
8TAC92	Plymouth	852.0125	156.7	807.0125	156.7
8TAC94	Benton & Franklin Counties	853.0125	156.7	808.0125	156.7

Clallam County

Agency:	PenCom – Peninsula Communications
Contact Name:	Karl Hatton
Title:	Deputy Director
Address:	321 E 5 th St. Port Angeles, WA 98362
Office Phone:	360 417 4911

24/7 Phone:	360 461 0340
E-Mail:	khatton@pencom.us

Agency:	Clallam County Emergency Management
Contact Name:	Justine Chorley
Title:	Emergency Management Program Coordinator
Address:	223 E 4 th St, Port Angeles, WA 98362
Office Phone:	360 417 2525
24/7 Phone:	360 809 4691
E-Mail:	Justine.chorley@clallamcountywa.gov

Local Dispatch Centers/Emergency Management

Agency	Location	24 Hour #
PenCom	321 E 5 th St. Port Angeles, WA 98362	360 452 4545
Clallam County Emergency Management	223 E 4 th St. Port Angeles, WA 98362	

Non-Government Contact Information

Agency	24 Hr. #
American Red Cross	833 583 3111
Peninsula Behavioral Health	360 457 0431
Olympic Medical Center	360 417 7000
Life Flight Network	800 232 0911
Serenity House Shelter	360 452 0518
Rediscovery Outreach	360 457 4431

Mobile Communications Units (MCU)

Unit ID/Designator	Agency/Location	24 Hr. #
ICV1	Clallam County Sheriff / 255 Carlsborg Rd. Sequim, WA	
ICV2	Clallam County Sheriff / 255 Carlsborg Rd. Sequim WA	

Auxiliary Communications (AUXCOMM) Frequencies

Ch Config	Name	Primary Use	Frequency		Tone
			Rx	Tx	Rx/Tx
2 MTR SIMP	OP Area Central	EOC/ECC	147.5200	147.5200	
2 MTR SIMP	OP Area Sequim	ECC	147.5600	147.5600	
2 MTR SIMP	OP Area Joyce	ECC	147.5400	147.5400	
2 MTR SIMP	OP Area Forks	ECC	147.5000	147.5000	
2 MTR SIMP	OP Area N. Coast	ECC	147.4200	147.4200	
2 MTR RPTR	Striped Peak	EOC/ECC	146.7600	146.1600	Tx 100
2 MTR RPTR	Carlsborg	EOC/ECC	146.7600	146.1600	Tx 77
2 MTR RPTR	Gunderson Mt.	EOC/ECC	145.2100	144.6100	Tx 100
2 MTR RPTR	Ellis	EOC/ECC	147.0600	147.6600	Tx 100

70 CM	OP Area Central	ECC/Local	439.7500	439.7500	
70 CM	OP Area Sequim	ECC/Local	439.8000	439.8000	
70 CM	OP Area Joyce	ECC/Local	439.6500	439.6500	
70 CM	OP Area West	ECC/Local	439.6000	439.6000	
70 CM	OP Area N. Coast	ECC/Local	439.5500	439.5500	
80 MTR	Clallam County Int	EOC/ECC	3.8850 W	3.8805 W	
40 MTR	Clallam County Int	EOC/ECC	7.2430 W	7.2430 W	
6 MTR	Resources	EOC/ECC	52.4000	52.4000	

Interoperable Channels Frequencies

VHF/UHF Interoperable Infrastructure

Name	Primary Use	Frequency			
		Rx	RX Tone	Tx	Tx Tone
LERN	Law Enforcement (Striped Peak, Ellis)	155.3700	CSQ	155.3700	100

Clark County

Agency:	Clark Regional Emergency Services Agency (CRESA)
Contact Name:	Dave Fuller
Title:	Director
Address:	710 W 13th Street; Vancouver, WA 98660
Office Phone:	360 992-9219
24/7 Phone:	360 696-4461
E-Mail:	Dave.Fuller@cresa.wa.gov

Local Dispatch Centers/Emergency Management

Agency	Location	24 Hour #
CRESA Emergency Management	710 W 13 th Street; Vancouver, WA 98660	360 696-4461

Shared Systems

System Name	Agency	Freq	24 Hr. #
Clark County 800 MHz Radio System	CRESA	800 MHz Trunked	360 696-4461
North Clark County VHF Radio System	CRESA, North Country EMS	VHF	360 696-4461

Gateways

Fixed Gateways

Name/Gateway Type	24 Hr. #	Agency
Fixed Dispatch Center Console Patches/CCGW	360 696-4461	CRESA

Transportable/Mobile Gateways

Name/Gateway Type	24 Hr. #	Agency
Southwest Washington HS Region 4	360 696-4461	Clark County Fire District #13

Repeaters

Transportable/Mobile Repeaters

Name/Agency	24 Hr. #	Band	Qty
CRESA	360 696-4461	800 MHz	3
Vancouver Police Department	360 696-4461	800 MHz	1
Clark County Sheriff's Office	360 696-4461	800 MHz	1

Radio Cache

Name/Agency	24 Hr. #	Make/Mode (Qty)	Band
Southwest Washington HS Region 4 800 MHz Radio Cache	360 696-4461	Motorola (24)	800 MHz
Southwest Washington HS Region 4 VHF Radio Cache	360 696-4461	Bendix King, RELM (100)	VHF
Southwest Washington HS Region 4 UHF Radio Cache	360 696-4461	Motorola (30)	UHF
Clark County Public Works 800 MHz Region 4 Radio Cache	360 696-4461	Motorola (48)	800 MHz

Auxiliary Communications (AUXCOMM) Frequencies

Ch Config	Name	Primary Use	Frequency		Tone
			Frequency	Offset	Rx/Tx
	CLRK01	Clark Primary Repeater - W7AIA	147.2400	+0.6	94.8
	CLRK02	Clark Secondary Repeater - W7AIA	443.9250	+5	94.8
	CLRK03	Clark Tertiary Repeater - W7AIA	443.1250	+5	94.8
	CLRK04	Clark No-Repeater Simplex - NCS (Talk-Around Primary Repeater)	147.2400	N/A	CSQ
	CLRK05	Clark Common Simplex	146.5800	N/A	94.8

Interoperable Channels Frequencies

VHF/UHF Interoperable Infrastructure

Name	Primary Use	Frequency			
		Rx	RX Tone	Tx	Tx Tone
REDNET	State Fire Net	153.8300	127.3	153.8300	127.3
VTAC 12	National VHF interop	154.4525	156.7	154.4525	156.7

Columbia County

Agency:	Columbia County Emergency Management
Contact Name:	Desi Lockard / Nancy Berentsen
Title:	E911& Emergency Management Operations Manager / Emergency Management Business Manager
Address:	341 E. Main St, Dayton, WA 99328
Office Phone:	509 382-2518
24/7 Phone:	509 520-0864
E-Mail:	Desirae_lockard@co.columbia.wa.us / nancy_berentsen@co.columbia.wa.us

Agency:	Columbia County Public Safety Communications
Contact Name:	Desi Lockard
Title:	E911/ Emergency Management Operations Manager
Address:	341 E Main St, Dayton, WA 99328
Office Phone:	509 382-2518
24/7 Phone:	509 520-0864
E-Mail:	Desirae_lockard@co.columbia.wa.us

Local Dispatch Centers/Emergency Management

Agency	Location	24 Hour #
Columbia Co Emergency Management	341 E Main St, Dayton, WA 99328	509 382-2518

Non-Government Contact Information

Agency	24 Hr. #
American Red Cross	1-833-583-3111

Repeaters

Fixed Repeaters

Name/Agency	24 Hr. #	Frequency			
		Rx	Rx Tone	Tx	Tx Tone
FD3- Thorn	509 382-2518	153.875	67.0	155.610	82.5
FD3- Delany	509 382-2518	156.000	67.0	154.130	123.0
FD3- Starbuck	509 382-2518	154.445	100.0	150.790	110.9
FD2- Waitsburg	509 382-2518	159.240	67.0	153.920	162.2
FD3- Tac 1	509 382-2518	153.875	67.0	153.875	67.0
FD3- Tac 2	509 382-2518	154.400	67.0	154.400	67.0
FD3- Tac 3	509 382-2518	156.000	67.0	156.000	67.0
FD1 Direct	509 382-2518	154.445	100.0	154.445	100.0
FD2- Waitsburg Tac	509 382-2518	159.240	100.0	159.240	100.0
CCSO- Thorn	509 382-2518	155.145	67.0	155.955	82.5
CCSO- Dayton	509 382-2518	155.145	67.0	155.955	136.5
CCSO- Delany	509 382-2518	155.145	67.0	155.955	94.8
CCSO- Starbuck	509 382-2518	155.145	67.0	155.955	127.3
CCSO- Tucannon	509 382-2518	155.145	67.0	155.955	131.8
CCSO- Tallow	509 382-2518	155.145		155.955	123.0

Radio Cache

Name/Agency	24 Hr. #	Make/Mode (Qty)	Band
Columbia County Emergency Management	509 382-2518	BK GPH (24)	VHF

Cowlitz County

Agency:	Cowlitz County 911
Contact Name:	Jerry Jensen
Title:	911 Coordinator
Address:	2790 Ocean Beach Hwy, Longview WA, 98362
Office Phone:	360 762-6803
24/7 Phone:	360 414-5500
E-Mail:	jensenj@cowlitz911.org

Agency:	Cowlitz County Emergency Management
Contact Name:	Larry Henbree
Title:	Emergency Manager
Address:	2790 Ocean Beach Hwy, Longview WA, 98362
Office Phone:	360 573-3130
24/7 Phone:	360 414-5500
E-Mail:	hembreel@cowlitzwa.gov

Local Dispatch Centers/Emergency Management

Agency	Location	24 Hour #
COWLITZ COUNTY 911 CENTER	312 SW 1ST AVE, KELSO WA 98626	

Chelan and Douglas County

Agency:	Chelan County Emergency Management
Contact Name:	Sergeant Jason Reinfeld
Title:	Emergency Management
Address:	401 Washington St. Level 1, Wenatchee, WA. 98801
Office Phone:	509 667-6864
24/7 Phone:	509 630-7506
E-Mail:	jason.reinfeld@co.chelan.wa.us

Agency:	Douglas County Emergency Management
Contact Name:	Mike Baker
Title:	Sergeant – Operations & Emergency Management
Address:	100 19th St. Suite A, East Wenatchee, WA. 98802
Office Phone:	509 884-0941
24/7 Phone:	509 668-5221
E-Mail:	mbaker@co.douglas.wa.us

Agency:	RiverCom 911
Contact Name:	Joshua Humphrey
Title:	Radio Systems Manager
Address:	140 S. Mission St., 3rd Floor, Wenatchee, WA. 98001
Office Phone:	509 662-4667
24/7 Phone:	509 630-0613
E-Mail:	jhumphrey@rivercom911.org

Local Dispatch Centers/Emergency Management

Agency	Location	24 Hour #
RiverCom 911	140 S. Mission St., 3rd Floor, Wenatchee, WA 98801	509 663-9911

Shared Systems

System Name	Agency	Freq	24 Hr. #
RiverCom 911 Radio	RiverCom 911	Analog Conventional Simulcast VHF	509 663-9911

Repeaters

Fixed Repeaters

Name/Agency	24 Hr. #	Frequency			
		Rx	Rx Tone	Tx	Tx Tone
RC North Fire	509 663-9911	155.3550	100.0	150.7900	100.0
RC West Fire	509 663-9911	155.1225	146.2	153.9650	192.8
RC Valley Fire	509 663-9911	154.2500	110.9	153.7700	141.3

Transportable/Mobile Repeaters

Name/Agency	24 Hr. #	Band	Qty
RiverCom Tac Command Portable (RC Tac CP)	509 663-9911	VHF High	1

Radio Cache

Name/Agency	24 Hr. #	Make/Mode (Qty)	Band
RiverCom SESP	509 663-9911	Kenwood NX (3)	VHF
RiverCom SESP	509 663-9911	Motorola APX (3)	VHF
RiverCom SESP	509 663-9911	Bendix King (3)	VHF

Mobile Communications Units (MCU)

Unit ID/Designator	Agency/Location	24 Hr. #
SOC Trailer	DCSO	
SWAT Bus	DCSO	

Interoperable Channels Frequencies

VHF/UHF Interoperable Infrastructure

Name	Primary Use	Frequency			
		Rx	RX Tone	Tx	Tx Tone
LERN	Interop base stations	155.3700	100.0	155.3700	100.0

Ferry County

Agency:	Ferry County
Contact Name:	Terri Sebree
Title:	911 Coordinator
Address:	PO Box 1094, Republic WA, 99166
Office Phone:	509 775-3132
24/7 Phone:	509 775-3132
E-Mail:	e911coord@co.ferry.wa.us

Agency:	Ferry County Emergency Management
Contact Name:	Steve Bonner
Title:	Emergency Manager Director
Address:	PO Box 1094, Republic WA, 99166
Office Phone:	509 775-5225
24/7 Phone:	509 775-3132
E-Mail:	emdirector@co.ferry.wa.us

Local Dispatch Centers/Emergency Management

Agency	Location	24 Hour #
FERRY COUNTY E911	175 N JEFFERSON, REPUBLIC WA 99166	

Franklin County

Agency:	Franklin County Emergency Management
Contact Name:	Sean Davis
Title:	Director
Address:	1011 E. Ainsworth St., Pasco, WA 99301
Office Phone:	509 546-5846
24/7 Phone:	509 316-2953
E-Mail:	sdavis@franklincountywa.gov

Local Dispatch Centers/Emergency Management

Agency	Location	24 Hour #
SECOMM	651 Truman Ave, Richland, WA 99352	509 628-2616

Radio Cache

Name/Agency	24 Hr. #	Make/Mode (Qty)	Band
FCEM/ FC EOC	509 628-2616	Motorola APX 7000 x 10	VHF/800

Garfield County

Agency:	Garfield County 911
Contact Name:	Cyndi Holbert
Title:	911 Coordinator
Address:	PO Box 338, Pomeroy WA, 99347
Office Phone:	509 843-3494
24/7 Phone:	509 843-3494
E-Mail:	cholbert@garfieldcountywa.gov

Agency:	Garfield County Emergency Management
Contact Name:	Justin Warren
Title:	Emergency Manager Director
Address:	PO Box 278, Pomeroy WA, 99347
Office Phone:	509 780-1271
24/7 Phone:	509 780-1271
E-Mail:	jwarren@garfieldcountywa.gov

Local Dispatch Centers/Emergency Management

Agency	Location	24 Hour #
Garfield County Sheriff's Office	789 W Main St, Pomeroy WA 99347	

Grant County

Agency:	Grant County 911
Contact Name:	D.T. Donaldson
Title:	911 Coordinator
Address:	208 South Hamilton Rd, Moses Lake WA, 98837
Office Phone:	509 762-1901
24/7 Phone:	509 762-1160
E-Mail:	d.donaldson@macc911.org

Agency:	Grant County Emergency Management
Contact Name:	Mireya Garcia
Title:	Emergency Management Specialist
Address:	1890 Nat Washington Way SE, Ephrata, WA 98823
Office Phone:	509 754-2011 x4521
24/7 Phone:	509 906-6831
Duty Officer:	509 237-2598
E-Mail:	mxgarcia@grantcountywa.gov

Local Dispatch Centers/Emergency Management

Agency	Location	24 Hour #
Multi-Agency Communications Center	208 S Hamilton Road, Moses Lake, WA 98837	509 762-1160

Grays Harbor County

Agency:	Hoquiam Fire Department
Contact Name:	Nick Falley
Title:	Assistant Fire Chief
Address:	625 8 th St Hoquiam, WA 98550
Office Phone:	(360) 538-3961
24/7 Phone:	(360) 580-6241
E-Mail:	nfalley@cityofhoquiam.com

Agency:	Grays Harbor County Emergency Management
Contact Name:	Hannah Cleverly
Title:	Deputy Director
Address:	310 W Spruce Ave Montesano, WA 98563
Office Phone:	(360) 249-3911
24/7 Phone:	(360) 580-2281
E-Mail:	hcleverly@graysharbor.us

Agency:	Grays Harbor County ER&R
Contact Name:	James Kost
Title:	Manager
Address:	100 West Broadway Montesano, WA 98563
Office Phone:	(360) 249-2152
24/7 Phone:	(360) 570-1646
E-Mail:	jkost@graysharbor.us

Local Dispatch Centers/Emergency Management

Agency	Location	24 Hour #
Grays Harbor E911	1006 H St. Aberdeen, WA 98520	(360) 533-8765
Grays Harbor Emergency Management	320 W Spruce Ave. Montesano, WA 98563	(360) 249-3911

Repeaters

Fixed Repeaters

Name/Agency	24 Hr. #	Frequency			
		Rx	Rx Tone	Tx	Tx Tone
Grays Harbor Law Primary	(360) 533-8765	155.565	167.9	154.890	103.5
Grays Harbor Law Secondary	(360) 533-8765	155.910	103.5	158.910	103.5

Grays Harbor OPS 3	(360) 533-8765	155.790	167.9	158.805	103.5
Central Law Primary	(360) 533-8765	154.725	192.8	158.850	103.5
Central Law Secondary	(360) 533-8765	155.310	192.8	159.210	103.5
Fire 1	(360) 533-8765	154.340	103.5	159.0525	103.5
Fire 2	(360) 533-8765	154.325	103.5	154.325	103.5
Fire 5	(360) 533-8765	154.310	91.5	150.790	103.5
Fire 6	(360) 533-8765	154.145	103.5	158.985	173.8
Fire 7	(360) 533-8765	154.385	103.5	155.940	103.5
Fire 8	(360) 533-8765	154.175	103.5	154.175	103.5
Fire 9	(360) 533-8765	154.235	100.0	154.235	100.0

Auxiliary Communications (AUXCOMM) Frequencies

Grays Harbor County Auxiliary Emergency Communications (AEC) repeaters tied to the BeachNet repeater system. Point of Contact: Doyle Wenzel, (360) 589-0262; Nick Falley (360) 580-6241

Name	Primary Use	Frequency		Tone
		Rx	Tx	Rx/Tx
Cosmopolis	Linked to BeachNet System	145.390	144.790	118.8Hz
Minot Peak	Linked to BeachNet System	444.050	449.050	118.8Hz
Saddle Mountain	Linked to BeachNet System	444.200	449.200	118.8Hz
Neilton	Linked to BeachNet System	444.700	449.700	118.8Hz
Capital Peak	Linked to BeachNet System	444.950	449.950	118.8Hz

Interoperable Channels Frequencies

VHF/UHF Interoperable Infrastructure

Name	Primary Use	Frequency			
		Rx	RX Tone	Tx	Tx Tone
TAC A	Fire – County Wide Tactical Frequency	151.2425	146.2	151.2425	146.2
TAC B	Fire – North & South County Tactical Frequency	154.295	146.2	154.295	146.2
TAC C	Fire – Central County Tactical Frequency	156.2025	146.2	156.2025	146.2
TAC D	Fire – East County Tactical Frequency	159.180	146.2	159.180	146.2
TAC 2	Law – Aberdeen Police Department	155.730	103.5	155.730	103.5
TAC 3	Law – Hoquiam Police Department (Repeated)	155.430	103.5	153.940	103.5
TAC 4	Law – Ocean Shores Police Department	155.490	103.5	159.090	103.5
TAC 5	Law – Westport Police Department	153.860	100.0	153.860	100.0
TAC 6	Law – Cosmopolis Police Department	154.785	103.5	154.785	103.5
TAC 7	Law – Montesano Police Department	150.995	114.8	150.995	114.8
TAC 10	Law – Quinalt Indian Nation Police Department	155.595	82.5	158.820	82.5

Island County

Agency:	Island County Emergency Service 911 Center
Contact Name:	Sofia Kohfield

Title:	Executive Director
Address:	840 SE Barrington Dr Oak Harbor WA 98277
Office Phone:	360 914-2403
24/7 Phone:	360 914-2403
E-Mail:	sofia@icom911.org

Agency:	Department of Emergency Management
Contact Name:	Rachel Schwinden
Title:	Emergency Management Coordinator
Address:	1 NE 7 th Street, Coupeville WA 98239
Office Phone:	360 678-2305
24/7 Phone:	564 676-5544
E-Mail:	r.schwinden@islandcountywa.gov

Local Dispatch Centers/Emergency Management

Agency	Location	24 Hour #
ICOM 911 Center Non-Emergency	840 SE Barrington Dr Oak Harbor WA 98277	360 679-9567
Island County Emergency Management	1 NE 7 th Street, Coupeville WA 98239	360 679-7370

Non-Government Contact Information

Agency	24 Hr. #
American Red Cross	1-833-585-3111

Shared Systems

System Name	Agency	Freq	24 Hr. #
ICOM 911 Radio System	ICOM 911 Center	Listed in Repeaters	360 679-9567

Repeaters

Fixed Repeaters

Name/Agency	24 Hr. #	Frequency			
		Rx	Rx Tone	Tx	Tx Tone
LE TAC – Island Co Sheriff	360 679-9567	453.0500	100.0	458.0500	123.0
OHPD – Oak Harbor Police Dept	360 679-9567	460.5750	94.8	465.5750	94.8
Fire 1 – ICOM 911	360 679-9567	154.3400	100.0	154.3400	100.0
Fire 2 – ICOM 911	360 679-9567	153.7550	100.0	154.8300	100.0
Fire 3 – ICOM 911	360 679-9567	154.1750	100.0	158.9475	192.8
Fire 4 – ICOM 911	360 679-9567	154.2950	100.0	159.1950	100.0
Fire 5 – ICOM 911	360 679-9567	155.7450	100.0	153.9350	123.0
Fire 6 – ICOM 911	360 679-9567	154.4300	100.0	154.3400	100.0

Jefferson County

Agency:	Jefferson County 911 dba Jeffcom 911 Communications
Contact Name:	Matt Stewart
Title:	Director
Address:	81 Elkins Rd, Port Hadlock WA 98339
Office Phone:	360 344-9788
24/7 Phone:	360 344-9779 (dispatch)
E-Mail:	director@jeffcom911.us

Agency:	Jefferson County Department of Emergency Management
Contact Name:	Willie Bence
Title:	Director
Address:	81 Elkins Rd, Port Hadlock WA 98339
Office Phone:	360 385-9368
24/7 Phone:	360 316-6008
E-Mail:	jcdem@co.jefferson.wa.us

Local Dispatch Centers/Emergency Management

Agency	Location	24 Hour #
Jeffcom 911 Communications	81 Elkins Rd, Port Hadlock WA 98339	360 344-9779

Shared Systems

System Name	Agency	Freq	24 Hr. #
Analog simulcast VHF/UHF	Jeffcom 911 Communications		360 344-9779

Repeaters

Fixed Repeaters

Name	Use	Frequency			
		Rx	Rx Tone	Tx	Tx Tone
JC Fire Primary	Fire toning, dispatch and response	153.8600	110.9	155.1150	167.9
JC Law East	Law enforcement dispatch east of ONP	453.5750	103.5	458.5750	162.2
JC Law West	Law enforcement dispatch on West End	453.5750	103.5	458.5750	167.9
U-LERN	Law interop via crossband LERN repeater	460.3250	91.5	460.3250	91.5

NOTES: Radios must be programmed with 30-second or similar time-out timers. Radios must be programmed to transmit Motorola-type 120-degree reverse PL burst at end of transmission – no other format of reverse PL or STE is acceptable. Radios must be programmed not to transmit MDC1200 IDs on except on *JC Fire Primary* when assigned by Jefferson County Fire Chiefs Association. Radios must be programmed not to transmit MDC1200 emergency alerts except if assigned an MDC1200 ID by Jefferson County Fire Chiefs Association for *Fire Primary* or Jefferson County Sheriff’s Office for *Law East and Law West*.

Auxiliary Communications (AUXCOMM) Frequencies

Ch Config	Name	Primary Use	Frequency		Tone
			Rx	Tx	Rx/Tx
2M	PT RPTR	VECOM primary Port Townsend	145.1500	144.5500	114.8
6M	PT RPTR 6M	VECOM 6M linked to primary Port Townsend 2M repeater	53.3700	51.6700	100.0
70CM	JC VECOM	VECOM DMR Port Townsend	443.8250	448.8250	CC1 TG: 313153
2M Winlink	PTFS RMS	VECOM Winlink gateway Port Townsend	144.9300	144.9300	
GMRS	PT GMRS 17	VECOM GMRS Port Townsend	462.6000	462.6000	91.5
70CM	MI RPTR	VECOM backup Marrowstone Is	440.7250	445.7250	114.8
2M Winlink	MI RMS	VECOM Winlink gateway backup Marrowstone Is	145.6500	145.6500	
2M packet	PTpktRMS	VECOM ax.25 gateway Port Townsend	145.0200	145.0200	

Interoperable Channels Frequencies*VHF/UHF Interoperable Infrastructure*

Name	Primary Use	Frequency			
		Rx	RX Tone	Tx	Tx Tone
JC Fire Tac 2	Fireground	154.4150	123.0	154.4150	123.0
JC Fire Tac 3	Fire district training	153.9500	123.0	153.9500	123.0
JC Fire Tac 4	Fireground	154.1600	123.0	154.1600	123.0
JC Fire Tac 5	Fireground	155.3250	123.0	155.3250	123.0
PTPD Tac	Port Townsend PD	458.0500	67.0	458.0500	67.0
JCSO Tac 2	Jefferson County SO	151.4600	91.5	151.4600	91.5
JCSO Tac 3	Jefferson County SO	155.6025	91.5	155.6025	91.5
JCSO Tac 4	Jefferson County SO	465.3250	91.5	465.3250	91.5

NOTES: *JC Fire Tac 3* is limited to 5 watts ERP. *JC Fire Tac 4* is limited to 25 watts ERP. Radios must be programmed with 30-second or similar time-out timers. Radios must be programmed to transmit Motorola-type 120-degree reverse PL burst at end of transmission – no other format of reverse PL or STE is acceptable. Radios must be programmed not to transmit MDC1200 IDs except on *JC Fire Tac* channels when assigned by Jefferson County Fire Chiefs Association and except on *PTPD Tac* when assigned by Port Townsend PD.

King County

Agency:	PSERN
Contact Name:	Sean Douglas
Title:	Engineering Manager
Address:	19717 62nd Ave S, E-102, Kent, WA 98032
Office Phone:	206 263-8094

E-Mail:	Sean.Douglas@psern.org
Agency:	NORCOM 911
Contact Name:	Andrew Johnson
Title:	King County, CAPSI Chair
Address:	450 110 th Ave NE, Bellevue, WA 98004
Office Phone:	425 577-5690
24/7 Phone:	425 736-9161
E-Mail:	ajohnson@norcom.org

Local Dispatch Centers/Emergency Management

Agency	Location	24 Hour #
Enumclaw Police Department	1705 Wells Street, Enumclaw, WA 98022	360 825-3505
Issaquah Police Department	130 E Sunset Way, Issaquah, WA 98027	425 837-3200
King County Sheriff’s Office	3511 NE 2 nd Street, Renton, WA 98056	206 296-3311
NORCOM 911	450 110 th Avenue NE, Bellevue, WA 98004	425 577-5656
Port of Seattle Police/Fire	17801 International Blvd (SeaTac Airport), Seattle 98168	206 433-5401
Redmond Police Department	8701 160 th Avenue NE, Redmond, WA 98052	425 885-1333
Seattle 911	810 Virginia Street, Seattle, WA 98101	206 583-2111
University of Washington Police	3939 15 th Avenue NE, Seattle, WA 98105	206 685-8973
Valley Communications (ValleyCom)	27519 108 th Avenue SE, Kent, WA 98030	253 372-1488
Washington State Patrol – Bellevue	2803 156 th Avenue SE, Bellevue, WA 98007	425 401-7700

Shared Systems

System Name	Agency	Freq	24 Hr. #
Integrated Wireless Network (IWN)	Department of Justice, Federal Bureau of Investigation	VHF-High (Digital Trunked)	206 423-5772
Law Enforcement Radio Network (LERN)	Washington State Patrol	VHF-High (Conv. Analog)	
Public Safety Radio System	Port of Seattle	800 MHz (Digital Trunked)	206 947-7734
Puget Sound Emergency Radio Network	PSERN	800 MHz (Digital Trunked)	

Gateways

Fixed Gateways

Name/Gateway Type	24 Hr. #	Agency
Port of Seattle-PSERN / ISSI		Port of Seattle
PSERN-SNO911 P25 TRS / ISSI		PSERN
PSERN-POS P25 TRS / ISSI		PSERN
PSERN-Tacoma P25 TRS / ISSI		PSERN
Redmond PD / Console Patch	425 885-1333	Redmond Police Department

Seattle Fire Alarm Center / Console Patch	206 386-1496	PSERN
UW PD / Console Patch	206 685-8973	University of Washington Police/Fire
ValleyCom / Console Patch	253 852-2121	Valley Communications Center

Transportable/Mobile Gateways

Name/Gateway Type	24 Hr. #	Agency
Seattle Fire Department / Motorola Radios (4)	206-386-1494	Seattle Fire Department

Repeaters

Transportable/Mobile Repeaters

Name/Agency	24 Hr. #	Band	Qty
Eastside Fire & Rescue	425 269-6907	VHF	1
Seattle Fire Department	206 386-1494	VHF,	2
		UHF,	4
		700-800 MHz	3

Radio Cache

Name/Agency	24 Hr. #	Make/Mode (Qty)	Band
PSERN		Motorola APX4000, APX6000, APX6000XE, APX8000, APX8000XE	VHF, 700 MHz, 800 MHz
Seattle Fire Regional Radio Cache	206-386-1494	Motorola, BK Tech (58)	VHF
Seattle Fire Regional Radio Cache	206-386-1494	Motorola, BK Tech (26)	UHF
Seattle Fire Regional Radio Cache	206-386-1494	Motorola, BK Tech (94)	700-800 MHz

Mobile Communications Units (MCU)

Unit ID/Designator	Agency/Location	24 Hr. #
COM-181	Eastside Fire & Rescue	425 269-6907
MICV	Port of Seattle / Seattle Fire Department	206 947-7734
MCI2	Seattle Fire Department / Fire Station 30	206 386-1494

800 MHz Interoperability Talkgroups

Channel	Port of Seattle	King County
1	POS CALL	KC CALL
2	POS IO 02	KC IO 02
3	POS IO 03	KC IO 03
4	POS IO 04	KC IO 04
5	POS IO 05	KC IO 05
6	POS IO 06	KC IO 06
7	POS IO 07	KC IO 07
8	POS IO 08	KC IO 08
9	POS IO 09	KC IO 09
10	POS IO 10	KC IO 10
11	POS IO 11	KC IO 11
12	POS IO 12	KC IO 12

13	POS IO 13	KC IO 13
14	POS IO 14	KC IO 14
15	POS IO 15	KC IO 15
16	POS EM P/POS EM F	KC EM P/KC EM F

Note: King County agencies are required to program, as a minimum standard, STATEOPS2, STATEOPS3 and STATEOPS5 in all Law Enforcement radios and STATEOPS1, STATEOPS3 and STATEOPS4 are required in all Fire/EMS Service radios.

Kitsap County

Agency:	Kitsap 911
Contact Name:	Technical Services Group – Radio
Title:	Technical Services Group – Radio
Address:	911 Carver Street, Bremerton, WA 98312
Office Phone:	360 307-5865
24/7 Phone:	360 308-5400
E-Mail:	radio@kitsap911.org

Agency:	Kitsap County Department of Emergency Management
Contact Name:	Jan Glarum
Title:	Director
Address:	8900 Imperial Way SW Bremerton, Washington 98312
Office Phone:	360-307-4360
24/7 Phone:	360-533-9988
E-Mail:	dem@kitsap.gov

Local Dispatch Centers/Emergency Management

Agency	Location	24 Hour #
Kitsap 911	911 Carver Street, Bremerton, WA 98312	360 308-5400
		360 307-5844
Washington State Patrol – Bremerton	4811 Werner Rd, Bremerton, WA 98312	360 473-0300
		360 473-0319
US Navy Regional Dispatch Center	1103 Hunley Rd, Silverdale, WA 98315	360 315-4064

Shared Systems

System Name	Agency	Freq	24 Hr. #
Kitsap 911 - Conventional	Kitsap 911	VHF-High (Conv. Analog)	360-308-5400
Kitsap 911 – Trunked P25II	Kitsap 911	800 MHz P25 Phase II	360-308-5400

Gateways

Fixed Gateways

Name/Gateway Type	24 Hr. #	Agency
Kitsap 911 / Console Patch	360-308-5400	Kitsap 911

Radio Cache

Name/Agency	24 Hr. #	Make/Mode (Qty)	Band
Kitsap 911	360-308-5400	Harris XL200P	VHF/UHF/700/800 (Triband)

Auxiliary Communications (AUXCOMM) Frequencies

Ch Config	Name	Primary Use	Frequency		Tone
			Rx	Tx	Rx/Tx
2M	Silverdale	KARS Primary	145.4250(N)	144.8250	88.5
2M	Gold Mtn	KCARC (KARS Backup)	146.620	146.020	103.5
2M Winlink	Bremerton	Winlink gateway	145.080	145.080	
GMRS	Gold Mtn	GMRS	462.6000	467.6000	
70CM	Bremerton	KCARC (KARS Backup)	440.075	449.075	103.5

Interoperable Channels Frequencies

VHF/UHF Interoperable Infrastructure

Name	Primary Use	Frequency			
		Rx	RX Tone	Tx	Tx Tone
LE4	Car-to-Car (Law / Fire)	154.9650	82.5	153.9950	162.2
LE5	TAC (Law)	154.9800	162.2	154.9800	162.2
LERN	Interop to WSP (Law)	155.3700	100.0	155.3700	100.0
Fire3	Tactical (Fire)	155.7750	91.5	155.7750	91.5
Fire4	Tactical (Fire)	153.7700	91.5	153.7700	91.5
Fire5	Tactical (Fire)	154.4150	146.2	154.4150	146.2
REDNET	On-Scene (Fire)	153.8300		153.8300	
TAC7	Tactical (Law / Fire) Patched to Trunked System	155.9250	82.5	154.1450	162.2
TAC8	Tactical (Law / Fire)	155.2500	162.2	155.2500	162.2
TAC9	Tactical (Law / Fire)	159.4650	162.2	159.4650	162.2
TAC10	Tactical (Law / Fire)	153.8150	162.2	153.8150	162.2

800 Trunked P25 Phase II ONLY Interoperable Infrastructure (Under construction expected 2027)

Channel	Kitsap IO
1	KT IO Call
2	KT IO 2
3	KT IO 3
4	KT IO 4
5	KT IO 5
6	KT IO 6

7	KT TAC 7 (Patched to Conventional System)
8	KT IO 8
9	KT IO 9
10	KT IO 10
11	KT IO 11

Kittitas County

Agency:	KITTCOM 911 (Kittitas County 911 and Emergency Dispatch)
Contact Name:	Rich Elliott
Title:	Director
Address:	700 Elmview Road, Ellensburg, WA 98926
Office Phone:	509 925-8530
24/7 Phone:	509 201-6280
E-Mail:	rich.elliott@kittcom.gov

Agency:	KITTCOM 911
Contact Name:	John Storch
Title:	Radio Services Manager
Address:	700 Elmview Road, Ellensburg, WA 98926
Office Phone:	509 925-8537
24/7 Phone:	509 260-0779
E-Mail:	John.Storch@kittcom.gov

Repeaters

Fixed Repeaters (KITTCOM)

Name	Use	Frequency			
		Rx	Rx Tone	Tx	Tx Tone
LAW MAIN	Law Dispatch (P) – Simulcast	155.6550 N	151.4	154.6500 N	141.3
FIRE PAGE	Fire EMS Dispatch (P) – Simulcast	154.2050 N	151.4	153.7475 N	218.1
TAC 1	County Interop (C) – Simulcast	155.7900 N	186.2	151.1225 N	218.1
LAW ALT	Law Alternative (A) – Simulcast	155.5575 N	162.2	158.9400 N	94.8
FIRE OPS	Fire/EMS Operation (P) – Simulcast	155.1375 N	162.2	153.8150 N	141.3
TAC 7 SKY (FIRE)	Fire Tactical – Central County Onscene WUI	155.2125 N	151.4	158.9625 N	210.7
LAW RPTR MAN	Law – Menastash Ridge near I-82 Eburg	155.6550 N	151.4	154.6500 N	100.0
LAW RPTR SKY	Law – Sky Meadows near Cle Elum	155.6550 N	151.4	154.6500 N	203.5
LAW RPTR RYE	Law – Ryegrass east of Ellensburg	155.6550 N	151.4	154.6500 N	192.8
LAW RPTR BLEW	Law – Blewett Pass	155.6550 N	151.4	154.6500 N	167.9
FIRE RPTR MAN	Fire/EMS – Menastash Ridge near I-82 Eburg	154.2050 N	151.4	153.7475 N	225.7
FIRE RPTR SKY	Fire/EMS – Sky Meadows near Cle Elum	154.2050 N	151.4	153.7475 N	233.6
FIRE RPTR RYE	Fire/EMS – Ryegrass east of Ellensburg	154.2050 N	151.4	153.7475 N	206.5

FIRE RPTR BLEW	Fire/EMS – Blewett Pass	154.2050 N	151.4	153.7475 N	100.0
----------------	-------------------------	------------	-------	------------	-------

Transportable/Mobile Repeaters

Name/Agency	24 Hr. #	Band	Qty
KITTCOM 911	509 260-0779	VTAC 36	2

Radio Cache

Name/Agency	24 Hr. #	Make/Mode (Qty)	Band
KITTCOM 911	509 260-0779	VHF Portable (24) 700/800 Portable (10)	VHF 700/800

Interoperable Channels Frequencies

VHF/UHF Interoperable Infrastructure

Name	Primary Use	Frequency			
		Rx	RX Tone	Tx	Tx Tone
TAC 2 (LAW)	Law Enforcement unit to unit tactical, primarily Ellensburg area - simplex	155.6100 N	210.7	155.6100 N	210.7
TAC 3 (FIRE/EMS)	Fire and EMS unit to unit / scene tactical, west County - simplex	154.3250 N	203.5	154.3250 N	203.5
TAC 4 (LAW)	Law Enforcement unit to unit tactical, countywide outside Ellensburg - simplex	156.1500 N	97.4	156.1500 N	97.4
TAC 5 (FIRE/EMS)	Fire and EMS unit to unit / scene tactical, east County - simplex	159.2025 N	210.7	159.2025 N	210.7
TAC 6 (LAW)	Law enforcement tactical, primary is TRT (WRAE733)	150.8050 N	151.4	150.8050 N	151.4

Klickitat County

Agency:	Klickitat County Department of Emergency Management
Contact Name:	Frank Hewey
Title:	Emergency Manager
Address:	Emergency Management, C/O Klickitat County Public Works, 115 W. Court Street, Goldendale, WA 98620
Office Phone:	509 773-2460
24/7 Phone:	509 250-0528
E-Mail:	emergencymanagement@klickitatcounty.gov

Agency:	Klickitat County 911 Dispatch
Contact Name:	Jeff King
Title:	Director
Address:	199 Industrial Way, Goldendale, WA 98620
Office Phone:	509 773-0528
24/7 Phone:	509 773-4545

E-Mail: kc911dispatch@klikitatcounty.gov

Local Dispatch Centers/Emergency Management

Agency	Location	24 Hour #
Klickitat County Emergency Management	115 W. Court Street, Goldendale, WA 98620	509 250-0528
Klickitat County 911 Dispatch	199 Industrial Way, Goldendale, WA 98620	509 773-4545

Non-Government Contact Information

Agency	24 Hr. #
American Red Cross	888 680-1455
Klickitat County Amateur Radio Emergency Service (ARES)	509 250-0528

Repeaters

Fixed Repeaters

Name/Agency	24 Hr. #	Frequency			
		Rx	Rx Tone	Tx	Tx Tone
BULWCENT – Back Up Central Law Enforcement Dispatch - 911 DISPATCH	509 773-4545	153.8450	146.2	158.8350	88.5
BUFRCENT – Back up Central County Fire/EMS Dispatch – 911 Dispatch	509 773-4545	154.1300	162.2	158.8800	156.7
BULWWEST – Back up West Law Enforcement Dispatch – 911 Dispatch	509 773-4545	154.8900	97.4	158.8500	82.5
BUFRWEST – Back Up West Fire./EMS Dispatch – 911 Dispatch	509 773-4545	154.2950	91.5	158.7750	107.2
BU EAST – Back Up East All Hazards Dispatch – 911 Dispatch	509 773-4545	155.7450	118.8	158.9100	141.3
BU GOLD – Back Up Goldendale All Hazards Dispatch – 911 Dispatch	509 773-4545	154.0850	110.9	155.4150	146.2
BU ROAD – Back Up Public Works Dispatch – 911 Dispatch	509 773-4545	155.1150	192.8	155.9850	167.9
JUNIPER – All Hazards Central Repeater – 911 Dispatch	509 773-4545	155.3850	91.5	150.8050	91.5
BURDOIN – All Hazards West Repeater – 911 Dispatch	509 773-4545	155.8650	131.8	150.7750	131.8

Transportable/Mobile Repeaters

Name/Agency	24 Hr. #	Band	Qty
Klickitat County Emergency Management	509 250-0528	VHF – Trailer Mounted	1
Klickitat County Emergency Management	509 250-0528	VHF – Tough Case Mounted	1

Radio Cache

Name/Agency	24 Hr. #	Make/Mode (Qty)	Band
Klickitat County Emergency Management	509 250-0528	BK – DPHX5102X (20)	VHF

Mobile Communications Units (MCU)

Unit ID/Designator	Agency/Location	24 Hr. #
Mobile Command Post (MCP)	Klickitat County Emergency Management, Goldendale, WA	509 250-0528

Interoperable Channels Frequencies

VHF/UHF Interoperable Infrastructure

Name	Primary Use	Frequency			
		Rx	RX Tone	Tx	Tx Tone
PAGE	Countywide Public Safety Paging	152.0075	100.0	N/A	N/A
LAW	Countywide Law Enforcement Dispatch	153.8450	146.2	158.8350	114.8
FIRE	Countywide Fire/EMS Dispatch	154.1300	162.2	158.8800	141.3
COUNTY OPS	Countywide All Hazards Repeated Channel	154.2950	91.5	158.7750	131.8
WEST OPS	West County All Hazards Repeated Channel	154.8900	97.4	158.8500	167.9
CENTRAL OPS	Central County All Hazards Repeated Channel	154.0850	110.9	155.4150	156.7
EAST OPS	East County All Hazards Repeated Channel	155.7450	118.8	158.9100	123.0
ROAD	Countywide Public Works Dispatch	155.1150	192.8	155.9850	192.8
TAC 1	Simplex All Hazards Tactical	154.0700	82.5	154.0700	82.5
TAC 2	Simplex All Hazards Tactical	154.3550	82.5	154.3550	82.5
TAC 3	Simplex All Hazards Tactical	154.4000	82.5	154.4000	82.5
VCALL 10	National interoperability Travel Calling	155.7525	156.7	155.7525	156.7

Lewis County

Agency:	Lewis County Department of Emergency Management
Contact Name:	Erika Katt
Title:	Emergency Management Deputy Director
Address:	351 NW North Street Chehalis, WA 98532
Office Phone:	360 740-1153
24/7 Phone:	360 740-1105
E-Mail:	Erika.katt@lewiscountywa.gov

Agency:	Lewis County 911
Contact Name:	Jeff Hursh
Title:	Executive Director
Address:	351 NW North Street, Chehalis WA 98532
Office Phone:	360 740-1464
24/7 Phone:	360 740-1105
E-Mail:	Jeff.hursh@lewiscountywa.gov

Local Dispatch Centers/Emergency Management

Agency	Location	24 Hour #
Lewis County 911	351 NW North Street, Chehalis WA 98532	360 740-1105
Lewis County Dept. of Emergency Management	351 NW North Street, Chehalis WA 98532	360 740-1105

Non-Government Contact Information

Agency	24 Hr. #
Salvation Army	619 857-1676

Repeaters

Fixed Repeaters

Name/Agency	24 Hr. #	Frequency			
		Rx	Rx Tone	Tx	Tx Tone
LCSO WEST	360 740-1105	155.6250	CSQ	156.0300	88.5
Fire 1	360 740-1105	154.1900	CSQ	154.1900	123.0
RFA	360 740-1105	154.9725	123.0	159.0975	123.0
City PD	360 740-1105	156.1800	131.8	159.0000	131.8

Transportable/Mobile Repeaters

Name/Agency	24 Hr. #	Band	Qty
Lewis County Dept. of Emergency Management	360 740-1105	VHF High	1

Interoperable Channels Frequencies

VHF/UHF Interoperable Infrastructure

Name	Primary Use	Frequency			
		Rx	RX Tone	Tx	Tx Tone
LERN	Mutual aid/simplex single site	155.3700	CSQ	155.3700	100.0
VTAC 11	Mutual aid / simplex 3 sites Crego, Toledo, Bennet Rd	151.1375	CSQ	151.1375	156.7
Red Net	Mutual aid / simplex 2 sites Crego, Bennet Rd	153.8300	CSQ	153.8300	CSQ

Lincoln County

Agency:	Lincoln County Sheriff’s Office
Contact Name:	Brad Sweet
Title:	911 Coordinator
Address:	404 Sinclair St, Davenport, WA 99122
Office Phone:	509 348-2028
24/7 Phone:	509 725-3501
E-Mail:	bsweet@co.lincoln.wa.us

Agency:	Lincoln County Emergency Manager
Contact Name:	Gabe Gants
Title:	Emergency Manager

Address:	PO Box 367, Davenport WA, 99122
Office Phone:	509 725-9264
24/7 Phone:	509 725-3501
E-Mail:	ggants@co.lincoln.wa.us

Local Dispatch Centers/Emergency Management

Agency	Location	24 Hour #
Lincoln County Sheriff's Office	404 Sinclair St, Davenport, WA 99122	509 725-3501

Gateways

Fixed Gateways

Name/Gateway Type	24 Hr. #	Agency
911b-mam-lincolncnty / Nokia 7210 SAS-K E	509 725-3501	Lincoln County Sheriff's Office
911a-noanet-lincolncnty / Nokia 7210 SAS-K E	509 725-3501	Lincoln County Sheriff's Office

Repeaters

Fixed Repeaters

Name/Agency	24 Hr. #	Frequency			
		Rx	Rx Tone	Tx	Tx Tone
SIMPLEX LAW	509 725-3501	156.0300	110.9	156.0300	110.9
LAW TAC SIMPLEX	509 725-3501	154.9500	77.0	154.9500	77.0
MAGNUSON LAW	509 725-3501	156.0300	110.9	154.9500	110.9
JACKWOOD LAW	509 725-3501	156.0300	110.9	154.9500	179.9
ODESSA LAW	509 725-3501	156.0300	110.9	154.9500	123.0
SPRAGUE LAW	509 725-3501	156.0300	110.9	155.7900	179.9
GRAYS BUTTE LAW	509 725-3501	156.0300	110.9	154.9500	151.4
JOHNNY GEORGE LAW	509 725-3501	156.0300	110.9	154.9500	103.5
CRESTON BUTTE LAW	509 725-3501	156.0300	110.9	154.9500	85.4
TOPPER LAW	509 725-3501	156.0300	110.9	154.9500	107.2
MIELKE LAW	509 725-3501	156.0300	110.9	154.9500	186.2

Radio Cache

Name/Agency	24 Hr. #	Make/Mode (Qty)	Band
Lincoln County Sheriff's Office	509 725-3501	MOTOROLA APX6000 (12)	700/800
Lincoln County Sheriff's Office	509 725-3501	MOTOROLA APX6500 (3)	700/800
Lincoln County Sheriff's Office	509 725-3501	MOTOROLA APX600 (6)	700/800
Lincoln County Sheriff's Office	509 725-3501	MOTOROLA APX8500 (11)	700/800
Lincoln County Sheriff's Office	509 725-3501	VEHICULAR RPTR (3)	700/800

Interoperable Channels Frequencies*VHF/UHF Interoperable Infrastructure Fire – EMS Channels*

Name	Primary Use	Frequency			
		Rx	RX Tone	Tx	Tx Tone
FIRE C-C	SIMPLEX FIRE -EMS	154.2050	110.9	154.2050	110.9
F MAGGY	MAGNUSON FIRE - EMS	154.2050	136.5	153.9500	110.9
F JOHNNY	JOHNNY GEORGE FIRE – EMS	154.2050	110.9	153.9500	151.4
F LAMONT	LAMONT FIRE – EMS	154.2050	136.5	153.9500	77.0
F SPRAG	SPRAGUE I-90 FIRE – EMS	154.2050	136.5	153.9500	173.8
F MIELKE	MIELKE FIRE – EMS	154.2050	110.9	150.7750	141.3
F CREST	CRESTON FIRE – EMS	154.2050	110.9	153.9500	85.4
F ODESSA	ODESSA FIRE - EMS	154.2050	179.9	153.9500	123.0
F GRAYS	GRAYS BUTTE FIRE – EMS	154.2050	136.5	153.9500	186.2
F TOPPER	TOPPER FIRE – EMS	154.2050	110.9	153.9500	203.5
F MAGTAC	MAGNUSON FIRE TAC REPEATER	153.7400	131.8	155.0775	179.9
F Odstac	ODESSA FIRE TAC REPEATER	155.3550	173.8	150.7750	123.0
F LAMTAC	LAMONT FIRE TAC REPEATER	155.3550	136.5	150.7750	167.9
MEILTACR	MEILKE FIRE TAC REPEATER	155.3550	110.9	150.7750	110.9
MEILTACS	MEILKE FIRE SIMPLEX	153.9500	141.3	153.9500	141.3
F JAKWD	JACKWOOD FIRE - EMS REPEATER	154.2050	110.9	153.9500	88.5
F JAKTAC	JACKWOOD FIRE TAC REPEATER	155.3550	173.8	150.7750	173.8
F GRYTAC	GRAYS BUTTE FIRE TAC REPEATER	153.7400	131.8	155.0775	131.8
F 7BYTAC	7 BAYS FIRE TAC REPEATER	155.3550	85.4	153.9800	85.4
FWILTAC	WILBUR FIRE TAC SIMPLEX	153.9500	97.4	153.9500	97.4
F TAC 1	FIRE TAC 1	155.0775	156.7	155.0775	156.7
F TAC 2	FIRE TAC 2	153.7400	179.9	153.7400	179.9
F TAC 3	FIRE TAC 3	153.9800	151.4	153.9800	151.4

Mason County

Agency:	Mason County 9-1-1 (MACECOM)
Contact Name:	Chris Huss
Title:	Public Safety Systems Manager
Address:	525 W Cota St. Shelton, WA. 98584
Office Phone:	360 545-2737
24/7 Phone:	360 426-4441
E-Mail:	chuss@macecom.org

Agency:	Mason County Emergency Management
Contact Name:	Tania Kenner
Title:	Sr Emergency Management Coordinator

Address:	100 W Public Works Dr., Shelton, WA 98584
Office Phone:	360 427-7535
24/7 Phone:	360 870-7167
E-Mail:	tkenner@masoncountywa.gov

Agency:	Mason County Sheriff’s Office
Contact Name:	Trevor Severance
Title:	Operations Lieutenant
Address:	322 N 3 rd St., Shelton, WA 98584
Office Phone:	360 427-9670x112
24/7 Phone:	360 463-6943
E-Mail:	tseverance@masoncountywa.gov

Local Dispatch Centers/Emergency Management

Agency	Location	24 Hour #
Mason County 9-1-1 (MACECOM)	525 w Cota St. Shelton, WA. 98584	360-426-4441
Mason County Emergency Management	100 W Public Works Dr., Shelton, WA 98584	360-427-7535 24 Hour Duty Officer Schedule w/ MACECOM

Gateways

Fixed Gateways

Name/Gateway Type	24 Hr. #	Agency
ESCHAT Law/Fire Systems Donor Radio		MACECOM

Repeaters

Fixed Repeaters

Name/Agency	Band	Frequency			
		Rx	Rx Tone	Tx	Tx Tone
MACECOM Law 1 NXDN System	UHF NXDN Digital	465.4375	41	453.15625	41
		465.4375	41	453.23125	41
		465.4375	41	453.66875	41
		465.4375	41	460.4375	41
		465.4375	41	453.28125	41
MACECOM Fire 1 System		158.7675	110.9	156.1050	110.9
		158.7675	110.9	154.7250	110.9
MASON COUNTY	UHF NORTH	465.2250		460.2250	127.3
MASON COUNTY	UHF SOUTH	465.2250		460.2250	114.8
MASON COUNTY	UHF EAST	465.2250		460.2250	136.5

Mobile Communications Units (MCU)

Unit ID/Designator	Agency/Location	24 Hr. #
--------------------	-----------------	----------

MCCU	Mason County DEM/100 W Public Works Dr, Shelton, WA	360-426-4441
MCSAR Com Trailer	Mason County Search and Rescue	360-426-4441
Command 1	Mason County Sheriff's Office	360-426-4441

Auxiliary Communications (AUXCOMM) Frequencies

Ch Config	Name	Primary Use	Frequency		Tone
			Rx	Tx	Rx/Tx
2M	Mason1	Command	146.7200	146.1200	103.5/103.5

Interoperable Channels Frequencies

VHF/UHF Interoperable Infrastructure

Name	Primary Use	Frequency			
		Rx	RX Tone	Tx	Tx Tone
LERN	Law Enforcement	155.3700		155.3700	
OSCCR	INTEROP	156.1350		156.1350	203.5
VTAC 11	INTEROP	151.1375		151.1375	156.7
LGS	COUNTY SIMPLEX TACTICAL	155.1450		155.1450	110.9
REDNET	STATEWIDE TACTICAL	153.8300		153.8300	110.9
DEM/EOC	DEM/EOC	155.1850		155.1850	CSQ

Okanogan County

Agency:	Okanogan County Emergency Management
Contact Name:	Maurice Goodall
Title:	Director
Address:	123 5 th Ave N, Room 107
Office Phone:	509 422-7206
24/7 Phone:	
E-Mail:	em@okanogancounty.gov

Agency:	Okanogan County Sheriff's Office
Contact Name:	Mike Worden
Title:	Chief Deputy of Communications
Address:	149 – 4 th Avenue North
Office Phone:	509 422-7204
24/7 Phone:	
E-Mail:	mworden@okanogancounty.gov

Local Dispatch Centers/Emergency Management

Agency	Location	24 Hour #
Okanogan County Sheriff's Office	149 – 4 th Avenue North, Okanogan, WA	509 422-7200
Okanogan County Emergency Management	123 5 th Ave N, Room 107	509 422-7206

Shared Systems

System Name	Agency	Freq	24 Hr. #
WSDOT 700	WSDOT	Harris P25 Phase 2 700MHz Trunked	

Transportable/Mobile Gateways

Name/Gateway Type	24 Hr. #	Agency
MCV Trailer/ACU-Z1	509 422-7232 opt 4	Okanogan County Sheriff’s Office

Repeaters

Transportable/Mobile Repeaters

Name/Agency	24 Hr. #	Band	Qty
OCSO Command Repeater	509 422-7232 opt 4	VHF High	1

Mobile Communications Units (MCU)

Unit ID/Designator	Agency/Location	24 Hr. #
MCV Trailer	Okanogan County Sheriff’s Office	509 422-7232 opt 4

Interoperable Channels Frequencies

VHF/UHF Interoperable Infrastructure

Name	Primary Use	Frequency			
		Rx	RX Tone	Tx	Tx Tone
LERN	LERN Tunk Mtn/Shared with WSP	155.3700	CSQ	155.3700	100.0

700/800 MHz Interoperable Infrastructure

Name	Primary Use/Locations	Frequency			
		Rx	RX Tone	Tx	Tx Tone
7CALL70	Pitcher Hill - Okanogan (City), Omak	773.25625	\$293	803.25625	\$293

Pacific County

Agency:	Pacific County 911
Contact Name:	Nick Milton
Title:	County Telecom Engineer
Address:	300 Memorial Drive
Office Phone:	360 875-9444
24/7 Phone:	
E-Mail:	nmilton@co.pacific.wa.us

Agency:	Pacific County Emergency Management
Contact Name:	Scott McDougall
Title:	PCEMA Director
Address:	300 Memorial Drive, PO Box 1143, South Bend, WA 98586

Office Phone:	360 875-9338
24/7 Phone:	360 214-1046
E-Mail:	smcdougall@co.pacific.wa.us

Local Dispatch Centers/Emergency Management

Agency	Location	24 Hour #
PACCOM Non-Emergency	300 Memorial Drive, South Bend, WA 98586	360 875-9397
Emergency Management	300 Memorial Drive, South Bend, WA 98586	360 214-1046

Non-Government Contact Information

Agency	24 Hr. #
American Red Cross	1-833-583-3111

Gateways

Fixed Gateways

Name/Gateway Type	24 Hr. #	Agency
Pacific Co/Avtec VPGate	360 875-9444	Pacific County Telecommunications

Transportable/Mobile Gateways

Name/Gateway Type	24 Hr. #	Agency
Pacific Co/Avtec Frontier	360 875-9444	Pacific County Telecommunications

Repeaters

Fixed Repeaters

Name/Agency	24 Hr. #	Frequency			
		Rx	Rx Tone	Tx	Tx Tone
Holy Cross-Law North/Pacific County	360 875-9444	465.0750	74.4	460.0750	136.5
KO Mountain-Law North/Pacific County	360 875-9444	465.0750	123.0	460.0750	136.5
Naselle-Law North/Pacific County	360 875-9444	465.0750	97.4	460.0750	136.5
Megler-Law North/Pacific County	360 875-9444	465.0750	110.9	460.0750	136.5
Megler-Law South/Pacific County	360 875-9444	465.2250	110.9	460.2250	136.5
North Cove-Law South/Pacific County	360 875-9444	465.2250	123.0	460.2250	136.5
Holy Cross-Fire North/Pacific County	360 875-9444	154.1900	127.3	154.1900	127.3
KO-Fire North/Pacific County	360 875-9444	154.1900	127.3	154.1900	127.3
Naselle-Fire North/Pacific County	360 875-9444	154.1900	127.3	154.1900	127.3
Megler-Fire North/Pacific County	360 875-9444	154.1900	127.3	154.1900	127.3
North Cove-Fire North/Pacific County	360 875-9444	154.1900	127.3	154.1900	127.3
Megler-Fire South/Pacific County	360 875-9444	158.7750	100.0	155.1450	127.3

Transportable/Mobile Repeaters

Name/Agency	24 Hr. #	Band	Qty
Raymond Fire Department/5530	360 581-7960/360 942-4144	2 Meter	1
Pacific County Emergency Management Agency	360 214-1046	70CM	1

Mobile Communications Units (MCU)

Unit ID/Designator	Agency/Location	24 Hr. #
MCU/E103	PCEMA 300 Memorial Drive, South Bend, WA 98586	360 214-1046
6E1/E101	PCEMA 300 Memorial Drive, South Bend, WA 98586	360 214-1046

Auxiliary Communications (AUXCOMM) Frequencies

Ch Config	Name	Primary Use	Frequency		Tone
			Rx	Tx	Rx/Tx
70CM	BeachNet Holy X	Command	440.6750 W	445.6750 W	118.8
2 MTR	BeachNet Megler	Command	147.1800 W	147.7800 W	82.5
70CM	BeachNet Long Beach	Command	448.8000 W	449.8000 W	118.8
2 MTR	South Bend Simplex	Command	146.5500 W	146.5500 W	CSQ
2 MTR	Long Beach Simplex	Tactical	146.5800 W	146.5800 W	CSQ
2 MTR	Holy Cross BeachNet		147.3400	147.9400	118.8
70CM	Naselle BeachNet		440.6750	445.6750	118.8
70CM	KO Peak BeachNet		441.6750	446.6750	118.8
2 MTR	North Cove BeachNet		145.3100	145.9100	118.8
2 MTR	VARA FM	Digital Messaging	145.0100 W	145.0100 W	CSQ
2 MTR	PACKET	Digital Messaging	145.6300 W	145.6300 W	CSQ
220	PACCO Primary	Command	224.0400 W	229.0400 W	118.8
220	PACCO Secondary	Tactical	224.8200 W	224.8200 W	118.8
80 MTR	STATE EOC	Tactical	3.9850 W	3.9850 W	CSQ
40 MTR	STATE EOC	Tactical	7.2550 W	7.2550 W	CSQ
60 MTR	Ch. 1	Tactical	5330.5000 W	5330.5000W	CSQ
60 MTR	Ch. 2	Tactical	5346.5000 W	5346.5000 W	CSQ

BeachNet contact phone 360 214-1046

Interoperable Channels Frequencies

VHF/UHF Interoperable Infrastructure

Name	Primary Use	Frequency			
		Rx	RX Tone	Tx	Tx Tone
REDNET	Mutual Fire & Aid/Multi-agency	153.8300	CSQ	153.8300	CSQ
VTAC11	Federal/Multi-agency	151.1375	156.7	151.1375	156.7
LERN	Law Enforcement-Multi-agency	155.3700	CSQ	155.3700	100.0

Pend Oreille County

Contact Name:	Steve West
Title:	911 Coordinator
Address:	331 S. Garden Ave. Newport Washington 99156
Office Phone:	509 447-3151
24/7 Phone:	509 447-1980

E-Mail:	swest@pendoreille.org
---------	--

Agency:	Pend Oreille County Emergency Management
Contact Name:	JoAnn Boggs
Title:	Deputy Director
Address:	101 S. Garden Ave. Newport Washington 99156
Office Phone:	509 447-3731
24/7 Phone:	509 447-1980
E-Mail:	jboggs@pendoreille.org

Local Dispatch Centers/Emergency Management

Agency	Location	24 Hour #
Pend Oreille County 911	331 S. Garden Ave. Newport Washington 99156	509 447-1980
Pend Oreille Co. Emergency Management	101 S. Garden Ave. Newport Washington 99156	509 447-1980

Repeaters

Fixed Repeaters

Name/Agency L	24 Hr. #	Frequency			
		Rx	NAC	Tx	NAC
Hoodoo Mountain - LAW	509 447-1980	154.8225	\$146	155.6850	\$110
Calispel Peak - LAW	509 447-1980	154.7175	\$146	155.6850	\$110
Abercrombie Mt. - LAW	509 447-1980	154.9800	\$146	155.6850	\$110
Hoodoo Mountain - FIRE	509 447-1980	158.7525	\$100	154.2650	\$100
Calispel Peak - FIRE	509 447-1980	154.0325	\$156	151.4000	\$156
Abercrombie Mt. - FIRE	509 447-1980	154.0850	\$179	156.0525	\$179

Mobile Communications Units (MCU)

Unit ID/Designator	Agency/Location	24 Hr. #
POC Mobile Command Vehicle	Pend Oreille County DEM Newport Washington	509 447-1980

Interoperable Channels Frequencies

VHF/UHF Interoperable Infrastructure

Name	Primary Use	Frequency			
		Rx	RX Tone	Tx	Tx Tone
LERN	Mutual Aid	155.3700	CSQ	155.3700	103.5
WSP	Mutual Aid	155.9700	CSQ	158.7900	156.7
U.S. Border Patrol	Mutual Aid	163.6250	\$305	162.8250	\$329
Port of Entry Metaline Falls	Mutual Aid	151.1375	\$F7E	151.1375	\$293
REDNET	Mutual Aid	153.8300	CSQ	153.8300	156.7
OSCAR	Mutual Aid	156.1350	CSQ	156.1350	CSQ

Pierce County

Agency:	Pierce County Department of Emergency Management
Contact Name:	Rich Huisingh
Title:	Division Manager
Address:	11421 Bob Findlay Road East Tacoma WA 98445
Office Phone:	(253) 798-7011
24/7 Phone:	(253) 798-7111
E-Mail:	Richard.huisingh@piercecounitywa.gov

Local Dispatch Centers/Emergency Management

Agency	Location	24 Hour #
South Sound 911 (SS911)	3580 Pacific Avenue, Tacoma, WA 98418	253-287-4455
Pierce County Department of Emergency Management	2501 S. 35 th Street Tacoma WA 98409	253-798-7470

Gateways

Fixed Gateways

Name/Gateway Type	24 Hr. #	Agency
ISSI to WSP		Pierce County
ISSI to City of Tacoma		Pierce County
ISSI to TComm		Pierce County

Radio Cache

Name/Agency	24 Hr. #	Make/Mode (Qty)	Band
Pierce Co. DEM	253-798-7470	Kenwood TK290 (30)	VHF
Pierce Co. DEM	253-798-7470	Motorola APX7000 (40)	700/800/VHF

Mobile Communications Units (MCU)

Unit ID/Designator	Agency/Location	24 Hr. #
Box Trailer w/Telescopic Tower	Pierce Co. CSD/11421 Bob Findlay Rd, Tacoma, WA	253-798-7470
Telescopic Tower on a Trailer	Pierce Co. CSD/11421 Bob Findlay Rd, Tacoma, WA	253-798-7470

Interoperable Channels Frequencies

VHF/UHF Interoperable Infrastructure

Name	Primary Use	Frequency			
		Rx	Rx Tone	Tx	Tx Tone
MAC	Mutual Aid Channel – Repeated Simulcast	151.3550	167.9	156.0600	167.9
410 MUTAID	HWY 410 Mutual Aid – Simulcast	155.6400	179.9	159.1650	179.9
LERN	Law Enforcement Radio Network – Rx Voted Simplex	155.3700	100.0	155.3700	100.0
WSP Interop	WSP Interop – Repeater Simulcast Hwy 410	154.7100	100.0	158.8800	100.0

PCS Interop	PCS Interop - Repeated simulcast	159.0300	179.9	154.9500	156.7
Fire Mutual Aid	Fire Mutual Aid (simplex)	154.1600	none	154.1600	131.8

700/800 MHz Interoperable Infrastructure

Name	Primary Use/Locations	Frequency			
		Rx	RX Tone	Tx	Tx Tone
7CALL70	3 Sisters	773.25625	None	803.25625	None
7TAC71	Dupont	773.10625	None	803.10625	None
7TAC72	Indian Hill 2	773.60625	None	803.60625	None
7TAC75	Sparpole Hill	773.75625	None	803.75625	None
7FIRE84	Graham Hill	773.85625	None	803.85625	None
7LAW81	Graham Hill	774.00625	None	804.00625	None

700MHz Interoperability Talkgroups

Chan	Pierce County	Tacoma/Puyallup
1	PC CALL 1	MA PC1
2	PC IOP 2	MA PC2
3	PC IOP 3	PSOPS3
4	PC FIR 4	PSOPS4
5	PC FIR 5	PCLERN
6	PC FIR 6	ST OPS1D
7	PC FIR 7	ST OPS2D
8	PC FIR 8	7CALL70*
9	PC LE 9	7TAC71*
10	PC LE 10	7TAC72*
11	PC LE 11	7TAC75*
12	PC LE 12	7LAW81*
13	PC LE 13	7FIRE84*
14	PC LE 14	7FIRE84*
15	PC L/F 15	7FIRE84*
16	PC EMERP	TP EMERP

San Juan County

Agency:	San Juan County Department of Emergency Management
Contact Name:	Brendan Cowan
Title:	Director
Address:	96 N. 2 nd Street, Friday Harbor, WA 98250
Office Phone:	360 370-7612
24/7 Phone:	360 378-4151
E-Mail:	brendanc@sanjuancountywa.gov

Agency:	San Juan County Department of Emergency Management
Contact Name:	Dave Halloran
Title:	Assistant Director
Address:	531 Fern Street, Eastsound, WA 98245
Office Phone:	260-370-0587
24/7 Phone:	360 378-4151
E-Mail:	daveh@sanjuancountywa.gov

Local Dispatch Centers/Emergency Management

Agency	Location	24 Hour #
San Juan County Sheriff’s Office	Friday Harbor	360 378-4151
San Juan County Dept. of Emergency Management	Friday Harbor	360 370-7612

Auxiliary Communications (AUXCOMM) Frequencies

Ch Config	Name	Primary Use	Frequency		Tone
			Rx	Tx	Rx/Tx
144	CADY-11	Primary	146.7000 W	146.1000 W	131.8/131.6
223	CONY-11	Region 1. (CADY link available)	223.4800 W	222.8800 W	103.5/103.5
440	CADY-41	Primary with CADY-11	443.4500 W	448.4500 W	103.5/103.5
460	ORCAS GMRS	Family/EMCOMM	462.5750 W	467.5750 W	100.0/141.3

Interoperable Channels Frequencies

VHF/UHF Interoperable Infrastructure

Name	Primary Use	Frequency			
		Rx	RX Tone	Tx	Tx Tone
REDNET	State Fire Control Channel, Resource Mobilization	153.8300	CSQ	153.8300	CSQ
SAR	Search and Rescue only	155.1600	CSQ	155.1600	CSQ
OSCCR	On-Scene Command and Coordination	156.1350	CSQ	156.1350	CSQ
UCALL40D	Interoperability Hailing	453.2125	156.7	453.2125	156.7

Skagit County

Agency:	Skagit 911
Contact Name:	Mike Voss
Title:	Technical Services Manager
Address:	2911 E College Way, Mount Vernon, WA 98273
Office Phone:	360 428-3206
24/7 Phone:	360 770-8915 – 360 982-8105
E-Mail:	vossmi@skagit911.us

Agency:	Skagit 911
Contact Name:	Ed Oldham

Title:	Senior Radio Technician
Address:	2911 E College Way, Mount Vernon, WA 98273
Office Phone:	360 428-3269
24/7 Phone:	360 899-6479
E-Mail:	oldhame@skagit911.us

Local Dispatch Centers/Emergency Management

Agency	Location	24 Hour #
Skagit 911	2911 E College Way, Mount Vernon, WA 98273	360 428-3230
Skagit County DEM	2911 E College Way, Mount Vernon, WA 98273	360 428-3230

Non-Government Contact Information

Agency	24 Hr. #
American Red Cross	1-833-583-3111

Shared Systems

System Name	Agency	Freq	24 Hr. #
Skagit Public Safety Communications System	Skagit 911	UHF/VHF Multi-Site Voted/Simulcast	360 428-3230

Gateways

Transportable/Mobile Gateways

Name/Gateway Type	24 Hr. #	Agency
ICRI 1	360 428-3230	Skagit County DEM
ICRI 2	360 428-3230	Skagit County DEM

Repeaters

Transportable/Mobile Repeaters

Name/Agency	24 Hr. #	Band	Qty
VHF – with UHF Drop Link – Daniels – Kit Includes Antennas, Mast, Guy Kit, Battery, and Solar Panel.	360 428-3230	VHF	3

Radio Cache

Name/Agency	24 Hr. #	Make/Mode (Qty)	Band
Skagit County DEM	360 428-3230	Various	VHF

Mobile Communications Units (MCU)

Unit ID/Designator	Agency/Location	24 Hr. #
MCU 1	Skagit County DEM (Starlink Satellite Capabilities)	

Interoperable Channels Frequencies

VHF/UHF Interoperable Infrastructure

Name	Primary Use	Frequency			
		Rx	RX Tone	Tx	Tx Tone
SCDEM – Voted Simulcast - Analog	Command and Control	155.3100	141.3	151.0550	141.3
LETAC 1 – Voted Simulcast - Analog	Law Operations	460.1375	136.5	465.1375	156.7
FTAC 9 – Voted Simulcast - Analog	Fire Operations	155.6325	151.4	158.9925	110.9

Skamania County

Agency:	Skamania County
Contact Name:	Summer Scheyer
Title:	Sheriff
Address:	200 Vancouver Ave. Stevenson WA 98646
Office Phone:	509 427-9490
24/7 Phone:	509 427-2011
E-Mail:	summers@co.skamania.wa.us

Agency:	Skamania County Emergency Management
Contact Name:	Barbara Ayers
Title:	Emergency Manager
Address:	200 Vancouver Ave. Stevenson WA 98646
Office Phone:	509 427-8076
24/7 Phone:	360 749-1210
E-Mail:	ayers@co.skamania.wa.us

Local Dispatch Centers/Emergency Management

Agency	Location	24 Hour #
Skamania County 911 Dispatch	200 Vancouver Ave Stevenson WA 98646	509 427-9490 x0

Non-Government Contact Information

Agency	24 Hr. #
Skamania County EOC volunteer / Amateur Radio Emergency Services (SCARES)	360 903-4575

Gateways

Transportable/Mobile Gateways

Name/Gateway Type	24 Hr. #	Agency
StarLink/Internet		Skamania County Emergency Management

Repeaters

Fixed Repeaters

Name/Agency	24 Hr. #	Frequency			
		Rx (MHz)	Rx Tone	Tx (MHz)	Tx Tone
Augspurger/Amateur Radio	360 903-4575	440.325	NA	445.325	100Hz

Auxiliary Communications (AUXCOMM) Frequencies

Ch Config	Name	Primary Use	Frequency		Tone
			Rx (MHz)	Tx (MHz)	Rx/Tx
2 MTR	Skamania EOC Simplex Primary	AUXCOMM Simplex Primary 2M Frequency	146.6000	146.6000	NA/NA
70 CM	Augspurger	AUXCOMM Primary Repeater Frequency	440.3250	445.3250	NA/100Hz
2 MTR	Skamania EOC Secondary 2M	AUXCOM Secondary 2M Simplex Frequency	146.5500	146.5500	NA/NA
70 CM	Skamania EOC Alternate 70CM	AUXCOM Alternate 70CM Simplex	445.0000	445.0000	NA/NA
2 MTR	7 Mile Hill Repeater	AUXCOM Alternate 2M Rpt	147.2000	147.8000	NA/100Hz
2 MTR	Red Mt. Repeater	AUXCOM Alternate 2M Rpt	145.2500	144.6500	NA/186.2Hz
2 MTR	AE7UR-10 2M RMS Node (private)	2m WinLink RMS Node	144.9400	144.9400	NA/NA
70 CM	KE7FUW Larch Mt Rpt	Region 4 Coordination Net	443.675	448.675	NA/107.2Hz
HF SSB/Data	60 Meter Channel 1	60 Meter Interop	5.3570	5.3570	NA/NA
HF SSB/Data	60 Meter Channel 2	60 Meter Interop	5.3465	5.3465	NA/NA
HF SSB/Data	60 Meter Channel 4	60 Meter Interop	5.3715	5.3715	NA/NA
HF SSB/Data	60 Meter Channel 5	60 Meter Interop	5.4035	5.4035	NA/NA
HF SSB/Data	WSEN Primary	80 MTR WSEN	3.9850	3.9850	NA/NA
HF SSB/Data	WSEN Secondary	80 MTR WSEN	3.9900	3.9900	NA/NA
HF SSB/Data	WSEN Alternate	80 MTR WSEN	3.9950	3.9950	NA/NA

Interoperable Channels Frequencies

VHF/UHF Interoperable Infrastructure

Name	Primary Use	Frequency			
		Rx (MHz)	RX Tone	Tx (MHz)	Tx Tone
SAR Primary	Search and Rescue	155.16	NA	155.16	NA
SAR Sec	Search and Rescue	155.2650	100Hz	155.2650	100Hz
REDNET	REDNET (Fire/EMS)	153.8300	127.3Hz	153.8300	127.3Hz
LERN	LERN	155.3700	100Hz	155.3700	100Hz

Snohomish County

Agency:	Snohomish County 911
Contact Name:	Howard Tucker
Title:	Radio Systems Manager
Address:	332 SW Everett Mall Way, Everett, WA, 98204
Office Phone:	
24/7 Phone:	360 722-0522
E-Mail:	htucker@sno911.org

Agency:	Snohomish County Department of Emergency Management
URL	https://www.snodem.org
Contact Name:	Scott Honaker
Title:	Communications Coordinator
Address:	720 80 TH St SW, Building A, Everett, WA 98203
Office Phone:	425 330-5439
24/7 Phone:	425 320-9189
E-Mail:	Scott.Honaker@snoco.org

Local Dispatch Centers/Emergency Management

Agency	Location	24 Hour #
Sno911 Non-Emergency	332 SW Everett Mall Way, Everett, WA 98204	425 407-3999
Snohomish Co Emergency Management	720 80th St SW, Bldg A, Everett, WA 98203	425 320-9189

Non-Government Contact Information

Agency	24 Hr. #
American Red Cross	1-833-583-3111

Shared Systems

System Name	Agency	Freq	24 Hr. #
Sno911 Wireless	Snohomish County 911	Motorola ASTRO25 800 MHz trunked with VHF/UHF IO	425 407-3999

Gateways

Fixed Gateways

Name/Gateway Type	24 Hr. #	Agency
Snohomish DEM/ACU-1000	425 320-9189	Snohomish Co. DEM

Transportable/Mobile Gateways

Name/Gateway Type	24 Hr. #	Agency
Snohomish Co./ACU-1000	425 407-3999	Snohomish 911
DEM10/ACU-M	425 320-9189	Snohomish Co. DEM

COM1/ACU-1000	425 320-9189	Snohomish Co. DEM
COM2/ACU-1000	425 320-9189	Snohomish Co. DEM

Repeaters

Fixed Repeaters

Name/Agency	24 Hr. #	Frequency			
		Rx	Rx Tone	Tx	Tx Tone
DEM Clearview/Snohomish DEM	425 320-9189	154.0550 N	127.3	158.8500 N	114.8
DEM Oso/Snohomish DEM	425 320-9189	154.0550 N	127.3	158.8500 N	103.5
DEM Whidbey/Snohomish DEM	425 320-9189	154.0550 N	127.3	158.8500 N	127.3

Transportable/Mobile Repeaters

Name/Agency	24 Hr. #	Band	Qty
Snohomish Co. DEM VHF	425 320-9189	VHF High	1
VTAC 36/Snohomish Co. DEM	425 320-9189	VHF High	1
UTAC 43/Snohomish Co. DEM	425 320-9189	UHF	1
443.000 Shared Non-Protected/Snohomish Co. DEM	425 320-9189	70cm Ham	1

Radio Cache

Name/Agency	24 Hr. #	Make/Mode (Qty)	Band
Snohomish 911		Motorola APX8000 (50)	700/800
Snohomish Co. DEM	425 320-9189	Motorola APX8000 (40)	700/800
Snohomish Co. DEM	425 320-9189	Anytone AT-D878 (24)	VHF/UHF
Snohomish Co. DEM	425 320-9189	Motorola HT1250 (15)	UHF

Mobile Communications Units (MCU)

Unit ID/Designator	Agency/Location	24 Hr. #
COM1/COM2	Snohomish Co. DEM/720 80th St SW, Everett, WA	425 320-9189
IMT Trailer	Snohomish Co. DEM/720 80th St SW, Everett, WA	425 320-9189

Auxiliary Communications (AUXCOMM) Frequencies

Ch Config	Name	Primary Use	Frequency		Tone
			Rx	Tx	Rx/Tx
2 MTR	GRANIT	County Primary/Calling	146.9250 N	146.3250 N	156.7
2 MTR	LYNNWD	County Backup	146.7750 N	146.1750 N	156.7
2 MTR	SNOSX1	Sno ACS Simplex	144.4600 W	144.4600 W	123.0
70CM	SNOSX4	Sno ACS Simplex	438.5000 W	438.5000 W	103.5
222 MHz	FIRET2	Marysville	224.3800 W	222.7800 W	103.5
2 MTR	EVERT1	Everett	147.1800 W	147.7800 W	103.5
70CM	EVERT4	Everett	444.5750 W	449.5750 W	103.5
2 MTR	MSVL1	Marysville ACS Primary	147.3800 N	147.9800 N	156.7
70CM	MSVL4	Marysville ACS Backup	442.7000 N	447.7000 N	156.7
70CM	BARLOW	Mountain Loop	442.8000 W	447.8000 W	173.8
70CM	CLEARV	Clearview	442.9750 N	447.9750 N	156.7

Ch Config	Name	Primary Use	Frequency		Tone
			Rx	Tx	Rx/Tx
70CM	MTLAKE	Mountlake Terrace	443.7250 N	448.7250 N	156.7
70CM	SWEDSH	Swedish Edmonds	444.0250 N	449.0250 N	156.7
70CM	FIRE4	Marysville	444.2000 N	449.2000 N	156.7
70CM	SAUK	Darrington	444.3000 N	448.3000 N	156.7

Interoperable Channels Frequencies

VHF/UHF Interoperable Infrastructure

Name	Primary Use	Frequency			
		Rx	RX Tone	Tx	Tx Tone
SNO UHF IO	Mutual Aid/Repeated/Simulcast/Voted Receive	453.3500 N	127.3	458.3500 N	127.3
770FTAC	Fire Tac Mutual Aid/Simulcast/Voted Receive	153.7700 N	127.3	153.7700 N	127.3
LERN	Mutual Aid/Simulcast/Voted Receive	155.3700 N	CSQ	155.3700 N	100.0

700/800 MHz Interoperable Infrastructure

Name	Primary Use/Locations	Frequency			
		Rx	RX Tone	Tx	Tx Tone
8CALL90	Lynnwood, Monroe, Index, Oso, Darrington Simulcast	851.0125 W	156.7	806.0125 W	156.7
8TAC91	Lynnwood	851.5125 W	156.7	806.5125 W	156.7
8TAC92	Monroe	852.0125 W	156.7	807.0125 W	156.7
8TAC93	Darrington	852.5125 W	156.7	807.5125 W	156.7
8TAC94	Oso and Index	853.0125 W	156.7	808.0125 W	156.7

800MHz Interoperability Talkgroups

Chan	Snohomish County Talkgroup
1	SNO CALL
2	SNO IO 02
3	SNO IO 03
4	SNO IO 04
5	SNO IO 05
6	SNO IO 06
7	SNO IO 07
8	SNO IO 08
9	SNO IO 09
10	SNO IO 10
11	SNO IO 11
12	SNO IO 12
13	SNO IO 13
14	SNO IO 14
15	SNO IO 15
16	SNO EM P/SNO EM F

Spokane County

Agency:	Spokane Regional Emergency Communications
Contact Name:	
Title:	
Address:	1121 W Gardner Ave
Office Phone:	
24/7 Phone:	
E-Mail:	

Agency:	Spokane County Emergency Management
Contact Name:	Braden Mathews
Title:	Communications Specialist
Address:	1121 W Gardner Ave
Office Phone:	509 477-7613
24/7 Phone:	509 477-3009
E-Mail:	BMathews@spokanecounty.gov

Shared Systems

System Name	Agency	Freq	24 Hr. #
SECURE	EMD		253 512-7176
WSP Radio	WSP		509 227-6650
WSDOT Radio IT/Wireless Technology	WSDOT		509 343-6402
DNR Radio	DNR		360 902-1480
Spokane Valley Fire	Spokane Valley Fire		
Department of Enterprise Services Capitol Complex Radio	DES		
WILDCOMM	DFW		

Gateways

Fixed Gateways

Name/Gateway Type	24 Hr. #	Agency
Spokane Valley Fire		Spokane Valley Fire

Radio Cache

Name/Agency	24 Hr. #	Make/Mode (Qty)	Band
Spokane County Regional Emergency Communications	509 532-8900	Bendix King	UHF

Stevens County

Agency:	Stevens County 911
Contact Name:	Donnie Nigg
Title:	Communications Coordinator
Address:	270 E Birch Ave, Colville, WA 99114
Office Phone:	(509) 685-2836
24/7 Phone:	(509) 684-2555
E-Mail:	dnigg@stevenscountywa.gov/e911@stevenscountywa.gov

Agency:	Stevens County Emergency Management
Contact Name:	Adenea Sellers
Title:	Director of Emergency Management
Address:	PO Box 186, Colville WA, 99114
Office Phone:	509 684-7543
24/7 Phone:	509 684-2555
E-Mail:	asellers@stevenscountywa.gov

Local Dispatch Centers/Emergency Management

Agency	Location	24 Hour #
Stevens County 911	270 E BIRCH, COLVILLE WA 99114	(509) 684-2555
Stevens County Emergency Management	Colville, WA	(509) 684-7563

Gateways

Fixed Gateways

Name/Gateway Type	24 Hr. #	Agency
AT&T FirstNet		Stevens County 911

Repeaters

Fixed Repeaters

Name/Agency	24 Hr. #	Frequency			
		Rx	Rx Tone	Tx	Tx Tone
CNTL 1		155.6700	110.9	153.9650	179.9
CNTL 2		159.1950	110.9	154.7475	203.5
S Fire		153.7850	118.8	154.4150	127.3
N Fire		154.1450	127.3	154.4000	127.3

Interoperable Channels Frequencies

VHF/UHF Interoperable Infrastructure

Name	Primary Use	Frequency			
		Rx	RX Tone	Tx	Tx Tone

LERN	Law Enforcement Interop	155.37	CSQ	155.37	103.5
------	-------------------------	--------	-----	--------	-------

Thurston County

Agency:	Thurston County Emergency Management
Contact Name:	Michelle Price
Title:	Emergency Management Coordinator
Address:	9521 Tilley Road Southwest, Olympia, WA 98512
Office Phone:	360 867-2825
24/7 Phone:	360 867-2800
E-Mail:	Michelle.price@co.thurston.wa.us

Agency:	Thurston 911 Communications (TCOMM911)
Contact Name:	David Taylor
Title:	Radio Systems Manager
Address:	2703 Pacific Ave SE, Olympia, WA 98501
Office Phone:	360 704-2736
24/7 Phone:	360 704-2740
E-Mail:	David.taylor@tcomm911.org

Agency:	Thurston County Department of Emergency Management
Contact Name:	Sonya Kroese
Title:	Emergency Management Coordinator
Address:	9521 Tilley Road Southwest, Olympia, WA 98512
Office Phone:	360 867-2817
24/7 Phone:	360 280-3993
E-Mail:	sonya.kroese@co.thurston.wa.us

Local Dispatch Centers/Emergency Management

Agency	Location	24 Hour #
Thurston 911 Communications (TCOMM911) (Non-Emergency)	2703 Pacific Ave SE, Olympia, WA 98501	360 704-2740
Thurston County Emergency Management	9521 Tilley Road Southwest, Olympia, WA 98512	360 867-2800

Shared Systems

System Name	Agency	Freq	24 Hr. #
Thurston County Emergency Radio Network (TCERN)	Thurston 911 Communications (TCOMM911)	Motorola Astro (Phase 2) 700 MHz Trunked with VHF Interop Channels	360 704-2740

Repeaters

Fixed Repeaters

Name	Primary Use/Locations	Frequency			
		Rx	RX Tone	Tx	Tx Tone
7CALL50	Capitol Peak / Thurston (APCO P25 Phase 1)	769.24375	\$F7E	799.24375	\$293
7LAW62	Olympia (8 th /Fir) (APCO P25 Phase 1)	770.49375	\$F7E	800.49375	\$293
7FIRE64	Capitol Peak/ Thurston (APCO P25 Phase 1)	769.99375	\$F7E	799.99375	\$293
7MED66	Olympia (8 th /Fir) (APCO P25 Phase 1)	769.49375	\$F7E	799.49375	\$293
7TAC74	Capitol Peak/ Thurston (APCO P25 Phase 1)	774.60625	\$F7E	804.60625	\$293

Auxiliary Communications (AUXCOMM) Frequencies

Ch Config	Name	Primary Use	Frequency		Tone
			Rx	Tx	Rx/Tx
2 MTR Amateur	OARS VHF Olympia	ARES PRIMARY	147.3600	147.9600	103.5 Hz
220 MHZ Amateur	OARS 220 Crawford Mtn.	PACKET OPERATIONS	224.4600	222.8600	103.5 Hz
70 CM Amateur	OARS UHF Crawford Mtn.	ARES SECONDARY	441.4000	446.5000	103.5 Hz

Interoperable Channels Frequencies

VHF/UHF Interoperable Infrastructure

Name	Primary Use	Frequency			
		Rx	RX Tone	Tx	Tx Tone
FIRE 5	Fire Mutual Aid/ Interop. Repeated/Simulcast/Voted	154.0100	203.5 Hz	150.7750	203.5 Hz
FIRE 6	Fire Mutual Aid / Interop. Repeated/Simulcast/Voted	154.1750	77.0 Hz	150.8050	77.0 Hz
TAC 1	Law Mutual Aid / Interop. Repeated/Simulcast/Voted	155.5500	136.5 Hz	154.8300	136.5 Hz
VTAC11	Federal VHF interop (Crawford Mtn.)	151.1375	156.7 Hz	151.1375	156.7 Hz
LERN	Law Enforcement Radio Network, Mutual Aid/Interop	155.3700	100.0	155.3700	100.0 Hz

700/800 MHz Interoperable Infrastructure (TCERN Trunked Radio System)

Talkgroup Name	Usage	Talkgroup ID			
		Decimal	Hex	Encryption Key	Used By
TC Iop1 @ TC	TCERN Interop ALL	80050203	C41B	Clear	
TcLelop2 @ TC	TCERN Interop Law	80050204	C41C	Yes/ XXXXXX	
TCEmOps1@TC	Thurston Emergency Mngmt.	80050110	C3BE	Clear	TCEM
TC EM Ops2	Thurston Emergency Mngmt.	80050111	C3BF	Clear	TCEM

Wahkiakum County

Agency:	Wahkiakum County Sheriff's Office - 911
Contact Name:	Joannie Kuhlmeier
Title:	Chief Civil Deputy
Address:	64 Main St, Cathlamet, WA 98612
Office Phone:	360 795-3242
24/7 Phone:	360 795-3242

E-Mail:	kuhlmeyerj@co.wahkiakum.wa.us
---------	--

Agency:	Wahkiakum County Sheriff’s Office
Contact Name:	Beau Renfro
Title:	Emergency Technology Coordinator
Address:	64 Main St, Cathlamet, WA 98612
Office Phone:	360 795-7878
24/7 Phone:	360 795-3242
E-Mail:	renfrob@co.wahkiakum.wa.us

Agency:	Wahkiakum County Department of Emergency Management (DEM)
Contact Name:	Austin Smith
Title:	Emergency Management Coordinator
Address:	64 Main St, Cathlamet, WA 98612
Office Phone:	360 795-7876
24/7 Phone:	360 957-3724 (Cell)
E-Mail:	em@co.wahkiakum.wa.us

Local Dispatch Centers/Emergency Management

Agency	Location	24 Hour #
Wahkiakum County Sheriff’s Office – 911	64 Main St, Cathlamet, WA 98612	360 795-3242
Wahkiakum County Department of Emergency Management	64 Main St, Cathlamet, WA 98612	360 795-7876

Repeaters

Fixed Repeaters

Name/Agency	24 Hr. #	Frequency			
		Rx	Rx Tone	Tx	Tx Tone
Sheriff	360 795-3242	150.8525	162.2	154.5475	162.2
Fire/EMS	360 795-3242	152.4125	141.3	157.6725	141.3
Public Works	360 795-3242	151.7225	199.5	158.1375	199.5
Operations	360 795-3242	151.6775	131.8	157.4850	131.8
Transit/School	360 795-3242	153.0125	177.3	159.6225	177.3

Radio Cache

Name/Agency	24 Hr. #	Make/Mode (Qty)	Band
Wahkiakum County Sheriff’s Office	360 795-3242	Kenwood NX-5200 (10)	VHF

Mobile Communications Units (MCU)

Unit ID/Designator	Agency/Location	24 Hr. #
SAR/COM Trailer	Wahkiakum County DEM/73 Elochoman Valley Rd, Cathlamet, WA 98612	360 795-7876

Interoperable Channels Frequencies*VHF/UHF Interoperable Infrastructure*

Name	Primary Use	Frequency			
		Rx	RX Tone	Tx	Tx Tone
VCALL10	NIFOG – Simplex (Calling)	155.7525	156.7	155.7525	156.7
VTAC11	NIFOG – Simplex (Tactical)	151.1375	156.7	151.1375	156.7
VTAC12	NIFOG – Simplex (Tactical)	154.4525	156.7	154.4525	156.7
VTAC13	NIFOG – Simplex (Tactical)	158.7375	156.7	158.7375	156.7
VTAC14	NIFOG – Simplex (Tactical)	159.4725	156.7	159.4725	156.7
Clark Control 8	Patch to CRESA 800 MHz P25 Trunked System	154.3700	127.3	155.7825	127.3
LERN	Law Enforcement Mutual Aid - Simplex	155.3700	100.0	155.3700	100.0
REDNET	Fire Mutual Aid - Simplex	153.8300	CSQ	153.8300	156.7
OSCCR	On-Scene Command & Coordination - Simplex	156.1350	CSQ	156.1350	203.5

Walla Walla County

Agency:	Walla Walla Emergency Service Communications (WESCOM)
Contact Name:	Esther Click
Title:	WESCOM Manager
Address:	27 N 2 nd
Office Phone:	509.527.1959
24/7 Phone:	509.527.1960
E-Mail:	eclick@wallawallawa.gov

Agency:	Walla Walla County Emergency Management
Contact Name:	Chris Lee
Title:	Emergency Management Director
Address:	27 N 2 nd
Office Phone:	509.524.2900
24/7 Phone:	509.527.1960
E-Mail:	clee@wwcowa.gov

Local Dispatch Centers/Emergency Management

Agency	Location	24 Hour #
WESCOM	27 N 2 nd Ave	509.527.1960
Walla Walla County EM	27 N 2 nd Ave	509.527.1960
Walla Walla Fire Department	200 S 12 th Ave	509.527.4429
College Place Fire Department	629 S College Ave, College Place	509.529.6506
Walla Walla County Fire District 4	2251 Howard St	509.529.1282

Walla Walla County Fire District 5	460 W Humorist Rd, Burbank	509.547.8341
Walla Walla County Fire District 6	795 McKay Rd	509.520.2429
Walla Walla County Fire District 8	10127 E Highway 12, Dixie	509.525.0938
North County Fire District	PO Box 10, Prescott	509.629.2353
Walla Walla Police Department	54 E Moore St	509.527.1960
Walla Walla County Sheriff’s Office	240 W Alder St	509.527.3265
College Place Police Department	619 S College Ave, College Place	509.525.7773
Walla Walla Public Works	55 E Moore St	509.527.4463
Walla Walla County Public Works	990 Navion Ln	509.540.0927

Non-Government Contact Information

Agency	24 Hr. #
American Red Cross	509 205-0743
Walla Walla ARES Ham Radio – Mikel Potts	509 386-9707
LifeFlight Network	800 232-0911
Pacific Power Corp – Walla Walla	509 525-2340
Columbia REA – Walla Walla	509 526-4041
Valley Transit – Public Bus/Transpiration	509 525-9140
Providence St. Mary Medical Center	509 897-3320
Walla Walla Public Schools	509 527-3000

Shared Systems

System Name	Agency	Freq	24 Hr. #
LERN	Washington State Patrol	155.3700	800 283-7803

Gateways

Transportable/Mobile Gateways

Name/Gateway Type	24 Hr. #	Agency
Starlink (3x)	509 527-1960	Walla Walla County EM

Repeaters

Fixed Repeaters

Name/Agency	24 Hr. #	Frequency			
		Rx	Rx Tone	Tx	Tx Tone
County Simulcast - Law Primary	509 527-1960	155.2500	162.2	155.6850	162.2
County Simulcast - Fire Primary	509 527-1960	154.4300	151.4	155.8050	151.4
County Simulcast - Fire/Law Common	509 527-1960	156.0450	173.8	154.0250	173.8
Valley Geographical	509 527-1960	155.1300	151.4	159.0525	151.4
Hair Geographical	509 527-1960	155.1300	151.4	159.0525	162.2
Coppei Geographical	509 527-1960	154.2950	103.5	158.8800	103.5
Pikes Geographical	509 527-1960	154.3325	151.4	159.2100	151.4
Wallula Geographical	509 527-1960	154.3700	173.8	159.0000	173.8
Eureka Geographical	509 527-1960	159.1725	173.8	155.7900	173.8

City of WW Public Works – Tablerock	509 527-1960	155.8650	123.0	153.9950	146.2
-------------------------------------	--------------	----------	-------	----------	-------

Transportable/Mobile Repeaters

Name/Agency	24 Hr. #	Band	Qty
Walla Walla County Fire District 4	509 540-4550	VHF-High	4
North County Fire District	509 527-1960	VHF-High	1
College Place Fire Department	509 529-6506	VHF-High	2

Radio Cache

Name/Agency	24 Hr. #	Make/Mode (Qty)	Band
Walla Walla County Emergency Management	509 527-1960	BK BKR5000	20
College Place Fire Department, IMT Trailer	509 529-6506	BK KNG2-P150	20

Mobile Communications Units (MCU)

Unit ID/Designator	Agency/Location	24 Hr. #
CH342	Walla Walla County Fire District 4	509 540-4550
IMT Trailer	College Place Fire Department	509 529-6506

Auxiliary Communications (AUXCOMM) Frequencies

Ch Config	Name	Primary Use	Frequency		Tone
			Rx	Tx	Rx/Tx
2M	ARES	Emergency Communications	146.9600	146.3600	74.4
2M	ARES Backup	Emergency Communications	147.1400	147.4700	94.8
70cm	ARES Backup	Emergency Communications	443.4500	448.4500	123.0
70cm/GMRS	GMRS	Emergency Communications	462.6750	467.6750	141.3
2M	W2W2	WINLINK – Packet Gateway	145.5300	145.5300	CSQ
2M	W2W	WINLINK – Packet Gateway	145.0700	145.0700	CSQ
2M	Pikes Peak	Linked into KBARA System	147.2800	147.8800	103.5

Interoperable Channels Frequencies

VHF/UHF Interoperable Infrastructure

Name	Primary Use	Frequency			
		Rx	RX Tone	Tx	Tx Tone
VTAC33	Deployable Portable Repeater	159.4725	156.7	151.1375	136.5
VTAC36	Deployable Portable Repeater	151.1375	156.7	159.4725	136.5
VTAC38	Weston Mountain – Patch to Umatilla Co 700MHz	159.4725	156.7	159.7375	136.5
LERN	Law Enforcement Mutual Aid	155.3700	CSQ	155.3700	100.0
REDNET	Fire/EMS Mutual Aid	153.8300	CSQ	153.8300	156.7
VMED29	Medevac Air to Ground	155.3475	156.7	155.3475	156.7
HEAR	Providence St. Mary Medical Center	155.3400	146.2	155.3400	156.7

700/800 MHz Interoperable Infrastructure

Name	Primary Use/Locations	Frequency			
		Rx	RX Tone	Tx	Tx Tone
VTAC38	Weston Mountain, OR – Patch to Umatilla Co 700MHz	159.4725	156.7	159.7375	136.5
8TAC93	Washington State Penitentiary – Walla Walla	852.5125	156.7	807.5125	156.7

Whatcom County

Agency:	WHATCOMM and PROSPECT
Contact Name:	Bill Hanes
Title:	Communications Electronics Manager
Address:	2221 Pacific Street Bellingham, WA 98225
Office Phone:	360 778-7822
24/7 Phone:	564-213-6132
E-Mail:	whanes@cob.org

Agency:	Whatcom County Sheriff’s Office Division of Emergency Management (WCSO DEM)
Contact Name:	Robert Greene
Title:	Whatcom County Public Safety Communications Manager
Address:	3888 Sound Way Bellingham, WA 98226
Office Phone:	360 778-7166
24/7 Phone:	360 821-2804
E-Mail:	rgreene@co.whatcom.wa.us

Local Dispatch Centers/Emergency Management

Agency	Location	24 Hour #
WHATCOMM (Law)	620 Alabama St Bellingham, WA 98225	360 676-6911
PROSPECT (Fire)	1800 Broadway Ave Bellingham, WA 98225	360 676-6814
Whatcom County EOC	3888 Sound Way Bellingham WA 98226	360 676-6814 Ask to page DEM duty officer

Shared Systems

System Name	Agency	Freq	24 Hr. #
WCSO Channel 1 and 2 Simulcast	WCSO/WHATCOMM	UHF	360 676-6911/ 564 213-6132/ 360 821-2804
Bellingham Simulcast	Bellingham/WHATCOMM	UHF	360 676-6911/564 565-0480
FARS Simulcast	FARS	VHF	360 676-6814/360 676-8080

Gateways*Fixed Gateways*

Name/Gateway Type	24 Hr. #	Agency
WHATCOMM and PROSPECT/AVTEC	564-545-0480	WHATCOMM and PROSPECT

Transportable/Mobile Gateways

Name/Gateway Type	24 Hr. #	Agency
WCSO DEM/ACU-1000	360 821-2804	WCSO DEM

Repeaters*Fixed Repeaters*

Name/Agency	24 Hr. #	Frequency			
		Rx	Rx Tone	Tx	Tx Tone
WCSO Crossband Sumas/ WCSO	360 821-2804	UHF and VHF		UHF and VHF	
WCSO Crossband Lookout/ WCSO	360 821-2804	UHF and VHF		UHF and VHF	
WCSO Crossband CBP/ WCSO	360 821-2804	UHF and VHF		UHF and VHF	

Radio Cache

Name/Agency	24 Hr. #	Make/Mode (Qty)	Band
City of Bellingham	564-565-0480	Kenwood NX 5400 K2 (20)	700/800
WCSO DEM	360 821-2804	Kenwood NX 5400 K2 (10)	700/800
WCSO DEM	360 821-2804	Multiple models (10)	UHF/VHF

Mobile Communications Units (MCU)

Unit ID/Designator	Agency/Location	24 Hr. #
W7CSO/ Communications Van	WCSO DEM	360 821-2804
W7JIM/ Communications Van	WCSO SAR	360 676-6911
W7BPD/ Communications Van	WCSO DEM	360 821-2804

Auxiliary Communications (AUXCOMM) Frequencies

Ch Config	Name	Primary Use	Frequency		Tone
			Rx	Tx	Rx/Tx
2 MTR	SUMASV	County Primary Emergency Net	145.2300	144.6300	103.5
70CM	MTCONU	County Backup	444.0500	449.0500	103.5
70CM	CULTSU	OPS 1, DMCC Primary	444.6250	449.6250	103.5
70CM	LKOUTU	OPS 1, WECG Secondary	442.2500	447.2500	156.7
70CM	CHRCHU	WECG Primary	442.8250	447.8250	156.7
70CM	SEHOMU	Bellingham Primary	442.3000	447.3000	none
70CM	SVRPTR	Sudden Valley Primary	442.7500	447.7500	103.5
70CM	BLAINU	Blaine Repeater Primary	440.3750	445.3750	107.2
2 MTR	KINGV	King Mt repeater	147.1600	147.7600	103.5
2 MTR	MTCONV	Mt Constitution VHF repeater	146.7400	146.1400	103.5

Interoperable Channels Frequencies

VHF/UHF Interoperable Infrastructure

Name	Primary Use	Frequency			
		Rx	RX Tone	Tx	Tx Tone
V-CANAM	Mutual Aid with Canada	VHF		VHF	
V-LERN	Mutual Aid	VHF		VHF	

700/800 MHz Interoperable Infrastructure

Name	Primary Use/Locations	Frequency			
		Rx	RX Tone	Tx	Tx Tone
COB 800 NEXEDGE system	Command and Control	800MHz			
8CALL 90	Mutual Aid (Repeater on King Mt)	800MHz			
8TAC 94	Mutual Aid (Repeater on Sehome Hill)	800MHz			
7TAC 71	Mutual Aid (Repeater on Mt Constitution)	700MHz			
7TAC 72	Mutual Aid (Repeater on Sumas Mt)	700MHz			

Whitman County

Agency:	Whitman County Emergency Management
Contact Name:	Bill Tensfeld
Title:	Emergency Manager
Address:	310 N Main St, Colfax, WA 99111
Office Phone:	509 397-5605
24/7 Phone:	509 288-1188
E-Mail:	Bill.tensfeld@whitmancounty.gov

Local Dispatch Centers/Emergency Management

Agency	Location	24 Hour #
Whitcom 911	2325 NE Hopkins Ct, Pullman, WA 99163	509 332-2521
Whitman Co Emergency Management	310 N Main St, Colfax, WA 99111	509 288-1188

Non-Government Contact Information

Agency	24 Hr. #
American Red Cross	833-583-3111

Gateways

Transportable/Mobile Gateways

Name/Gateway Type	24 Hr. #	Agency
ACU-1000	509 288-1188	Whitman County Emergency Management

Radio Cache

Name/Agency	24 Hr. #	Make/Mode (Qty)	Band
Whitman County Emergency Management	509 288-1188	DPHX5102X (24)	VHF

Mobile Communications Units (MCU)

Unit ID/Designator	Agency/Location	24 Hr. #
EM Trailer	Whitman County EM/310 N Main St, Colfax, WA 99111	509 288-1188

Yakima County

Agency:	SunComm
Contact Name:	Erica McNamara
Title:	Public Safety Communications Manager
Address:	2403 S 18 th Street #400, Union Gap, WA 98903
Office Phone:	509 576-6340
24/7 Phone:	509 575-3015
E-Mail:	Erica.mcnamara@yakimawa.gov

Agency:	Yakima County Sheriff's Office Dispatch
Contact Name:	CarriAnn Ross
Title:	Chief Civil Deputy
Address:	
Office Phone:	509 574-2545
24/7 Phone:	
E-Mail:	Carriann.ross@co.yakima.wa.us

Agency:	Yakima County Office of Emergency Management
Contact Name:	Tony Miller
Title:	Director of Emergency Management
Address:	2403 S 18 th Street #400, Union Gap, WA 98903
Office Phone:	509 574-2155 office
24/7 Phone:	509 833-9474 cell
E-Mail:	Antone.Miller@co.yakima.wa.us

Local Dispatch Centers/Emergency Management

Agency	Location	24 Hour #
SunComm	2403 S 18 th Street #400, Union Gap, WA 98903	
YCSO-Yakima Co Sheriff's Office	1822 S 1 st St, Yakima, WA 98903	509 574-2500 ext 0
Emergency Management		
Fire District #5	720 1 st Ave, Zillah, WA 98953	509 865-4202
Grandview Police Department		
Sunnyside Police Department		
WSP - Yakima	2715 Rudkin Road, Union Gap, WA 98903	509 249-6700

Repeaters

Fixed Repeaters

Name/Agency	24 Hr. #	Frequency			
		Rx	Rx Tone	Tx	Tx Tone
YPD MAIN/City of Yakima		156.0150	103.5	158.7300	103.5
YPD DATA/City of Yakima		156.2100	103.5	155.2500	103.5
YFD CITY MAIN/City of Yakima		154.3100	103.5	154.0100	103.5
YFD CITY OPS/City of Yakima		154.4300	103.5	158.7450	103.5
YCSO Eagle/Yakima County Sheriff		155.5350	D054N	159.0900	D051N
YCSO Naches /Yakima County Sheriff		153.9650	D054N	151.0925	D051N
YCSO Bethel/Yakima County Sheriff		155.7300	100.0	154.7100	110.9
YCSO Selah/Yakima County Sheriff		154.1375	100.0	159.0225	210.7
YCSO Elephant/Yakima County Sheriff		156.0000	D054N	158.9325	D051N
YCSO Lookout/Yakima County Sheriff		155.7600	D054N	155.1000	D051N
UV Fire Main/UV Fire Commissioners	509 865-4202	154.2575	91.5	158.9175	91.5
UV Fire Sedge/UV Fire Commissioners	509 865-4202	155.8050	103.5	154.3550	118.8
UV Fire Rattlesnake/UV Fire Commissioners	509 865-4202	155.8050	103.5	154.3550	131.8
UV Fire Bethel/UV Fire Commissioners	509 865-4202	155.8050	103.5	154.3550	D465N
LV Fire Main/Fire District 5	509 865-4202	155.0325	91.5	158.9775	91.5
West Ops/Fire District 5	509 865-4202	154.1150	77.0	159.2250	D223N
East Ops/Fire District 5	509 865-4202	155.8800	173.8	159.3900	D516N

Resources and Links

FirstNet Response Operations Group (ROG)

24/7/365 FirstNet Help Desk: 800-574-7000 firstnet.com

Foundation Account Number (FAN) will be needed for support

T-Mobile Emergency Response Team

Dedicated Support Line: 888-639-0020

GETS Users: 254-295-2220

Email: ERTRequests@T-Mobile.com

Verizon Response Team Nationwide

24/7/365 Support Line: 800-981-9885

<https://www.verizon.com/business/solutions/public-sector/public-safety/programs/verizon-frontline-crisis-response-team/>

CISA Incident Reporting Portal <https://www.cisa.gov/report>

This portal allows organizations to report:

- Cyber incidents (unauthorized access, disruption, data loss)
- Ransomware attacks
- Malware samples
- Software or ICS vulnerabilities
- Threat indicators and defensive measures

FCC Operations Center (FCCOC) 202-418-1122, - 2813 FAX

FCC Email FCCOPS@fcc.gov / FCCOPcenter@fcc.gov

FCC Radio Frequency Service Interference Complaint Portal <https://fccprod.service-now.com/psix-esix/>

The Information Technology Disaster Resource Center (ITDRC)

24/7 Activation Hotline: 866.217.5777, support@itdrc.org <https://www.itdrc.org/>

Cisco Crisis Response (formerly Tactical Operations)

Email: emergencyresponse@cisco.com 24x7 Hotline: 1-919-392-4646

<https://www.cisco.com/site/us/en/about/purpose/social-impact/cisco-crisis-response/incident-response.html>

Other Network Operations Centers (NOCs)

- **AT&T** (800 TEAM NOC) 1-800-832-6662
- **Frontier** 1-877-486-5667
- **ZiPLY** 800-800-5347, 888-488-0072
- **Down Detector** status for many networks <https://downdetector.com/>

Washington Amateur Radio Emergency Communications <http://www.wastateares.org/>

Amateur Radio Repeaters

- **Western Washington Amateur Relay Association (WWARA)**
<https://www.wwara.org/coordinations/coordination-data-files/>
- **Inland Amateur Coordination Council (IACC)** <https://www.iacc.online/?mm=repeaters>

Wildfire Maps

- <https://dnr.wa.gov/wildfire-resources/current-wildfire-incident-information>
- <https://inciweb.wildfire.gov/>

Watch Duty <https://app.watchduty.org/>

NOAA Weather Alert Subscriptions <https://www.weather.gov/enterprise/>

NOAA Tsunami Alerts <https://www.tsunami.gov/>

Space Weather Prediction Center <https://www.swpc.noaa.gov/communities/radio-communications>

USGS Earthquake Notification Service <https://earthquake.usgs.gov/ens/>

Pacific NW Seismic Network <https://pnsn.org/>

WSDOT Travel Center (Traffic) <https://wsdot.com/Travel/Real-time/Map/>

Live Air Traffic Control <https://www.liveatc.net/>

Flight Radar Live Air Traffic <https://www.flightradar24.com/>

FlightAware Flight Tracking <https://www.flightaware.com/live/>

Marine Traffic <https://www.marinetraffic.com/>

ICS Fillable Forms - <https://training.fema.gov/icsresource/icsforms.aspx>

CISA Safecom Resource Library <https://www.cisa.gov/safecom/safecom-resource-library>

National Interoperability Field Operations Guide (NIFOG)

https://www.cisa.gov/sites/default/files/2024-12/NIFOG%202.02_508%20FINAL%20VERSION%2012%2003%202024.pdf

Programming Template for Interoperability Radio Channels (ICS 217s)

<https://www.cisa.gov/sites/default/files/publications/Programming%2520Template%2520for%2520Interoperability%2520Radio%2520Channels%2520-%2520FINAL%252010142021.pdf>

National Emergency Communications Plan

https://www.cisa.gov/sites/default/files/publications/19_0924_CISA_ECD-NECP-2019_1.pdf

Auxiliary Communications Field Operations Guide (AUXFOG)

<https://www.cisa.gov/sites/default/files/publications/AUXFOG%2520June%25202016%2520-%2520508%2520Reviewed%2520-%2520Final%2520%25282-16-17%2529.pdf>

NIMS Information and Communications Technology Functional Guidance March 2023

https://www.fema.gov/sites/default/files/documents/fema_ict-functional-guidance.pdf

Washington Statewide Communications Interoperability Plan (SCIP)

https://mil.wa.gov/asset/67a697664a397/WA%20SCIP_Interim%20Updates_2024.pdf

Washington State Interoperability Executive Committee (SIEC)

<https://mil.wa.gov/state-interoperability-executive-committee-siec>

FCC Line A - <https://www.fcc.gov/engineering-technology/electromagnetic-compatibility-division/frequency-coordination-canada-below>

FEMA Plain Language Directive - https://www.fema.gov/pdf/emergency/nims/plain_lang.pdf

HHS Summary of HIPAA Privacy Rule - <https://www.hhs.gov/hipaa/for-professionals/privacy/laws-regulations/index.html>

FCC Rules - <https://www.fcc.gov/wireless/bureau-divisions/technologies-systems-and-innovation-division/rules-regulations-title-47>

Marine (part 80), **Land Mobile** (part 90), **MURS/FRS/GMRS** (part 95), **Amateur Radio** (part 97)

National Telecommunications and Information Administration (NTIA) - <https://www.ntia.doc.gov/>

Association of Public Safety Communications Officials (APCO) - <https://www.apcointl.org/>

SHARES - <https://www.cisa.gov/shared-resources-shares-high-frequency-hf-radio-program>

NAWAS in Washington State - <https://mil.wa.gov/national-warning-system>

FEMA Resource Typing Library - <https://rtlt.preptoolkit.fema.gov/Public>

